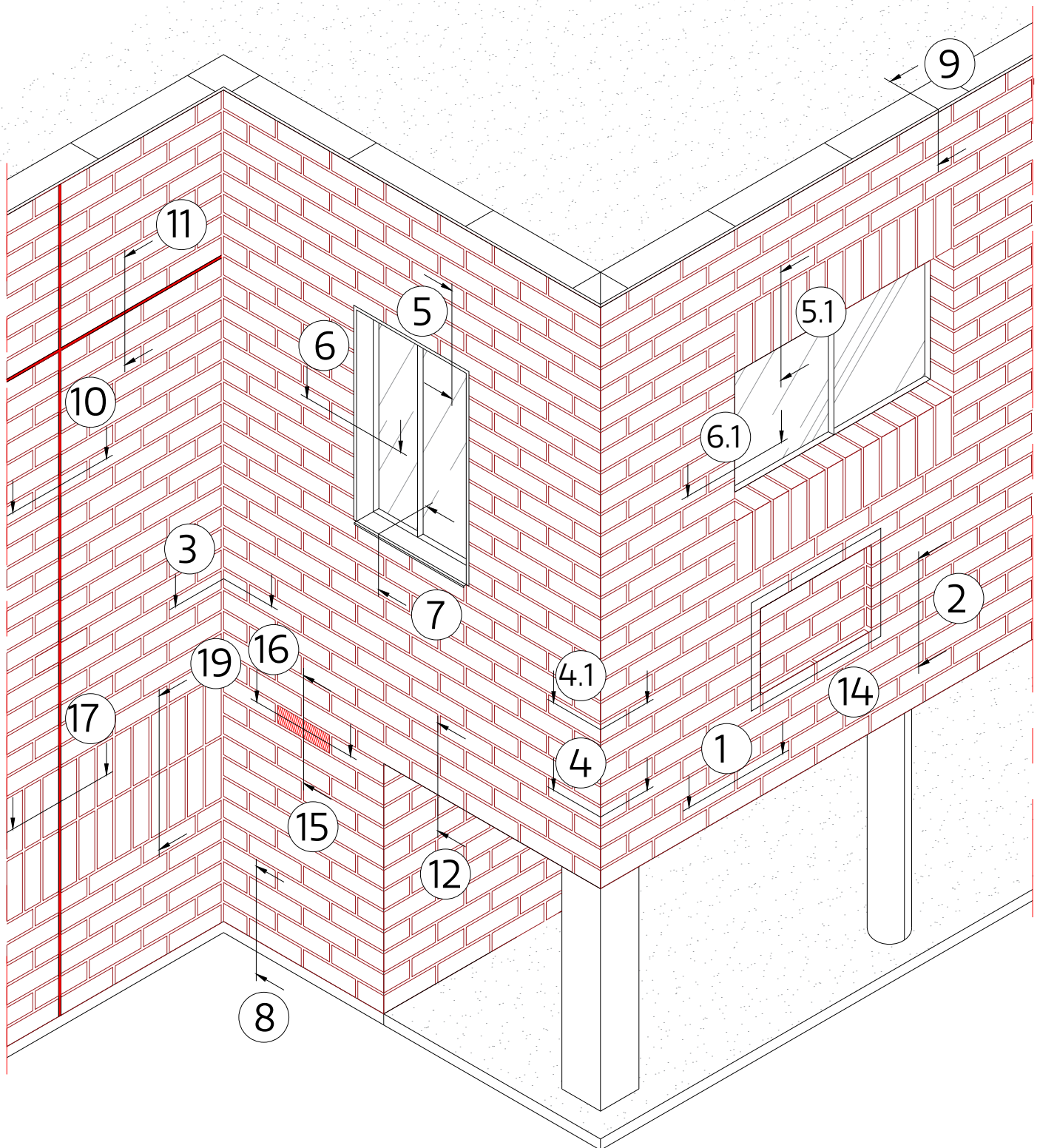


General Notes:

Do not scale this drawing - If in doubt contact the Technical Office.

It is the customers responsibility to ensure that Ash & Lacy products are correctly installed and that they are suitable for the customers particular requirement and application.

This drawing is copyright, reproduction or duplication of this drawing without the consent of Ash & Lacy is prohibited.



ASH & LACY

BROMFORD LANE
WEST BROMWICH
WEST MIDLANDS
B70 7JJ

TEL: 0121 525 1444

FAX: 0121 525 3444

WWW.ASHANDLACY.COM

Notes:

Rev	Description	Drawn	Check	Date
A	Add detail No 19	EJ	YT	19/04/2021
B	Update drawing box with new logo	EJ	YT	25/08/2020
C				
D				

Drawing Title:

Typical Details Key

Drawn By:
EJ

Checked By:
YT

Date:
04/06/2020

Scale: NTS @ A4



Drawing Status:

Information

Client:

Project:

NaturAL-X Typical Details

Drawing No:

TD.NX.H1.G-00.00

Rev:

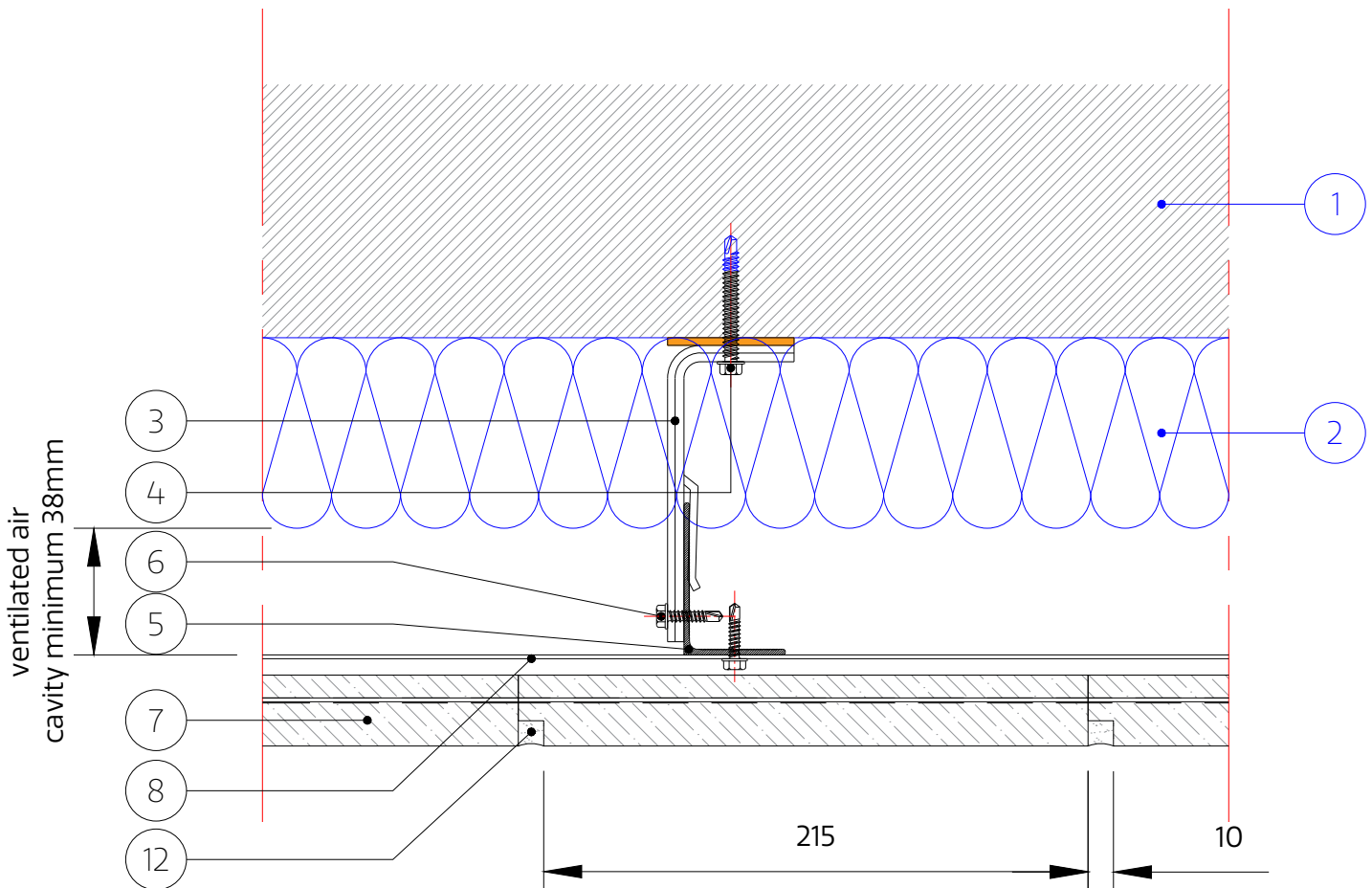
B

General Notes:

Do not scale this drawing - If in doubt contact the Technical Office.

It is the customers responsibility to ensure that Ash & Lacy products are correctly installed and that they are suitable for the customers particular requirement and application.

This drawing is copyright, reproduction or duplication of this drawing without the consent of Ash & Lacy is prohibited.



- | | | | |
|--|-------------------------------|----------------------------|--------------------------------|
| 1. Substrate (by others) | 7. NaturAL-X Brick Slip | 14. Aluminum Angle | 22. Stainless Steel Bracket |
| 2. Insulation (by others) | 8. Intermediate Brick Rail | 15. Cleat (to be site cut) | 23. Stainless Steel Mullion |
| 3. Bracket | 9. Brick Start Rail | 16. 'F' Trim Support | 24. Stainless Steel |
| 4. Bracket/Wall Fixing
(Depending on Substrate) | 10. Brick Top Rail | 17. Window Flashing | 25. Bracket/Mullion Fixing |
| 5. Mullion | 11. Horizontal Bracket | 18. Ventilated Section | 26. Stainless Steel Start Rail |
| 6. Support System/Brick Rail
Fixing | 12. Mortar Joint | 19. Vent Brick Slip | 27. Aluminum Brick Slip |
| | 13. Sealant on back-up filler | 20. Coping to suit project | 28. Bird Beak Flashing |
| | | 21. Damp Proof Course | |

Note: All fixings, insulation and membranes indicated are for guidance only and need to be checked for each individual project

ASH & LACY

BROMFORD LANE
WEST BROMWICH
WEST MIDLANDS
B70 7JJ

TEL: 0121 525 1444

FAX: 0121 525 3444

WWW.ASHANDLACY.COM

Notes:

Rev	Description	Drawn	Check	Date
A	Update drawing box with new logo, amend element descriptions	EJ	YT	25/08/2021
B				
C				
D				

Drawing Title:

Vertical Joint

Drawn By:

EJ

Checked By:

YT

Date:

04/06/2020

Scale: NTS @ A4



Drawing Status:

Information

Client:

Project:

NaturAL-X Typical Details

Drawing No:

TD.NX.H1.G-01.00

Rev:

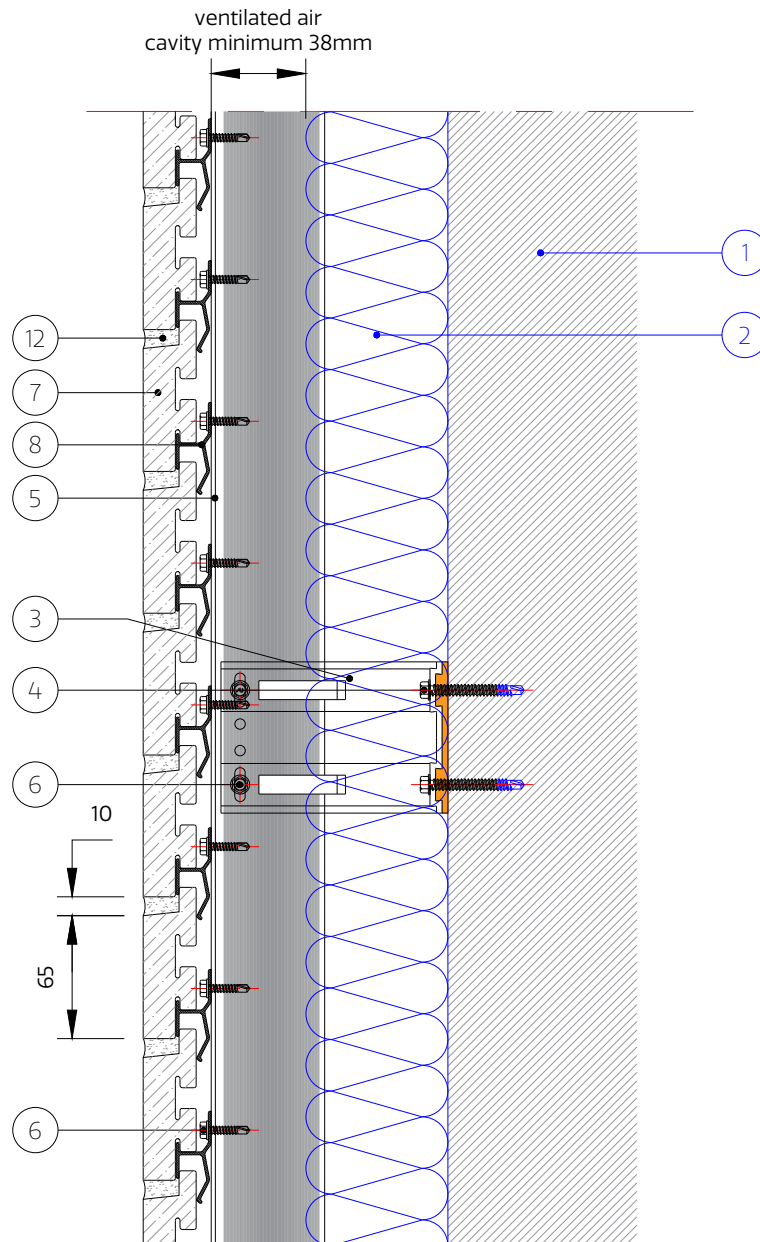
A

General Notes:

Do not scale this drawing - If in doubt contact the Technical Office.

It is the customers responsibility to ensure that Ash & Lacy products are correctly installed and that they are suitable for the customers particular requirement and application.

This drawing is copyright, reproduction or duplication of this drawing without the consent of Ash & Lacy is prohibited.



- | | | | |
|--|-----------------------------------|----------------------------|--------------------------------|
| 1. Substrate (by others) | 7. NaturAL-X Brick Slip | 14. Aluminum Angle | 22. Stainless Steel Bracket |
| 2. Insulation (by others) | 8. Intermediate Brick Rail | 15. Cleat (to be site cut) | 23. Stainless Steel Mullion |
| 3. Bracket | 9. Brick Start Rail | 16. 'F' Trim Support | 24. Stainless Steel |
| 4. Bracket/Wall Fixing
(Depending on Substrate) | 10. Brick Top Rail | 17. Window Flashing | 25. Bracket/Mullion Fixing |
| 5. Mullion | 11. Horizontal Bracket
Adaptor | 18. Ventilated Section | 26. Stainless Steel Start Rail |
| 6. Support System/Brick Rail
Fixing | 12. Mortar Joint | 19. Vent Brick Slip | 27. Aluminum Brick Slip |
| | 13. Sealant on back-up filler | 20. Coping to suit project | 28. Bird Beak Flashing |
| | | 21. Damp Proof Course | |

Note: All fixings, insulation and membranes indicated are for guidance only and need to be checked for each individual project

ASH & LACY

BROMFORD LANE
WEST BROMWICH
WEST MIDLANDS
B70 7JJ

TEL: 0121 525 1444

FAX: 0121 525 3444

WWW.ASHANDLACY.COM

Notes:

Rev	Description	Drawn	Check	Date
A	Update drawing box with new logo, amend element descriptions	EJ	YT	25/08/2021
B				
C				
D				

Drawing Title:

Horizontal Joint

Drawn By:

EJ

Checked By:

YT

Date:

04/06/2020

Scale: 1:4 @ A4



Drawing Status:

Information

Client:

Project:

NaturAL-X Typical Details

Drawing No:

TD.NX.H1.G-02.00

Rev:

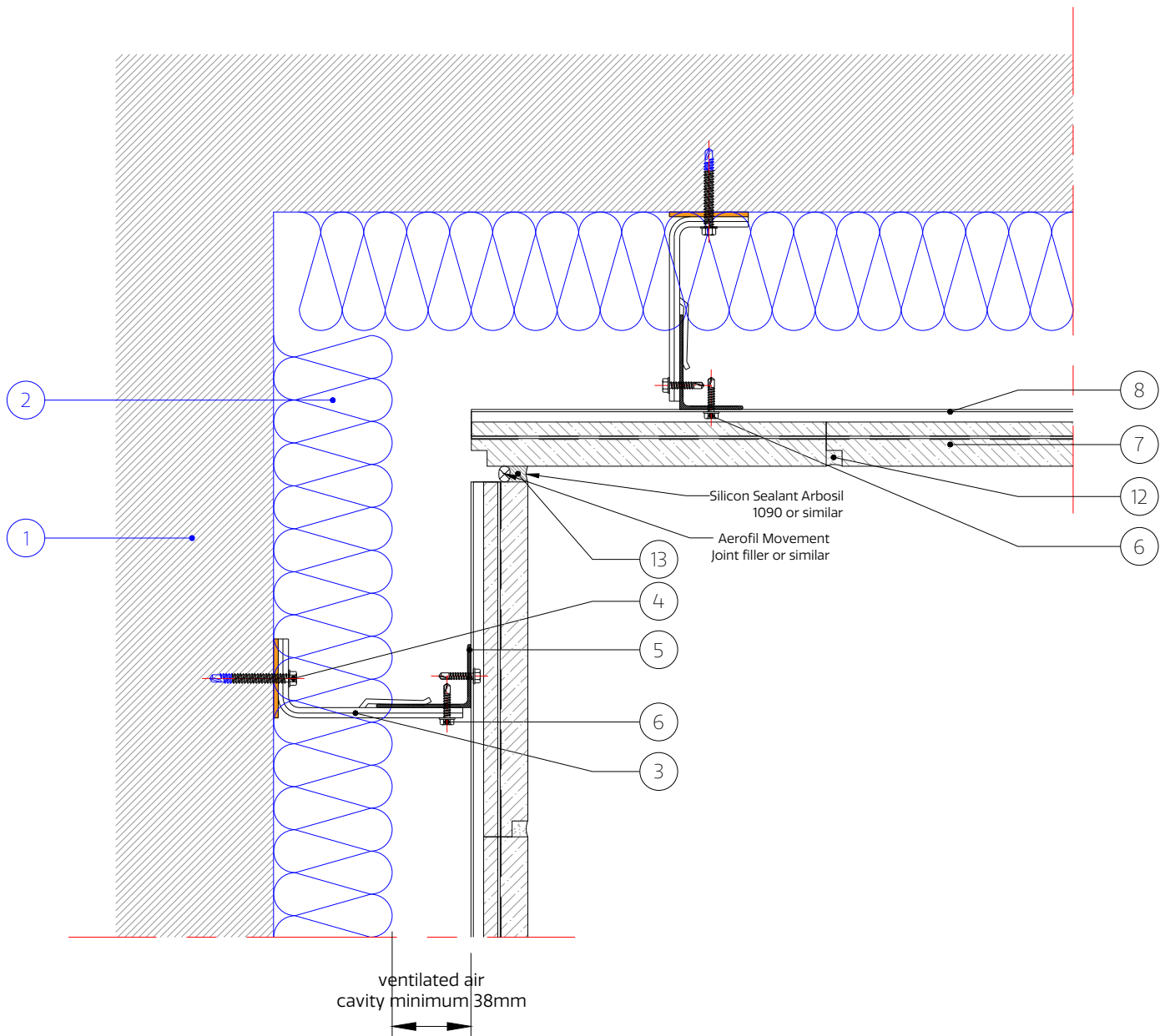
A

General Notes:

Do not scale this drawing - If in doubt contact the Technical Office.

It is the customers responsibility to ensure that Ash & Lacy products are correctly installed and that they are suitable for the customers particular requirement and application.

This drawing is copyright, reproduction or duplication of this drawing without the consent of Ash & Lacy is prohibited.



- | | | | |
|--|-----------------------------------|----------------------------|--------------------------------|
| 1. Substrate (by others) | 7. NaturAL-X Brick Slip | 14. Aluminum Angle | 22. Stainless Steel Bracket |
| 2. Insulation (by others) | 8. Intermediate Brick Rail | 15. Cleat (to be site cut) | 23. Stainless Steel Mullion |
| 3. Bracket | 9. Brick Start Rail | 16. 'F' Trim Support | 24. Stainless Steel |
| 4. Bracket/Wall Fixing
(Depending on Substrate) | 10. Brick Top Rail | 17. Window Flashing | 25. Bracket/Mullion Fixing |
| 5. Mullion | 11. Horizontal Bracket
Adaptor | 18. Ventilated Section | 26. Stainless Steel Start Rail |
| 6. Support System/Brick Rail
Fixing | 12. Mortar Joint | 19. Vent Brick Slip | 27. Stainless Steel Top Rail |
| | 13. Sealant on back-up filler | 20. Coping to suit project | 28. Aluminum Brick Slip |
| | | 21. Damp Proof Course | 29. Bird Beak Flashing |

Note: All fixings, insulation and membranes indicated are for guidance only and need to be checked for each individual project

ASH & LACY

BROMFORD LANE
WEST BROMWICH
WEST MIDLANDS
B70 7JJ

TEL: 0121 525 1444

FAX: 0121 525 3444

WWW.ASHANDLACY.COM

Notes:

Rev	Description	Drawn	Check	Date
A	Add recommendation for sealant and joint filler manufacturer	EJ	YT	19/04/2021
B	Update drawing box with new logo, amend element descriptions	EJ	YT	25/08/2021
C				

Drawing Title:

Internal Corner

Drawn By:

EJ

Checked By:

YT

Date:

04/06/2020

Scale:

1:4 @ A4



Drawing Status:

Information

Client:

Project:

NaturAL-X Typical Details

Drawing No:

TD.NX.H1.G-03.00

Rev:

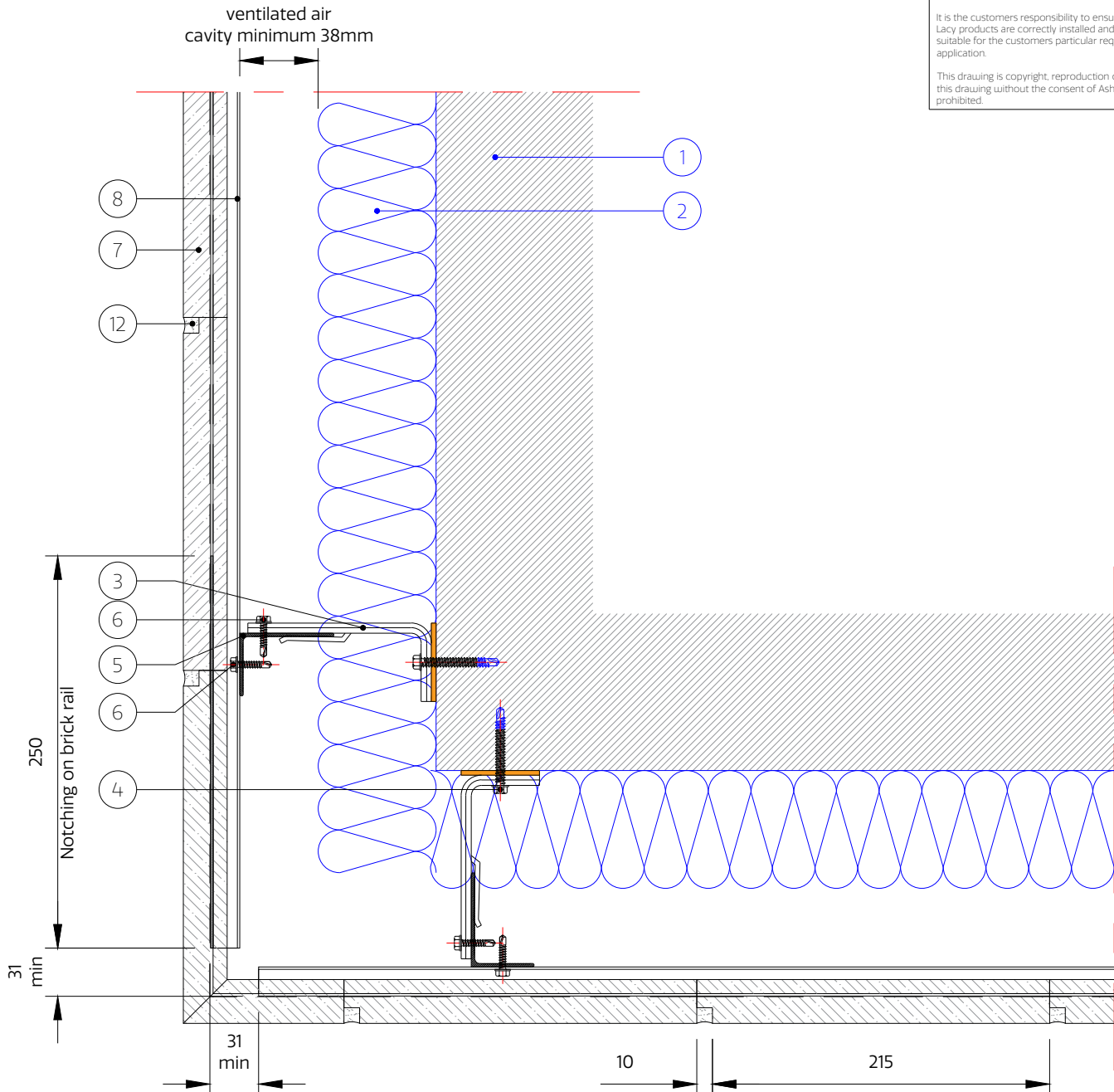
B

General Notes:

Do not scale this drawing - If in doubt contact the Technical Office.

It is the customers responsibility to ensure that Ash & Lacy products are correctly installed and that they are suitable for the customers particular requirement and application.

This drawing is copyright, reproduction or duplication of this drawing without the consent of Ash & Lacy is prohibited.



Note: Brick rails on one side of the corner must be notched to allow easy brick slip installation

- | | | | |
|--|-------------------------------|----------------------------|--------------------------------|
| 1. Substrate (by others) | 7. NaturAL-X Brick Slip | 14. Aluminum Angle | 22. Stainless Steel Bracket |
| 2. Insulation (by others) | 8. Intermediate Brick Rail | 15. Cleat (to be site cut) | 23. Stainless Steel Mullion |
| 3. Bracket | 9. Brick Start Rail | 16. 'F' Trim Support | 24. Stainless Steel |
| 4. Bracket/Wall Fixing
(Depending on Substrate) | 10. Brick Top Rail | 17. Window Flashing | 25. Bracket/Mullion Fixing |
| 5. Mullion | 11. Horizontal Bracket | 18. Ventilated Section | 26. Stainless Steel Start Rail |
| 6. Support System/Brick Rail
Fixing | 12. Mortar Joint | 19. Vent Brick Slip | 27. Stainless Steel Top Rail |
| | 13. Sealant on back-up filler | 20. Coping to suit project | 28. Aluminum Brick Slip |
| | | 21. Damp Proof Course | 29. Bird Beak Flashing |

Note: All fixings, insulation and membranes indicated are for guidance only and need to be checked for each individual project

ASH & LACY

BROMFORD LANE
WEST BROMWICH
WEST MIDLANDS
B70 7JJ

TEL: 0121 525 1444

FAX: 0121 525 3444

WWW.ASHANDLACY.COM

Notes:

Rev	Description	Drawn	Check	Date
A	Update drawing box with new logo, amend element descriptions, add note about notched rails	EJ	YT	25/08/2021
B				
C				
D				

Drawing Title:

External Corner
Cavity Up To 150mm

Drawn By:

EJ

Checked By:

YT

Date:

04/06/2020

Scale: 1:4 @ A4



Drawing Status:

Information

Client:

Project:

NaturAL-X Typical Details

Drawing No:

TD.NX.H1.G-04.00

Rev:

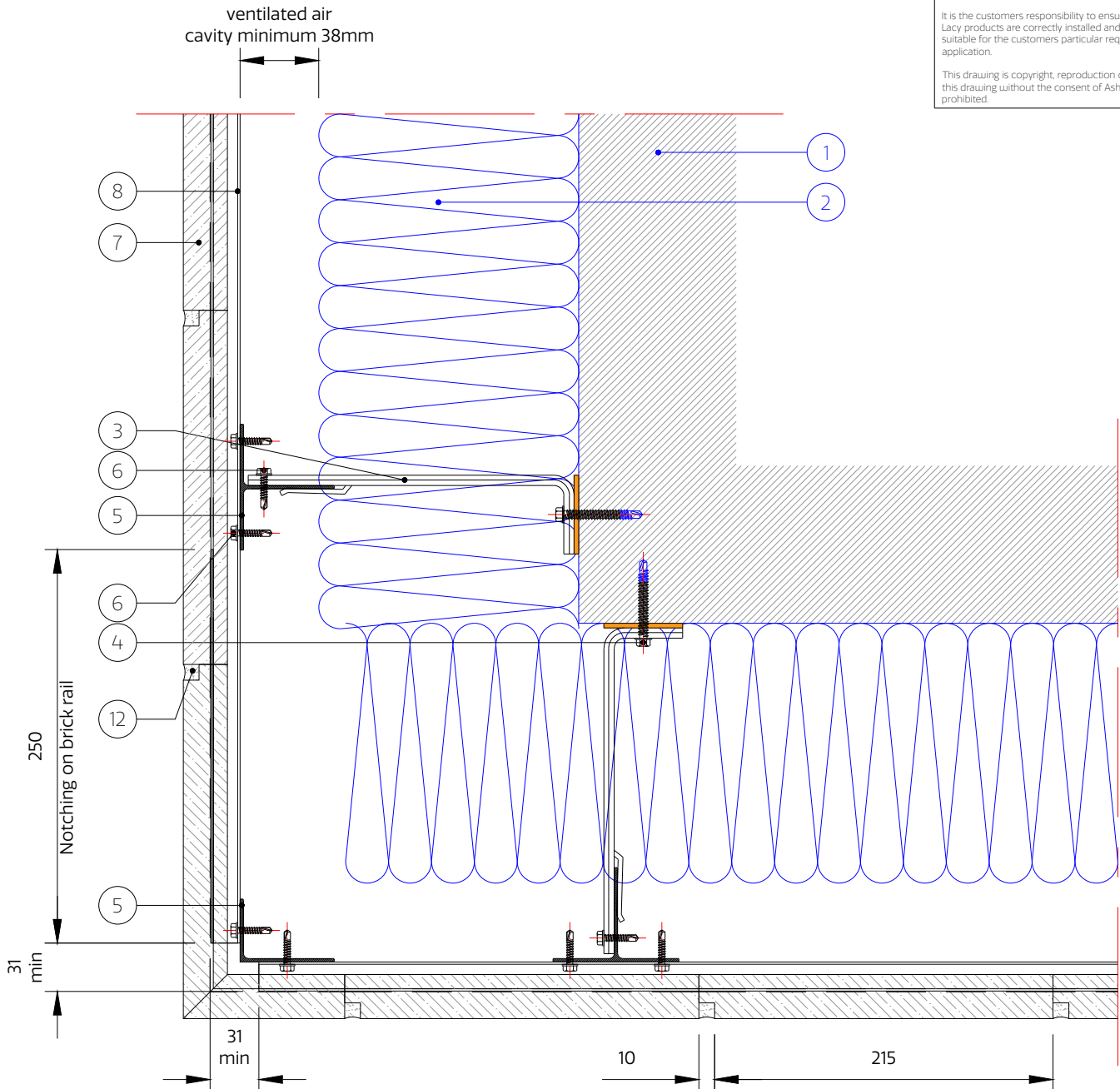
A

General Notes:

Do not scale this drawing - If in doubt contact the Technical Office.

It is the customers responsibility to ensure that Ash & Lacy products are correctly installed and that they are suitable for the customers particular requirement and application.

This drawing is copyright, reproduction or duplication of this drawing without the consent of Ash & Lacy is prohibited.



Note: Brick rails on one side of the corner must be notched to allow easy brick slip installation

- | | | | |
|--|-----------------------------------|----------------------------|--------------------------------|
| 1. Substrate (by others) | 7. NaturAL-X Brick Slip | 14. Aluminum Angle | 22. Stainless Steel Bracket |
| 2. Insulation (by others) | 8. Intermediate Brick Rail | 15. Cleat (to be site cut) | 23. Stainless Steel Mullion |
| 3. Bracket | 9. Brick Start Rail | 16. 'F' Trim Support | 24. Stainless Steel |
| 4. Bracket/Wall Fixing
(Depending on Substrate) | 10. Brick Top Rail | 17. Window Flashing | Bracket/Mullion Fixing |
| 5. Mullion | 11. Horizontal Bracket
Adaptor | 18. Ventilated Section | 25. Stainless Steel Start Rail |
| 6. Support System/Brick Rail
Fixing | 12. Mortar Joint | 19. Vent Brick Slip | 26. Stainless Steel Top Rail |
| | 13. Sealant on back-up filler | 20. Coping to suit project | 27. Aluminum Brick Slip |
| | | 21. Damp Proof Course | 28. Bird Beak Flashing |

Note: All fixings, insulation and membranes indicated are for guidance only and need to be checked for each individual project

ASH & LACY

BROMFORD LANE
WEST BROMWICH
WEST MIDLANDS
B70 7JJ

TEL: 0121 525 1444

FAX: 0121 525 3444

WWW.ASHANDLACY.COM

Notes:

Rev	Description	Drawn	Check	Date
A	Update drawing box with new logo, amend element descriptions, add note about notched rails	EJ	YT	25/08/2021
B				
C				
D				

Drawing Title:

External Corner
Cavity From 150mm To 330mm

Drawn By:

EJ

Checked By:

YT

Date:

04/06/2020

Scale:

1:4

@

A4

Drawing Status:

Information

Client:

Project:

NaturAL-X Typical Details

Drawing No:

TD.NX.H1.G-04.01

Rev:

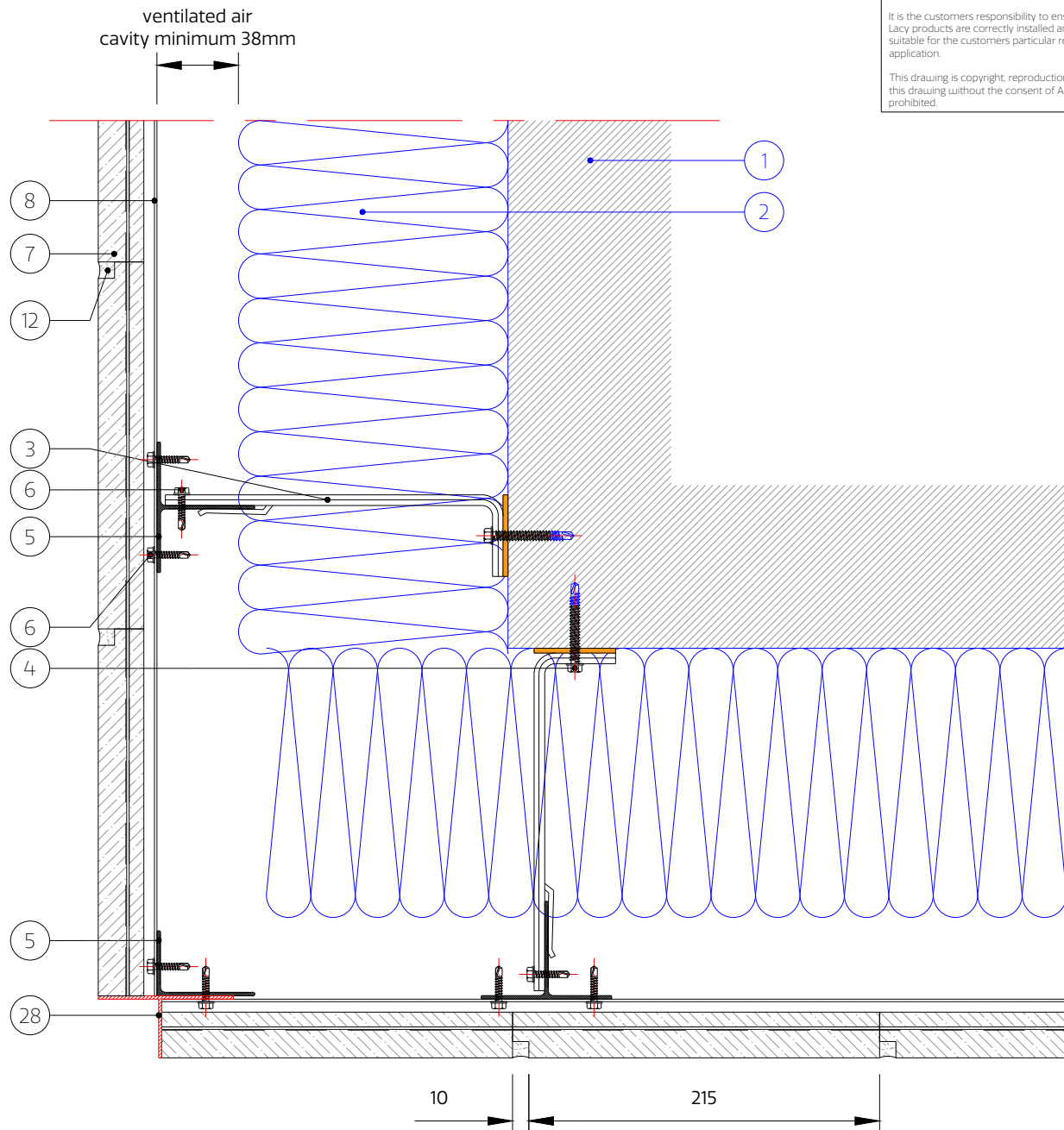
A

General Notes:

Do not scale this drawing - If in doubt contact the Technical Office.

It is the customers responsibility to ensure that Ash & Lacy products are correctly installed and that they are suitable for the customers particular requirement and application.

This drawing is copyright, reproduction or duplication of this drawing without the consent of Ash & Lacy is prohibited.



- | | | | |
|--|-------------------------------|----------------------------|--------------------------------|
| 1. Substrate (by others) | 7. NaturAL-X Brick Slip | 14. Aluminum Angle | 22. Stainless Steel Bracket |
| 2. Insulation (by others) | 8. Intermediate Brick Rail | 15. Cleat (to be site cut) | 23. Stainless Steel Mullion |
| 3. Bracket | 9. Brick Start Rail | 16. 'F' Trim Support | 24. Stainless Steel |
| 4. Bracket/Wall Fixing
(Depending on Substrate) | 10. Brick Top Rail | 17. Window Flashing | Bracket/Mullion Fixing |
| 5. Mullion | 11. Horizontal Bracket | 18. Ventilated Section | 25. Stainless Steel Start Rail |
| 6. Support System/Brick Rail | Adaptor | 19. Vent Brick Slip | 26. Stainless Steel Top Rail |
| Fixing | 12. Mortar Joint | 20. Coping to suit project | 27. Aluminum Brick Slip |
| | 13. Sealant on back-up filler | 21. Damp Proof Course | 28. Bird Beak Flashing |

Note: All fixings, insulation and membranes indicated are for guidance only and need to be checked for each individual project

ASH & LACY

BROMFORD LANE
WEST BROMWICH
WEST MIDLANDS
B70 7JJ

TEL: 0121 525 1444

FAX: 0121 525 3444

WWW.ASHANDLACY.COM

Notes:

Rev	Description	Drawn	Check	Date
A				
B				
C				
D				

Drawing Title:

External Corner
Bird Beak Flashing

Drawn By:

EJ

Checked By:

YT

Date:

25/08/2021

Scale: 1:4 @ A4



Drawing Status:

Information

Client:

Project:

NaturAL-X Typical Details

Drawing No:

TD.NX.H1.G-04.02

Rev:

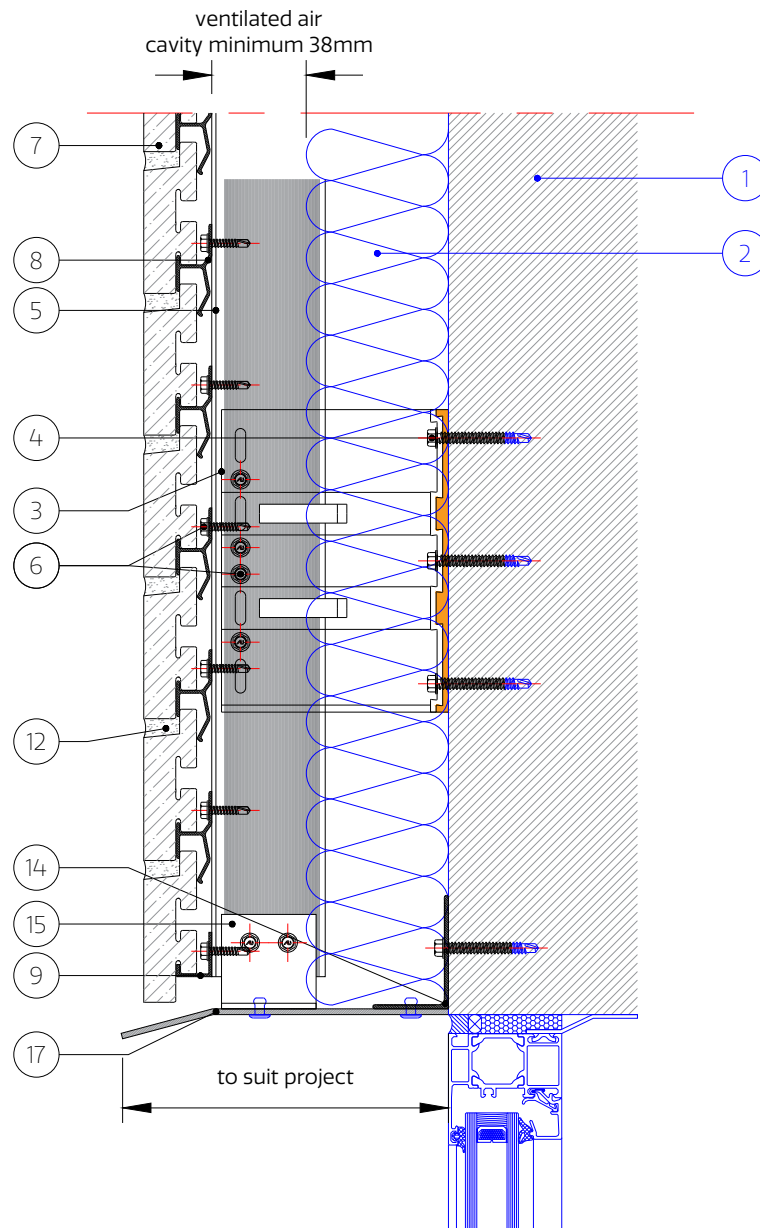
[-]

General Notes

Do not scale this drawing - If in doubt contact the Technical Office.

It is the customers responsibility to ensure that Ash & Lacy products are correctly installed and that they are suitable for the customers particular requirement and application.

This drawing is copyright, reproduction or duplication of this drawing without the consent of Ash & Lacy is prohibited.



- | | | | |
|--|-------------------------------|----------------------------|--------------------------------|
| 1. Substrate (by others) | 7. NaturAL-X Brick Slip | 14. Aluminum Angle | 22. Stainless Steel Bracket |
| 2. Insulation (by others) | 8. Intermediate Brick Rail | 15. Cleat (to be site cut) | 23. Stainless Steel Mullion |
| 3. Bracket | 9. Brick Start Rail | 16. 'F' Trim Support | 24. Stainless Steel |
| 4. Bracket/Wall Fixing
(Depending on Substrate) | 10. Brick Top Rail | 17. Window Flashing | 25. Bracket/Mullion Fixing |
| 5. Mullion | 11. Horizontal Bracket | 18. Ventilated Section | 26. Stainless Steel Start Rail |
| 6. Support System/Brick Rail | 12. Mortar Joint | 19. Vent Brick Slip | 27. Aluminum Brick Slip |
| | 13. Sealant on back-up filler | 20. Coping to suit project | 28. Bird Beak Flashing |
| | | 21. Damp Proof Course | |

Note: All fixings, insulation and membranes indicated are for guidance only and need to be checked for each individual project

ASH & LACY

BROMFORD LANE
WEST BROMWICH
WEST MIDLANDS
B70 7JJ
TEL: 0121 525 1444
FAX: 0121 525 3444
WWW.ASHANDLACY.COM

Notes:

Rev	Description	Drawn	Check	Date
A	Flashing fixed to substrate not to window frame	EJ	YT	19/04/2021
B	Update drawing box with new logo, amend element descriptions	EJ	YT	25/08/2021
C				

Drawing Title:

Window Head
Metal Head Flashing

Drawn By:

EJ

Checked By:

YT

Date:

04/06/2020

Scale: 1:4 @ A4



Drawing Status:

Information

Client:

Project:

NaturAL-X Typical Details

Drawing No:

TD.NX.H1.G-05.00

Rev:

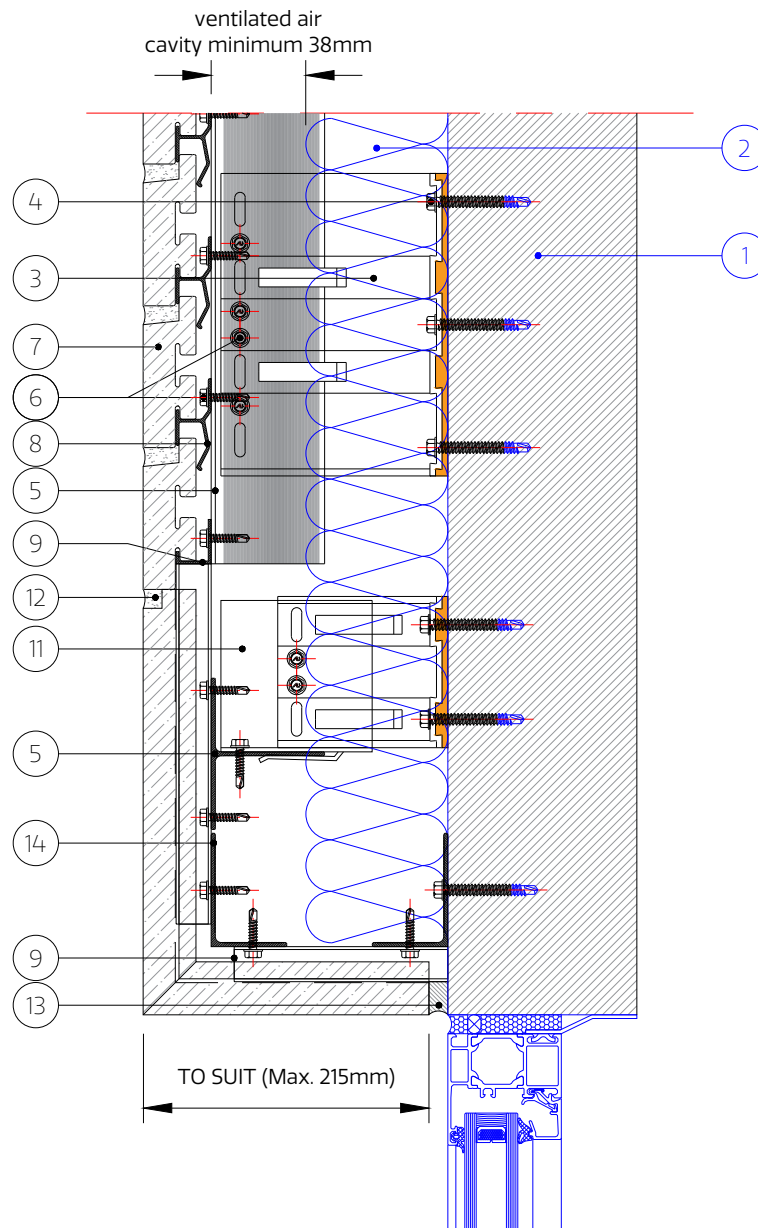
B

General Notes:

Do not scale this drawing - If in doubt contact the Technical Office.

It is the customers responsibility to ensure that Ash & Lacy products are correctly installed and that they are suitable for the customers particular requirement and application.

This drawing is copyright, reproduction or duplication of this drawing without the consent of Ash & Lacy is prohibited.



Note: Brick rails for window head brick slips must be installed from left to right (Brick Start Rail on the left, Brick Top Rail - on the right).

On soffit part of window head details brick start rails must be used instead of intermediate rail.

- | | | | |
|--|-----------------------------------|----------------------------|--------------------------------|
| 1. Substrate (by others) | 7. NaturAL-X Brick Slip | 14. Aluminum Angle | 22. Stainless Steel Bracket |
| 2. Insulation (by others) | 8. Intermediate Brick Rail | 15. Cleat (to be site cut) | 23. Stainless Steel Mullion |
| 3. Bracket | 9. Brick Start Rail | 16. 'F' Trim Support | 24. Stainless Steel |
| 4. Bracket/Wall Fixing
(Depending on Substrate) | 10. Brick Top Rail | 17. Window Flashing | Bracket/Mullion Fixing |
| 5. Mullion | 11. Horizontal Bracket
Adaptor | 18. Ventilated Section | 25. Stainless Steel Start Rail |
| 6. Support System/Brick Rail
Fixing | 12. Mortar Joint | 19. Vent Brick Slip | 26. Stainless Steel Top Rail |
| | 13. Sealant on back-up filler | 20. Coping to suit project | 27. Aluminum Brick Slip |
| | | 21. Damp Proof Course | 28. Bird Beak Flashing |

Note: All fixings, insulation and membranes indicated are for guidance only and need to be checked for each individual project

ASH & LACY

BROMFORD LANE
WEST BROMWICH
WEST MIDLANDS
B70 7JJ

TEL: 0121 525 1444

FAX: 0121 525 3444

WWW.ASHANDLACY.COM

Notes:

Rev	Description	Drawn	Check	Date
A	Update drawing box with new logo, amend element descriptions	EJ	YT	25/08/2021
B				
C				
D				

Drawing Title:

Window Head
Soldier Bond Brick Return
Option 1

Drawn By:

EJ

Checked By:

YT

Date:

04/06/2020

Scale: 1:4 @ A4



Drawing Status:

Information

Client:

Project:

NaturAL-X Typical Details

Drawing No:

TD.NX.H1.G-05.01

Rev:

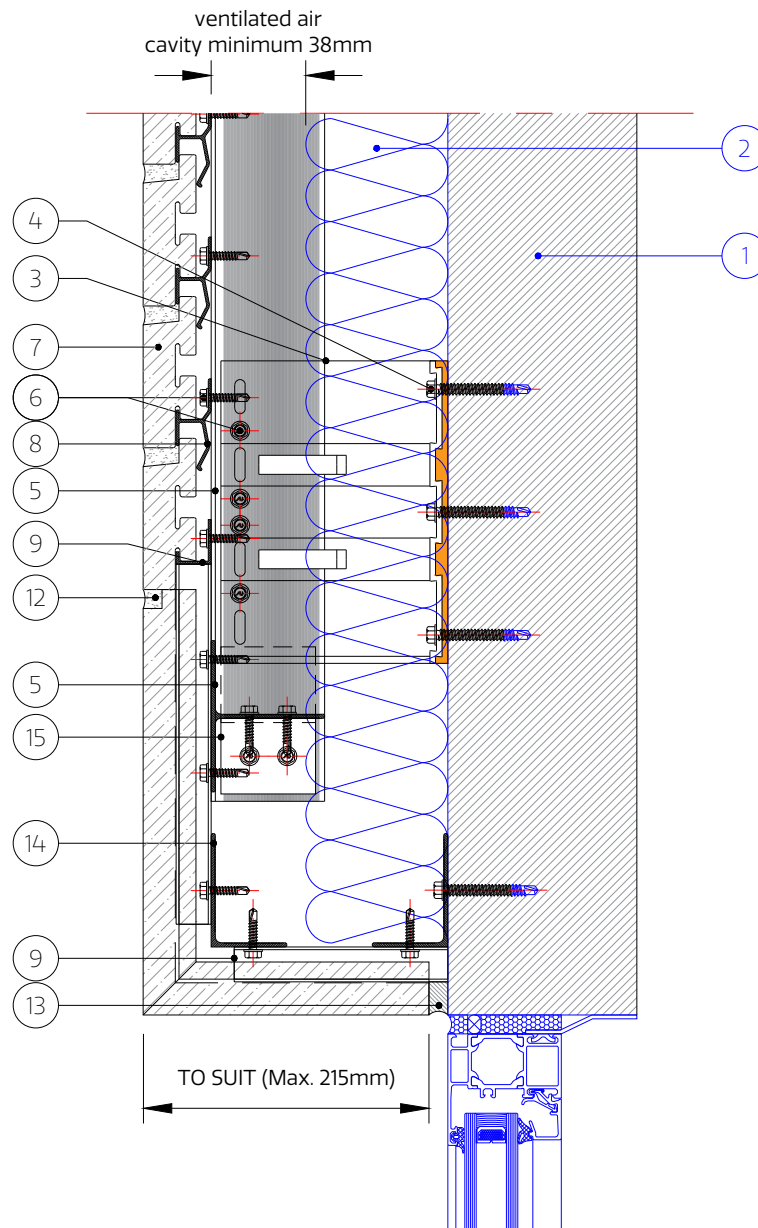
A

General Notes:

Do not scale this drawing - If in doubt contact the Technical Office.

It is the customers responsibility to ensure that Ash & Lacy products are correctly installed and that they are suitable for the customers particular requirement and application.

This drawing is copyright, reproduction or duplication of this drawing without the consent of Ash & Lacy is prohibited.



Note: Brick rails for window head brick slips must be installed from left to right (Brick Start Rail on the left, Brick Top Rail - on the right).

On soffit part of window head details brick start rails must be used instead of intermediate rail.

- | | | | |
|--|-----------------------------------|----------------------------|--------------------------------|
| 1. Substrate (by others) | 7. NaturAL-X Brick Slip | 14. Aluminum Angle | 22. Stainless Steel Bracket |
| 2. Insulation (by others) | 8. Intermediate Brick Rail | 15. Cleat (to be site cut) | 23. Stainless Steel Mullion |
| 3. Bracket | 9. Brick Start Rail | 16. 'F' Trim Support | 24. Stainless Steel |
| 4. Bracket/Wall Fixing
(Depending on Substrate) | 10. Brick Top Rail | 17. Window Flashing | 25. Bracket/Mullion Fixing |
| 5. Mullion | 11. Horizontal Bracket
Adaptor | 18. Ventilated Section | 26. Stainless Steel Start Rail |
| 6. Support System/Brick Rail
Fixing | 12. Mortar Joint | 19. Vent Brick Slip | 27. Stainless Steel Top Rail |
| | 13. Sealant on back-up filler | 20. Coping to suit project | 28. Aluminum Brick Slip |
| | | 21. Damp Proof Course | |

Note: All fixings, insulation and membranes indicated are for guidance only and need to be checked for each individual project

ASH & LACY

BROMFORD LANE
WEST BROMWICH
WEST MIDLANDS
B70 7JJ

TEL: 0121 525 1444

FAX: 0121 525 3444

WWW.ASHANDLACY.COM

Notes:

Rev	Description	Drawn	Check	Date
A				
B				
C				
D				

Drawing Title:

Window Head
Soldier Bond Brick Return
Option 2

Drawn By:

EJ

Checked By:

YT

Date:

25/08/2021

Scale: 1:4 @ A4



Drawing Status:

Information

Client:

Project:

NaturAL-X Typical Details

Drawing No:

TD.NX.H1.G-05.02

Rev:

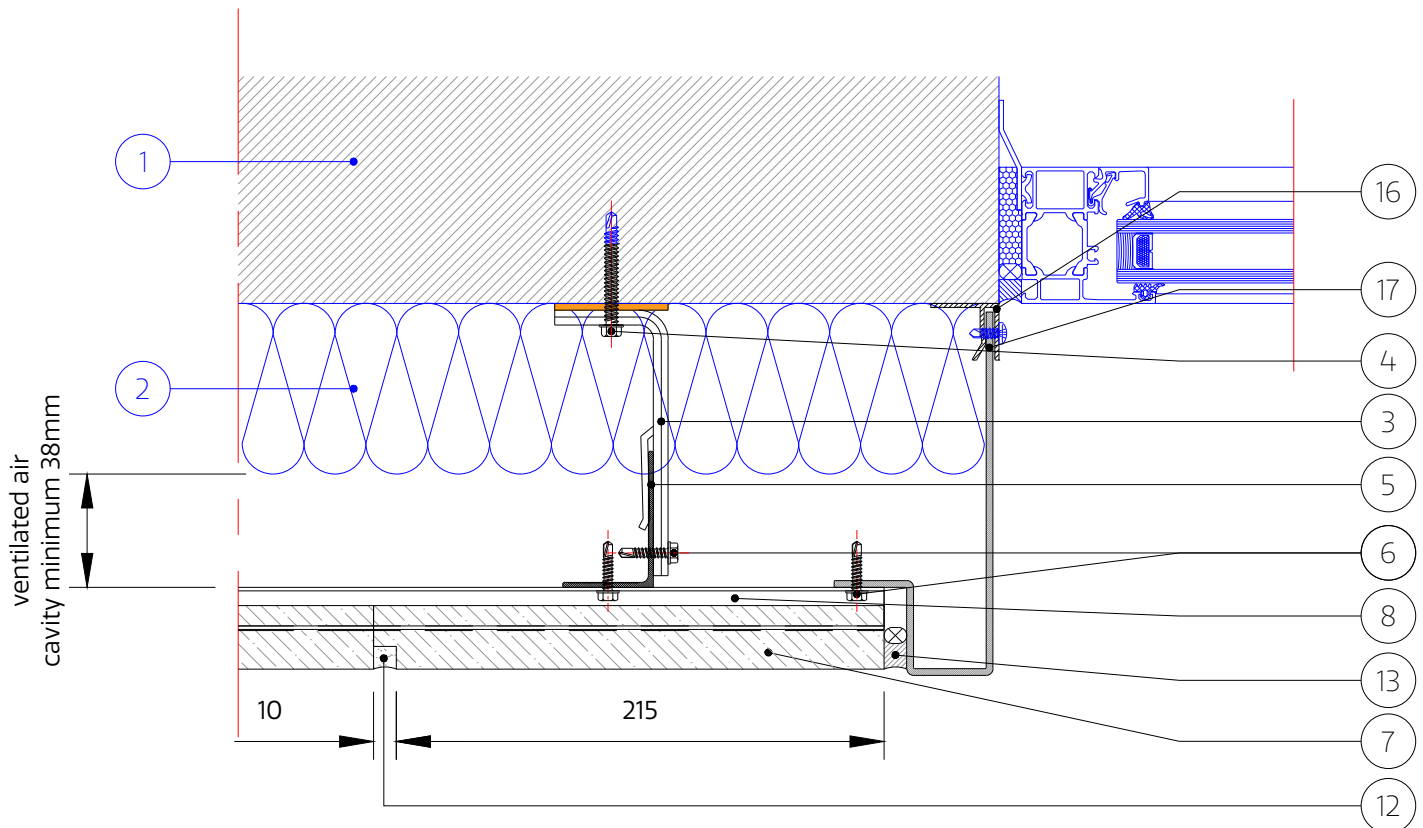
[-]

General Notes:

Do not scale this drawing - If in doubt contact the Technical Office.

It is the customers responsibility to ensure that Ash & Lacy products are correctly installed and that they are suitable for the customers particular requirement and application.

This drawing is copyright, reproduction or duplication of this drawing without the consent of Ash & Lacy is prohibited.



- | | | | |
|--|-----------------------------------|----------------------------|--------------------------------|
| 1. Substrate (by others) | 7. NaturAL-X Brick Slip | 14. Aluminum Angle | 22. Stainless Steel Bracket |
| 2. Insulation (by others) | 8. Intermediate Brick Rail | 15. Cleat (to be site cut) | 23. Stainless Steel Mullion |
| 3. Bracket | 9. Brick Start Rail | 16. 'F' Trim Support | 24. Stainless Steel |
| 4. Bracket/Wall Fixing
(Depending on Substrate) | 10. Brick Top Rail | 17. Window Flashing | Bracket/Mullion Fixing |
| 5. Mullion | 11. Horizontal Bracket
Adaptor | 18. Ventilated Section | 25. Stainless Steel Start Rail |
| 6. Support System/Brick Rail
Fixing | 12. Mortar Joint | 19. Vent Brick Slip | 26. Stainless Steel Top Rail |
| | 13. Sealant on back-up filler | 20. Coping to suit project | 27. Aluminum Brick Slip |
| | | 21. Damp Proof Course | 28. Bird Beak Flashing |

Note: All fixings, insulation and membranes indicated are for guidance only and need to be checked for each individual project

ASH & LACY

BROMFORD LANE
WEST BROMWICH
WEST MIDLANDS
B70 7JJ

TEL: 0121 525 1444

FAX: 0121 525 3444

WWW.ASHANDLACY.COM

Notes:

Rev	Description	Drawn	Check	Date
A	Flashing fixed to substrate not to window frame	EJ	YT	19/04/2021
B	Update draughting box with new logo, amend element descriptions	EJ	YT	25/08/2021
C				

Drawing Title:

Window Jamb
Metal Flashing

Drawn By:

EJ

Checked By:

YT

Date:

04/06/2020

Scale: NTS @ A4



Drawing Status:

Information

Client:

Project:

NaturAL-X Typical Details

Drawing No:

TD.NX.H1.G-06.00

Rev:

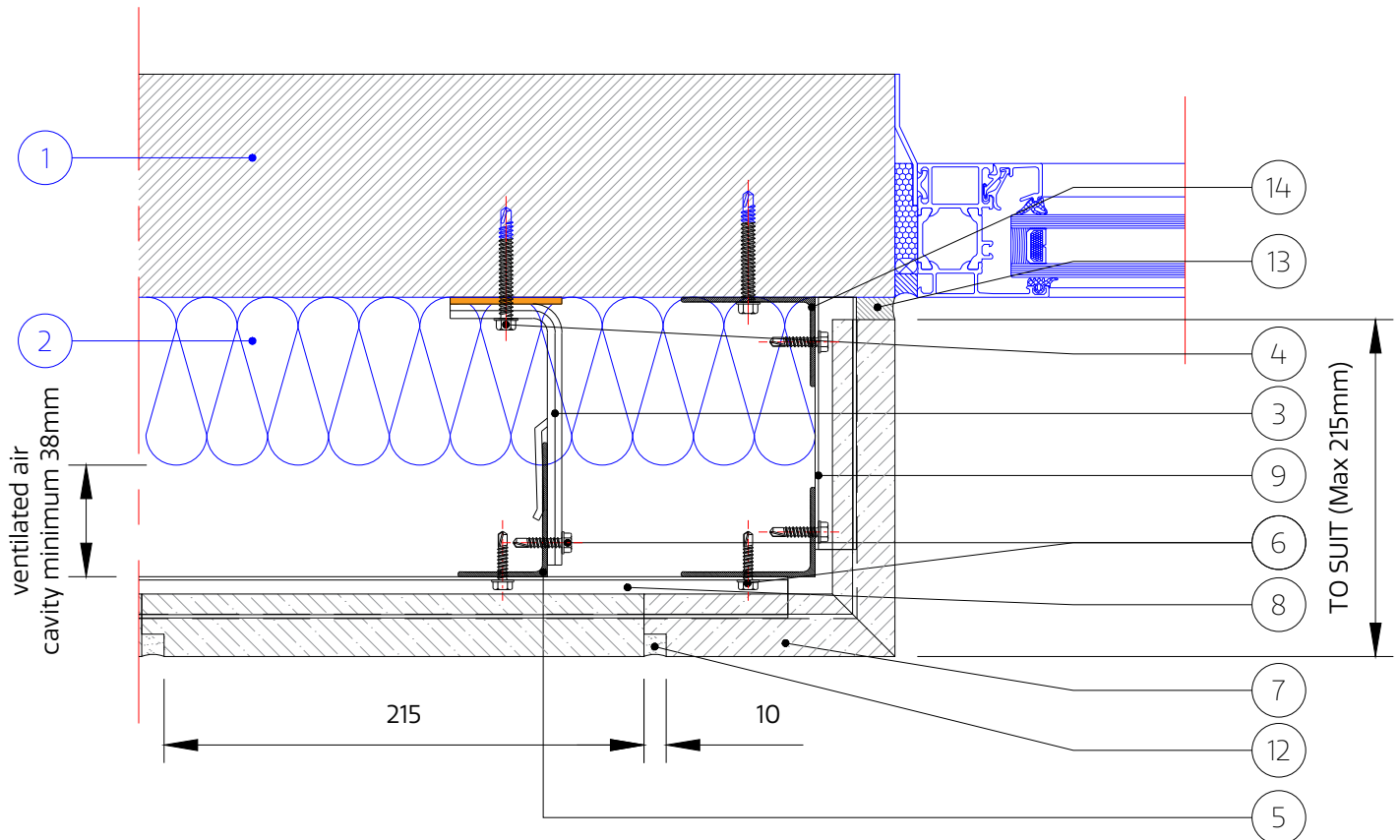
B

General Notes

Do not scale this drawing - If in doubt contact the Technical Office.

It is the customers responsibility to ensure that Ash & Lacy products are correctly installed and that they are suitable for the customers particular requirement and application.

This drawing is copyright, reproduction or duplication of this drawing without the consent of Ash & Lacy is prohibited.



- | | | | |
|--|-----------------------------------|----------------------------|--------------------------------|
| 1. Substrate (by others) | 7. NaturAL-X Brick Slip | 14. Aluminum Angle | 22. Stainless Steel Bracket |
| 2. Insulation (by others) | 8. Intermediate Brick Rail | 15. Cleat (to be site cut) | 23. Stainless Steel Mullion |
| 3. Bracket | 9. Brick Start Rail | 16. 'F' Trim Support | 24. Stainless Steel |
| 4. Bracket/Wall Fixing
(Depending on Substrate) | 10. Brick Top Rail | 17. Window Flashing | 25. Stainless Steel Start Rail |
| 5. Mullion | 11. Horizontal Bracket
Adaptor | 18. Ventilated Section | 26. Stainless Steel Top Rail |
| 6. Support System/Brick Rail
Fixing | 12. Mortar Joint | 19. Vent Brick Slip | 27. Aluminum Brick Slip |
| | 13. Sealant on back-up filler | 20. Coping to suit project | 28. Bird Beak Flashing |
| | | 21. Damp Proof Course | |

Note: All fixings, insulation and membranes indicated are for guidance only and need to be checked for each individual project

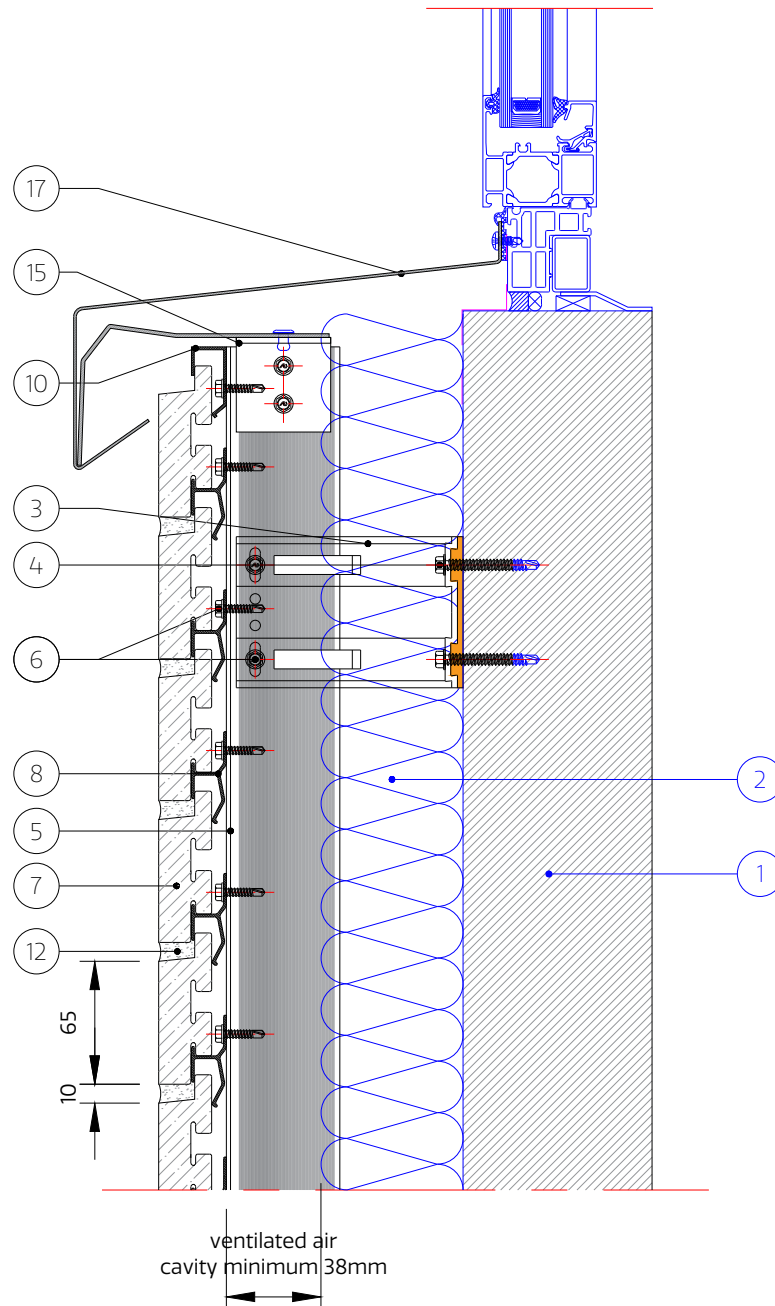
ASH & LACY BROMFORD LANE WEST BROMWICH WEST MIDLANDS B70 7JJ TEL: 0121 525 1444 FAX: 0121 525 3444 WWW.ASHANDLACY.COM	Notes:	<table border="1"> <thead> <tr> <th>Rev</th> <th>Description</th> <th>Drawn</th> <th>Check</th> <th>Date</th> </tr> </thead> <tbody> <tr> <td>A</td> <td>Update drawing box with new logo, amend element descriptions</td> <td>EJ</td> <td>YT</td> <td>25/08/2021</td> </tr> <tr> <td>B</td> <td></td> <td></td> <td></td> <td></td> </tr> <tr> <td>C</td> <td></td> <td></td> <td></td> <td></td> </tr> <tr> <td>D</td> <td></td> <td></td> <td></td> <td></td> </tr> </tbody> </table>	Rev	Description	Drawn	Check	Date	A	Update drawing box with new logo, amend element descriptions	EJ	YT	25/08/2021	B					C					D					Drawing Title: Window Jamb Brick Reveal	Drawing Status: Information
		Rev	Description	Drawn	Check	Date																							
A	Update drawing box with new logo, amend element descriptions	EJ	YT	25/08/2021																									
B																													
C																													
D																													
<table border="1"> <tbody> <tr> <td>Drawn By: EJ</td> <td>Checked By: YT</td> <td>Date: 04/06/2020</td> </tr> <tr> <td colspan="2">Scale: NTS @ A4</td> <td> </td> </tr> </tbody> </table>	Drawn By: EJ	Checked By: YT	Date: 04/06/2020	Scale: NTS @ A4			Client: Project: NaturAL-X Typical Details	Drawing No: TD.NX.H1.G-06.01	Rev: A																				
Drawn By: EJ	Checked By: YT	Date: 04/06/2020																											
Scale: NTS @ A4																													

General Notes:

Do not scale this drawing - If in doubt contact the Technical Office.

It is the customers responsibility to ensure that Ash & Lacy products are correctly installed and that they are suitable for the customers particular requirement and application.

This drawing is copyright, reproduction or duplication of this drawing without the consent of Ash & Lacy is prohibited.



- | | | | |
|--|-----------------------------------|----------------------------|--------------------------------|
| 1. Substrate (by others) | 7. NaturAL-X Brick Slip | 14. Aluminum Angle | 22. Stainless Steel Bracket |
| 2. Insulation (by others) | 8. Intermediate Brick Rail | 15. Cleat (to be site cut) | 23. Stainless Steel Mullion |
| 3. Bracket | 9. Brick Start Rail | 16. 'F' Trim Support | 24. Stainless Steel |
| 4. Bracket/Wall Fixing
(Depending on Substrate) | 10. Brick Top Rail | 17. Window Flashing | 25. Stainless Steel Start Rail |
| 5. Mullion | 11. Horizontal Bracket
Adaptor | 18. Ventilated Section | 26. Stainless Steel Top Rail |
| 6. Support System/Brick Rail
Fixing | 12. Mortar Joint | 19. Vent Brick Slip | 27. Aluminum Brick Slip |
| | 13. Sealant on back-up filler | 20. Coping to suit project | 28. Bird Beak Flashing |
| | | 21. Damp Proof Course | |

Note: All fixings, insulation and membranes indicated are for guidance only and need to be checked for each individual project

ASH & LACY

BROMFORD LANE
WEST BROMWICH
WEST MIDLANDS
B70 7JJ

TEL: 0121 525 1444

FAX: 0121 525 3444

WWW.ASHANDLACY.COM

Notes:

Rev	Description	Drawn	Check	Date
A	Window Cill Flashing amended	EJ	YT	19/04/2021
B	Update drawing box with new logo, amend element descriptions	EJ	YT	25/08/2021
C				

Drawing Title:

Window Cill
Stretcher Bond With Flashing

Drawn By:

EJ

Checked By:

YT

Date:

04/06/2020

Scale: 1:4 @ A4



Drawing Status:

Information

Client:

Project:

NaturAL-X Typical Details

Drawing No:

TD.NX.H1.G-07.00

Rev:

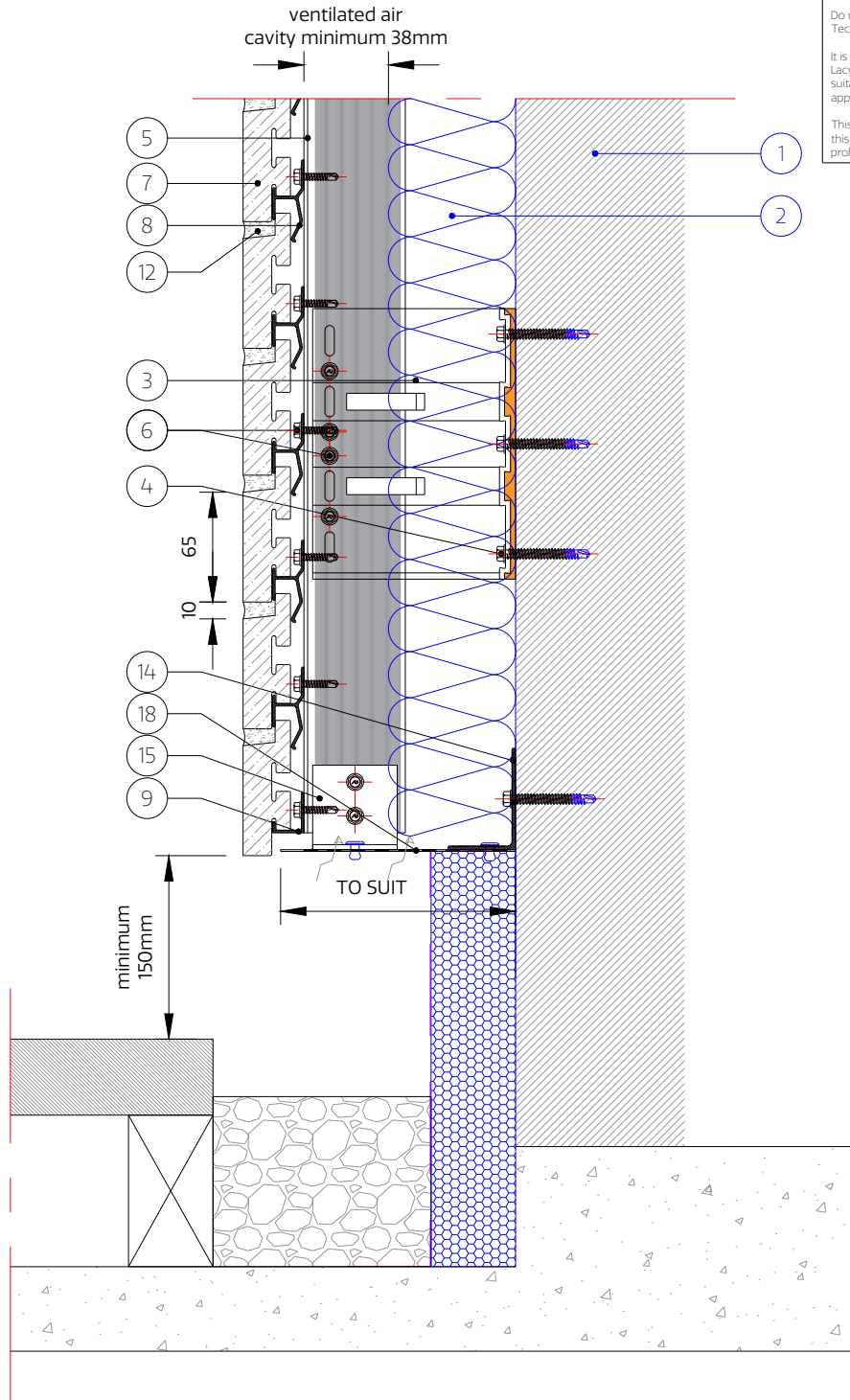
B

General Notes

Do not scale this drawing - If in doubt contact the Technical Office.

It is the customers responsibility to ensure that Ash & Lacy products are correctly installed and that they are suitable for the customers particular requirement and application.

This drawing is copyright, reproduction or duplication of this drawing without the consent of Ash & Lacy is prohibited.



- | | | | |
|--|-----------------------------------|----------------------------|--------------------------------|
| 1. Substrate (by others) | 7. NaturAL-X Brick Slip | 14. Aluminum Angle | 22. Stainless Steel Bracket |
| 2. Insulation (by others) | 8. Intermediate Brick Rail | 15. Cleat (to be site cut) | 23. Stainless Steel Mullion |
| 3. Bracket | 9. Brick Start Rail | 16. 'F' Trim Support | 24. Stainless Steel |
| 4. Bracket/Wall Fixing
(Depending on Substrate) | 10. Brick Top Rail | 17. Window Flashing | Bracket/Mullion Fixing |
| 5. Mullion | 11. Horizontal Bracket
Adaptor | 18. Ventilated Section | 25. Stainless Steel Start Rail |
| 6. Support System/Brick Rail
Fixing | 12. Mortar Joint | 19. Vent Brick Slip | 26. Stainless Steel Top Rail |
| | 13. Sealant on back-up filler | 20. Coping to suit project | 27. Aluminum Brick Slip |
| | | 21. Damp Proof Course | 28. Bird Beak Flashing |

Note: All fixings, insulation and membranes indicated are for guidance only and need to be checked for each individual project

ASH & LACY

BROMFORD LANE
WEST BROMWICH
WEST MIDLANDS
B70 7JJ

TEL: 0121 525 1444

FAX: 0121 525 3444

WWW.ASHANDLACY.COM

Notes

Rev	Description	Drawn	Check	Date
A	Update drawing box with new logo, amend element descriptions	EJ	YT	25/08/2021
B				
C				
D				

Drawing Title

Base Detail
Brick Above Ground

Drawn By:

EJ

Checked By:

YT

Date:

04/06/2020

Scale:

NTS @ A4



Drawing Status

Information

Client:

Project:

NaturAL-X Typical Details

Drawing No:

TD.NX.H1.G-08.00

Rev:

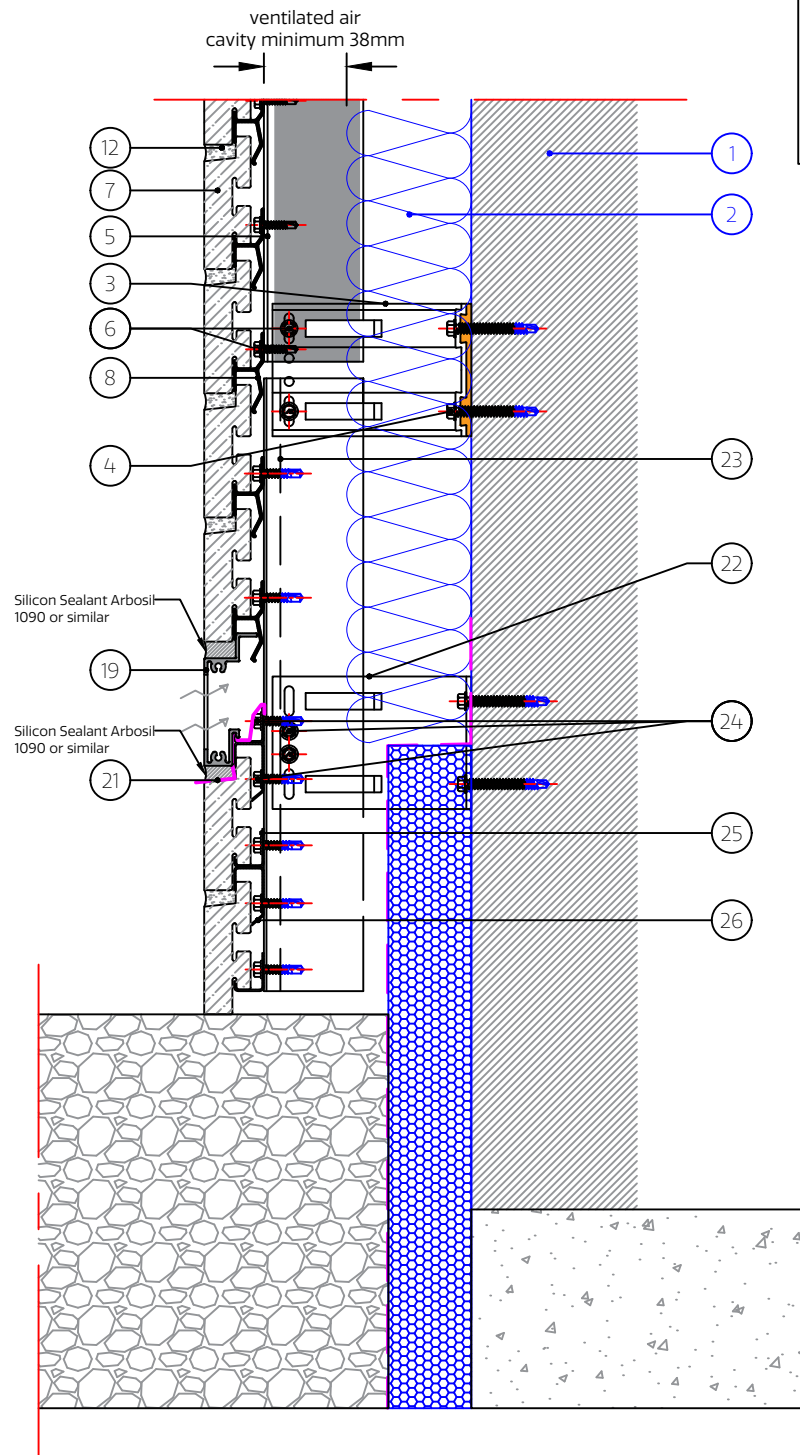
A

General Notes

Do not scale this drawing - If in doubt contact the Technical Office.

It is the customers responsibility to ensure that Ash & Lacy products are correctly installed and that they are suitable for the customers particular requirement and application.

This drawing is copyright, reproduction or duplication of this drawing without the consent of Ash & Lacy is prohibited.



- | | | | |
|---|--------------------------------|----------------------------|--|
| 1. Substrate (by others) | 7. NaturAL-X Brick Slip | 14. Aluminum Angle | 22. Stainless Steel Bracket |
| 2. Insulation (by others) | 8. Intermediate Brick Rail | 15. Cleat (to be site cut) | 23. Stainless Steel Mullion |
| 3. Bracket | 9. Brick Start Rail | 16. 'F' Trim Support | 24. Stainless Steel Bracket/Mullion Fixing |
| 4. Bracket/Wall Fixing (Depending on Substrate) | 10. Brick Top Rail | 17. Window Flashing | 25. Stainless Steel Start Rail |
| 5. Mullion | 11. Horizontal Bracket Adaptor | 18. Ventilated Section | 26. Stainless Steel Top Rail |
| 6. Support System/Brick Rail Fixing | 12. Mortar Joint | 19. Vent Brick Slip | 27. Aluminum Brick Slip |
| | 13. Sealant on back-up filler | 20. Coping to suit project | 28. Bird Beak Flashing |
| | | 21. Damp Proof Course | |

Note: All fixings, insulation and membranes indicated are for guidance only and need to be checked for each individual project

ASH & LACY

BROMFORD LANE
WEST BROMWICH
WEST MIDLANDS
B70 7JJ

TEL: 0121 525 1444

FAX: 0121 525 3444

WWW.ASHANDLACY.COM

Notes

Rev	Description	Drawn	Check	Date
A	Moved vent brick slip above DPC	EJ	YT	19/04/2021
B	Remove brick slips from below ground and leave brick slips only up to ground level	EJ	YT	09/07/2021
C	Update drawing box with new logo, amend element descriptions	EJ	YT	25/08/2021

Drawing Title :
**Base Detail
Bricks Below Ground**

Drawn By: EJ
Checked By: YT
Date: 14/09/2020

Scale: NTS @ A4



Drawing Status

Information

Client:

Project:

NaturAL-X Typical Details

Drawing No:

TD.NX.H1.G-08.01

Rev:

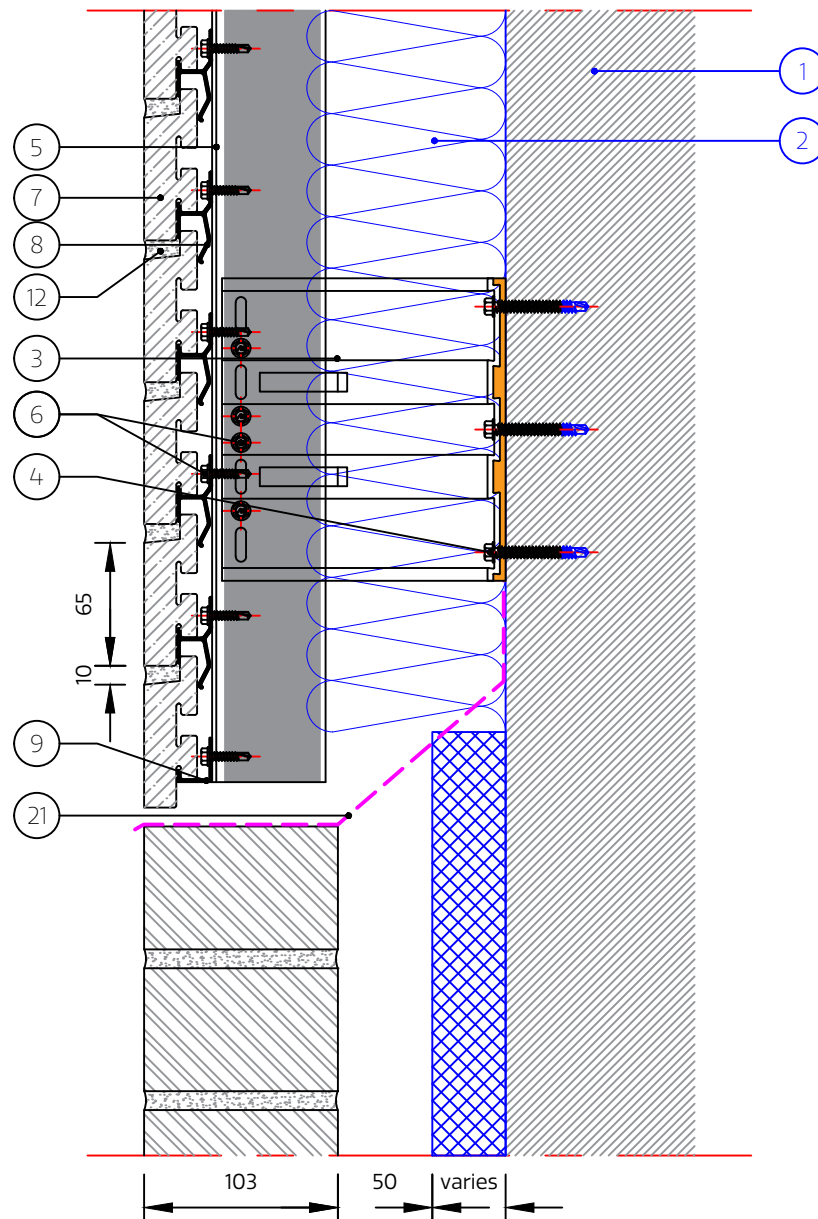
C

General Notes:

Do not scale this drawing - If in doubt contact the Technical Office.

It is the customers responsibility to ensure that Ash & Lacy products are correctly installed and that they are suitable for the customers particular requirement and application.

This drawing is copyright, reproduction or duplication of this drawing without the consent of Ash & Lacy is prohibited.



- | | | | |
|--|-----------------------------------|----------------------------|--------------------------------|
| 1. Substrate (by others) | 7. NaturAL-X Brick Slip | 14. Aluminum Angle | 22. Stainless Steel Bracket |
| 2. Insulation (by others) | 8. Intermediate Brick Rail | 15. Cleat (to be site cut) | 23. Stainless Steel Mullion |
| 3. Bracket | 9. Brick Start Rail | 16. 'F' Trim Support | 24. Stainless Steel |
| 4. Bracket/Wall Fixing
(Depending on Substrate) | 10. Brick Top Rail | 17. Window Flashing | 25. Bracket/Mullion Fixing |
| 5. Mullion | 11. Horizontal Bracket
Adaptor | 18. Ventilated Section | 26. Stainless Steel Start Rail |
| 6. Support System/Brick Rail
Fixing | 12. Mortar Joint | 19. Vent Brick Slip | 27. Aluminum Brick Slip |
| | 13. Sealant on back-up filler | 20. Coping to suit project | 28. Bird Beak Flashing |
| | | 21. Damp Proof Course | |

Note: All fixings, insulation and membranes indicated are for guidance only and need to be checked for each individual project

ASH & LACY

BROMFORD LANE
WEST BROMWICH
WEST MIDLANDS
B70 7JJ

TEL: 0121 525 1444

FAX: 0121 525 3444

WWW.ASHANDLACY.COM

Notes:

Rev	Description	Drawn	Check	Date
A	Update drawing box with new logo, amend element descriptions	EJ	YT	25/08/2021
B				
C				
D				

Drawing Title:

Base Detail
Traditional Brickwork Below DPC

Drawn By:

EJ

Checked By:

YT

Date:

15/07/2021

Scale:

NTS @ A4



Drawing Status:

Information

Client:

Project:

NaturAL-X Typical Details

Drawing No:

TD.NX.H1.G-08.02

Rev:

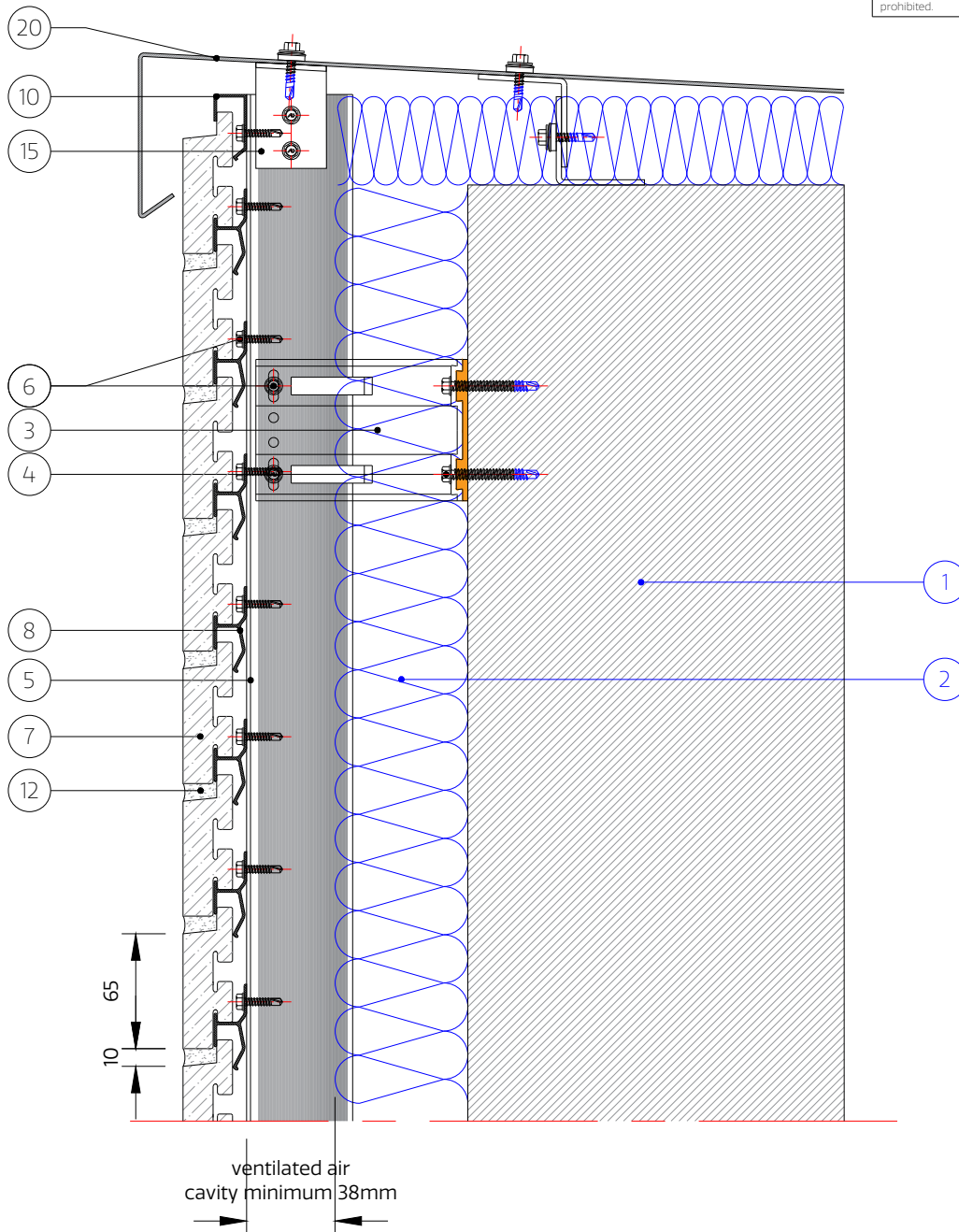
A

General Notes:

Do not scale this drawing - If in doubt contact the Technical Office.

It is the customers responsibility to ensure that Ash & Lacy products are correctly installed and that they are suitable for the customers particular requirement and application.

This drawing is copyright, reproduction or duplication of this drawing without the consent of Ash & Lacy is prohibited.



- | | | | |
|--|-----------------------------------|----------------------------|--------------------------------|
| 1. Substrate (by others) | 7. NaturAL-X Brick Slip | 14. Aluminum Angle | 22. Stainless Steel Bracket |
| 2. Insulation (by others) | 8. Intermediate Brick Rail | 15. Cleat (to be site cut) | 23. Stainless Steel Mullion |
| 3. Bracket | 9. Brick Start Rail | 16. 'F' Trim Support | 24. Stainless Steel |
| 4. Bracket/Wall Fixing
(Depending on Substrate) | 10. Brick Top Rail | 17. Window Flashing | 25. Bracket/Mullion Fixing |
| 5. Mullion | 11. Horizontal Bracket
Adaptor | 18. Ventilated Section | 26. Stainless Steel Start Rail |
| 6. Support System/Brick Rail
Fixing | 12. Mortar Joint | 19. Vent Brick Slip | 27. Aluminum Brick Slip |
| | 13. Sealant on back-up filler | 20. Coping to suit project | 28. Bird Beak Flashing |
| | | 21. Damp Proof Course | |

Note: All fixings, insulation and membranes indicated are for guidance only and need to be checked for each individual project

ASH & LACY

BROMFORD LANE
WEST BROMWICH
WEST MIDLANDS
B70 7JJ

TEL: 0121 525 1444

FAX: 0121 525 3444

WWW.ASHANDLACY.COM

Notes:

Rev	Description	Drawn	Check	Date
A	Update drawing box with new logo, amend element descriptions	EJ	YT	25/08/2021
B				
C				
D				

Drawing Title :

Parapet Detail

Drawn By:

EJ

Checked By:

YT

Date:

04/06/2020

Scale: 1:4 @ A4



Drawing Status:

Information

Client:

Project:

NaturAL-X Typical Details

Drawing No:

TD.NX.H1.G-09.00

Rev:

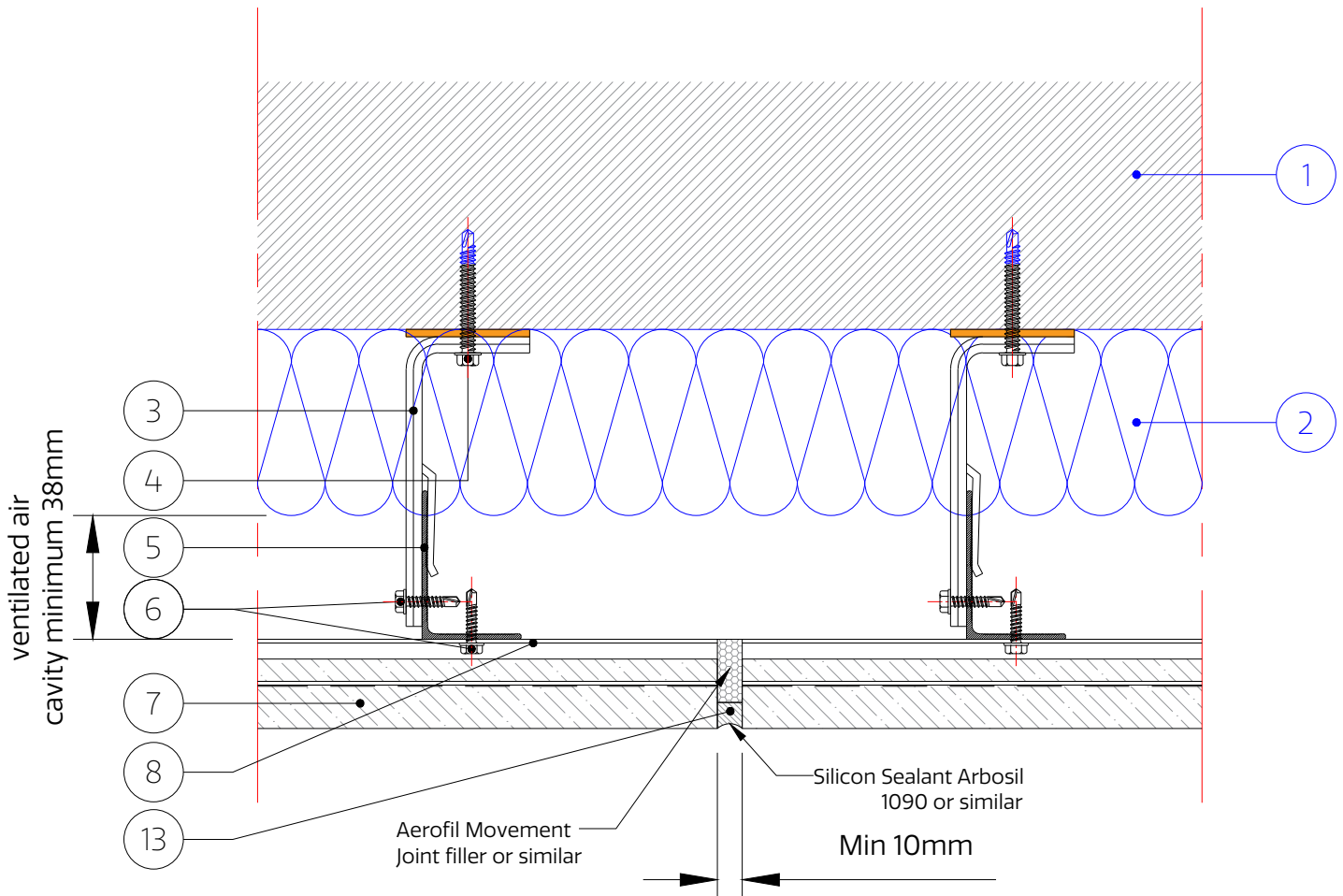
A

General Notes:

Do not scale this drawing - If in doubt contact the Technical Office.

It is the customers responsibility to ensure that Ash & Lacy products are correctly installed and that they are suitable for the customers particular requirement and application.

This drawing is copyright, reproduction or duplication of this drawing without the consent of Ash & Lacy is prohibited.



- | | | | |
|--|-----------------------------------|----------------------------|--------------------------------|
| 1. Substrate (by others) | 7. NaturAL-X Brick Slip | 14. Aluminum Angle | 22. Stainless Steel Bracket |
| 2. Insulation (by others) | 8. Intermediate Brick Rail | 15. Cleat (to be site cut) | 23. Stainless Steel Mullion |
| 3. Bracket | 9. Brick Start Rail | 16. 'F' Trim Support | 24. Stainless Steel |
| 4. Bracket/Wall Fixing
(Depending on Substrate) | 10. Brick Top Rail | 17. Window Flashing | 25. Bracket/Mullion Fixing |
| 5. Mullion | 11. Horizontal Bracket
Adaptor | 18. Ventilated Section | 26. Stainless Steel Start Rail |
| 6. Support System/Brick Rail
Fixing | 12. Mortar Joint | 19. Vent Brick Slip | 27. Aluminum Brick Slip |
| | 13. Sealant on back-up filler | 20. Coping to suit project | 28. Bird Beak Flashing |
| | | 21. Damp Proof Course | |

Note: All fixings, insulation and membranes indicated are for guidance only and need to be checked for each individual project

ASH & LACY

BROMFORD LANE
WEST BROMWICH
WEST MIDLANDS
B70 7JJ

TEL: 0121 525 1444

FAX: 0121 525 3444

WWW.ASHANDLACY.COM

Notes:

Rev	Description	Drawn	Check	Date
A	Add recommendation for sealant and joint filler manufacturer	EJ	YT	19/04/2021
B	Update drawing box with new logo, amend element descriptions	EJ	YT	25/08/2021
C				

Drawing Title:

Vertical Thermal Movement Joint

Drawn By:

EJ

Checked By:

YT

Date:

04/06/2020

Scale: NTS @ A4



Drawing Status:

Information

Client:

Project:

NaturAL-X Typical Details

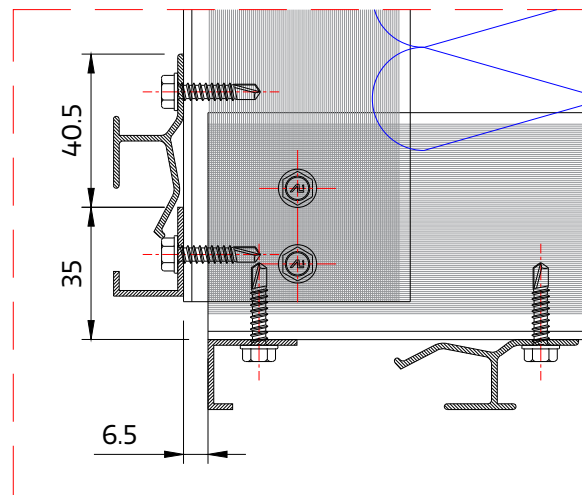
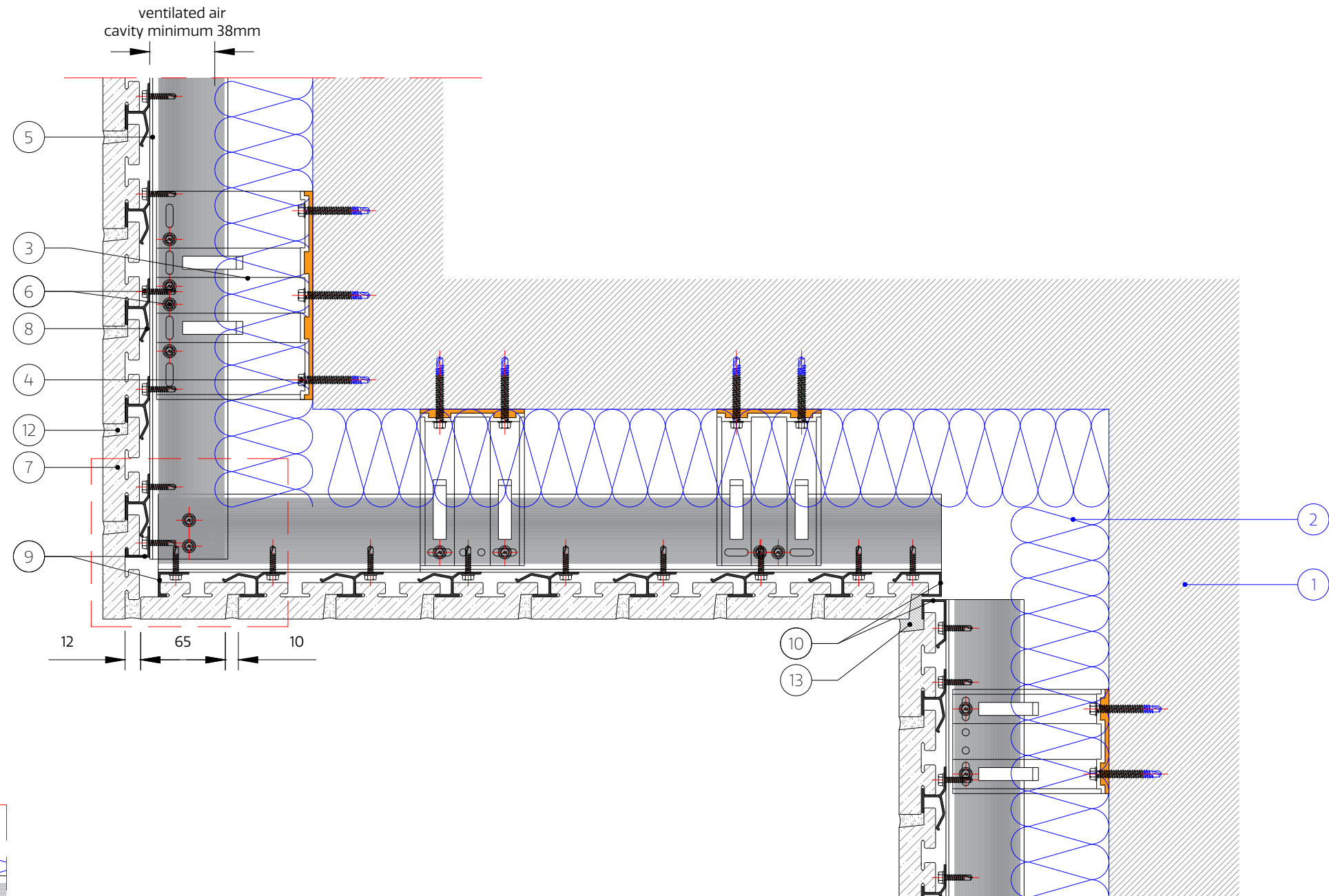
Drawing No:

TD.NX.H1.G-10.00

Rev:

B

General Notes:
Do not scale this drawing - If in doubt contact the Technical Office.
It is the customers responsibility to ensure that Ash & Lacy products are correctly installed and that they are suitable for the customers particular requirement and application.
This drawing is copyright, reproduction or duplication of this drawing without the consent of Ash & Lacy is prohibited.



- | | | | |
|--|-------------------------------|----------------------------|--------------------------------|
| 1. Substrate (by others) | 7. NaturAL-X Brick Slip | 14. Aluminum Angle | 22. Stainless Steel Bracket |
| 2. Insulation (by others) | 8. Intermediate Brick Rail | 15. Cleat (to be site cut) | 23. Stainless Steel Mullion |
| 3. Bracket | 9. Brick Start Rail | 16. 'F' Trim Support | 24. Stainless Steel |
| 4. Bracket/Wall Fixing
(Depending on Substrate) | 10. Brick Top Rail | 17. Window Flashing | Bracket/Mullion Fixing |
| 5. Mullion | 11. Horizontal Bracket | 18. Ventilated Section | 25. Stainless Steel Start Rail |
| 6. Support System/Brick Rail
Fixing | 12. Mortar Joint | 19. Vent Brick Slip | 26. Stainless Steel Top Rail |
| | 13. Sealant on back-up filler | 20. Coping to suit project | 27. Aluminum Brick Slip |
| | | 21. Damp Proof Course | 28. Bird Beak Flashing |

Note: All fixings, insulation and membranes indicated are for guidance only and need to be checked for each individual project

C			
B			
A	Update drawing box with new logo, amend element descriptions, add additional section	EJ	YT 25/06/2020
Rev	Description	Drawn	Check Date

Drawing Status:
Information



BROMFORD LANE
WEST BROMWICH
WEST MIDLANDS
B70 7JJ
TEL: 0121 525 1444
FAX: 0121 525 3444
WWW.ASHANDLACY.COM

Client :

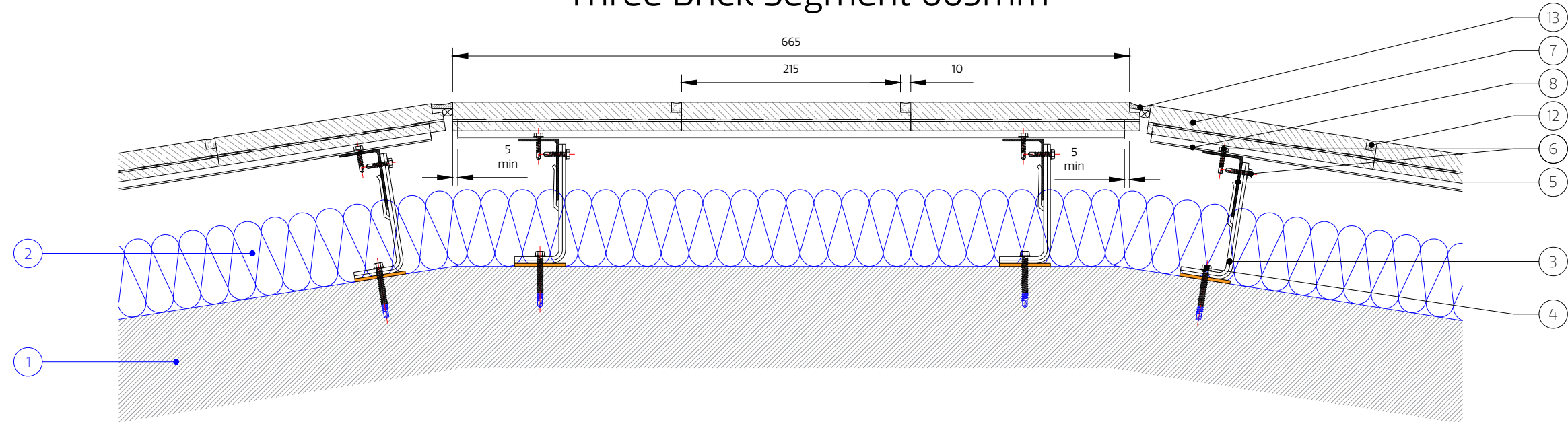
Project :
NaturAL-X Typical Detail

Drawing Title :
Soffit Detail
Separate Bricks

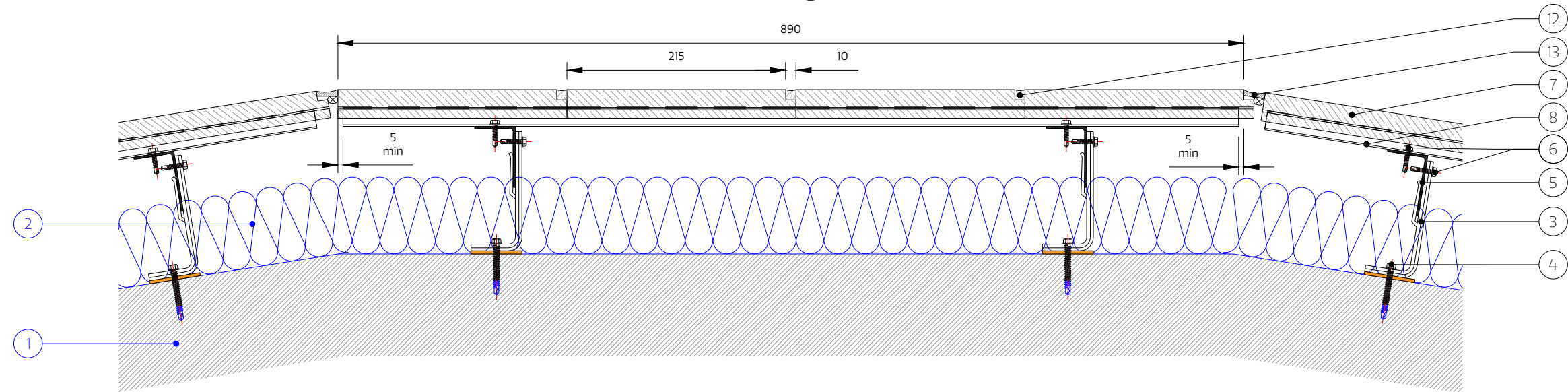
Drawn By: EJ	Checked By: YT	Date: 04/06/2020
Scale: 1:4 @ A3		
Drawing No: TD.NX.H1.G-12.00	Rev: A	

General Notes:
Do not scale this drawing - If in doubt contact the Technical Office.
It is the customers responsibility to ensure that Ash & Lacy products are correctly installed and that they are suitable for the customers particular requirement and application.
This drawing is copyright, reproduction or duplication of this drawing without the consent of Ash & Lacy is prohibited.

Three Brick Segment 665mm



Four Brick Segment 890mm



- | | | | |
|--|-------------------------------|----------------------------|--------------------------------|
| 1. Substrate (by others) | 7. NaturAL-X Brick Slip | 14. Aluminum Angle | 22. Stainless Steel Bracket |
| 2. Insulation (by others) | 8. Intermediate Brick Rail | 15. Cleat (to be site cut) | 23. Stainless Steel Mullion |
| 3. Bracket | 9. Brick Start Rail | 16. 'F' Trim Support | 24. Stainless Steel |
| 4. Bracket/Wall Fixing
(Depending on Substrate) | 10. Brick Top Rail | 17. Window Flashing | Bracket/Mullion Fixing |
| 5. Mullion | 11. Horizontal Bracket | 18. Ventilated Section | 25. Stainless Steel Start Rail |
| 6. Support System/Brick Rail
Fixing | 12. Mortar Joint | 19. Vent Brick Slip | 26. Stainless Steel Top Rail |
| | 13. Sealant on back-up filler | 20. Coping to suit project | 27. Aluminum Brick Slip |
| | | 21. Damp Proof Course | 28. Bird Beak Flashing |

Note: All fixings, insulation and membranes indicated are for guidance only and need to be checked for each individual project

C			
B			
A	Update drawing box with new logo, amend element descriptions	EJ	YT 25/08/2020
Rev	Description	Drawn	Check Date

Drawing Status:
Information

ASH & LACY

BROMFORD LANE
WEST BROMWICH
WEST MIDLANDS
B70 7JJ
TEL: 0121 525 1444
FAX: 0121 525 3444
WWW.ASHANDLACY.COM

Client :

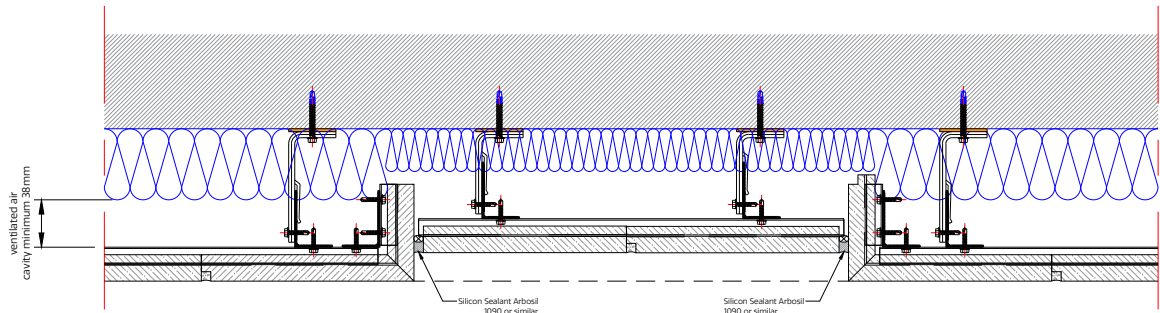
Project :
NaturAL-X Typical Detail

Drawing Title :
Curved Wall
Rabbit Joint

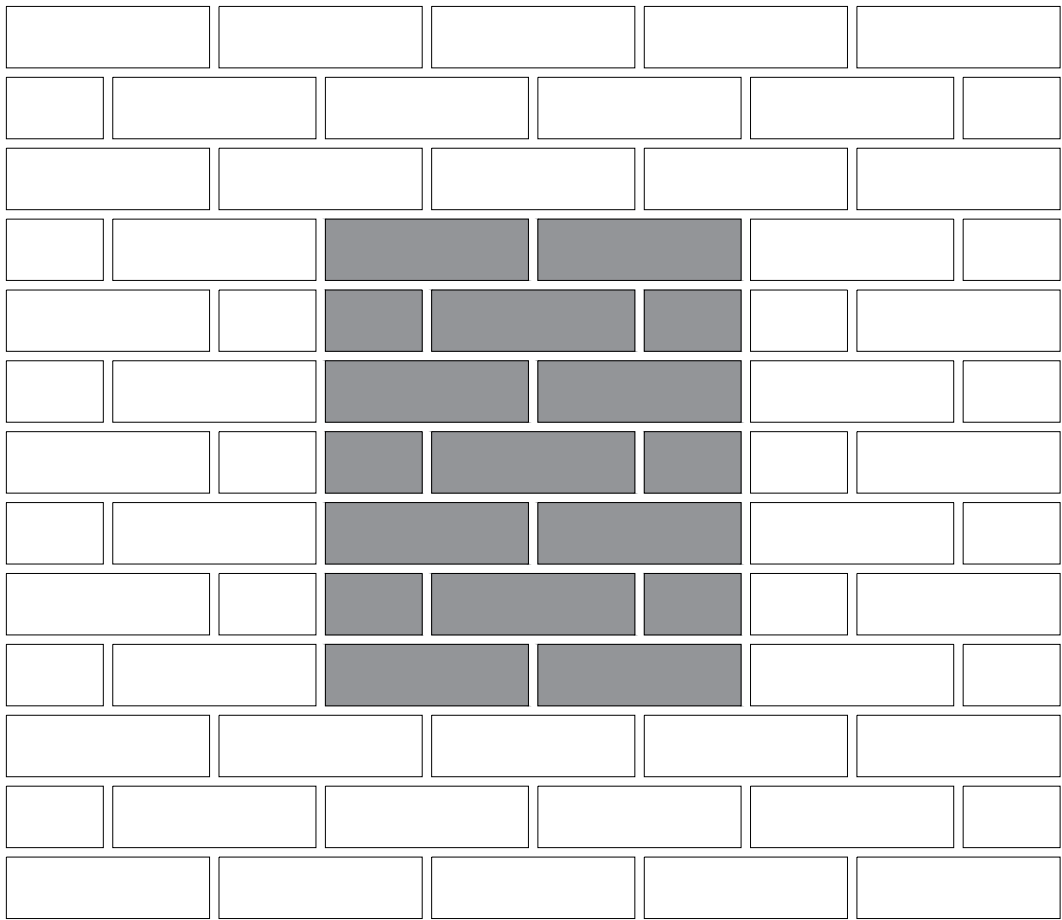
Drawn By: EJ	Checked By: YT	Date: 04/06/2020
Scale: 1:5 @ A3		
Drawing No: TD.NX.H1.G-13.00	Rev: A	

General Notes:
Do not scale this drawing - If in doubt contact the Technical Office.
It is the customers responsibility to ensure that Ash & Lacy products are correctly installed and that they are suitable for the customers particular requirement and application.
This drawing is copyright, reproduction or duplication of this drawing without the consent of Ash & Lacy is prohibited.

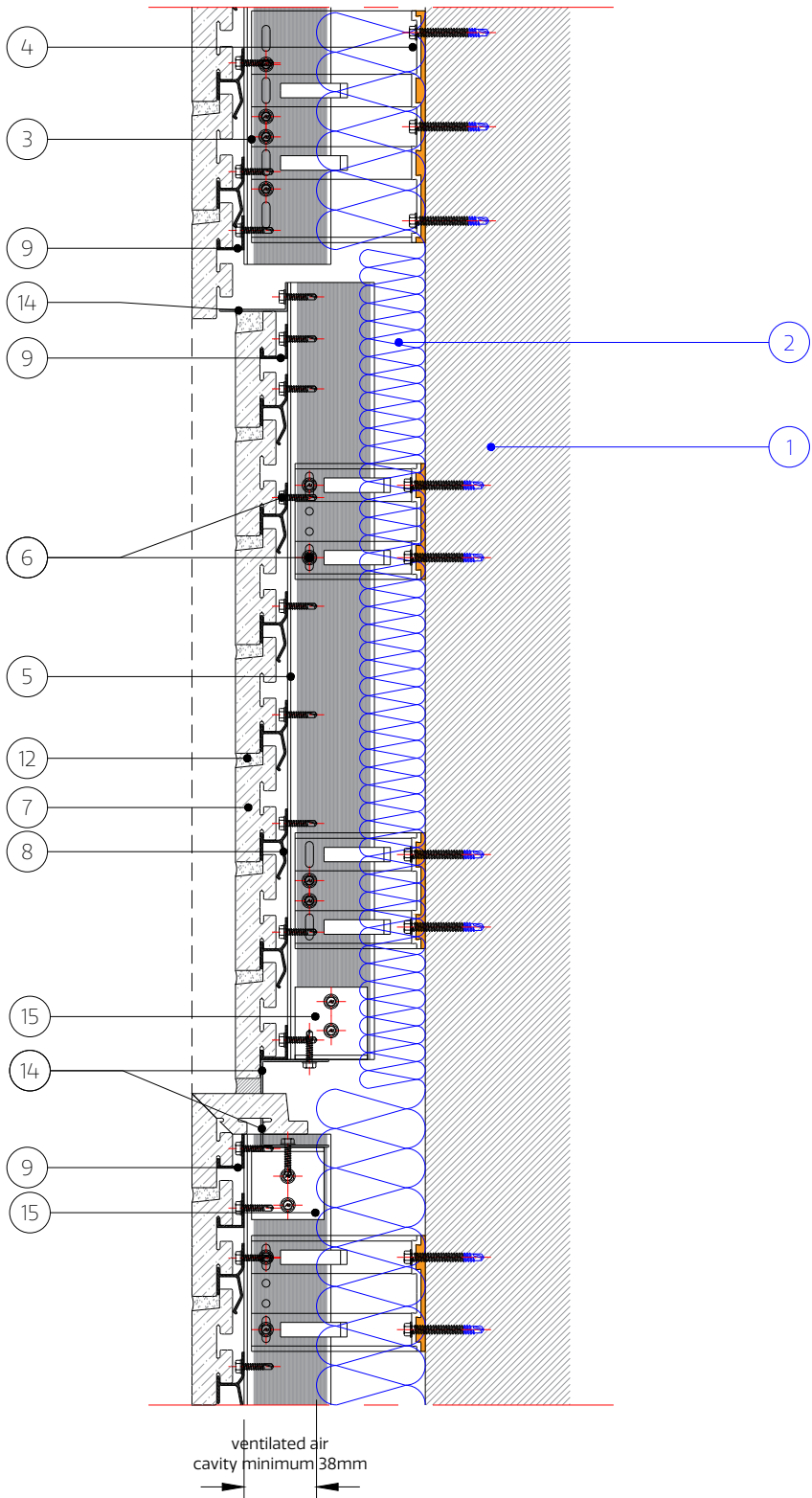
Plan View - 1:8



Elevation View - 1:8



Section View - 1:5



- | | | | |
|--|-------------------------------|----------------------------|--------------------------------|
| 1. Substrate (by others) | 7. NaturAL-X Brick Slip | 14. Aluminum Angle | 22. Stainless Steel Bracket |
| 2. Insulation (by others) | 8. Intermediate Brick Rail | 15. Cleat (to be site cut) | 23. Stainless Steel Mullion |
| 3. Bracket | 9. Brick Start Rail | 16. 'F' Trim Support | 24. Stainless Steel |
| 4. Bracket/Wall Fixing
(Depending on Substrate) | 10. Brick Top Rail | 17. Window Flashing | Bracket/Mullion Fixing |
| 5. Mullion | 11. Horizontal Bracket | 18. Ventilated Section | 25. Stainless Steel Start Rail |
| 6. Support System/Brick Rail
Fixing | 12. Adaptor | 19. Vent Brick Slip | 26. Stainless Steel Top Rail |
| | 13. Mortar Joint | 20. Coping to suit project | 27. Aluminum Brick Slip |
| | 13. Sealant on back-up filler | 21. Damp Proof Course | 28. Bird Beak Flashing |

Note: All fixings, insulation and membranes indicated are for guidance only and need to be checked for each individual project

Note: This detail is suitable for recess depth of up to 50mm.

C				
B				
A	Update drawing box with new logo, amend element descriptions, add additional section	EJ	YT	25/08/2020
Rev	Description	Drawn	Check	Date

Drawing Status:
Information



BROMFORD LANE
WEST BROMWICH
WEST MIDLANDS
B70 7JJ
TEL: 0121 525 1444
FAX: 0121 525 3444
WWW.ASHANDLACY.COM

Client :

Project :
NaturAL-X Typical Detail

Drawing Title :
Recess Detail

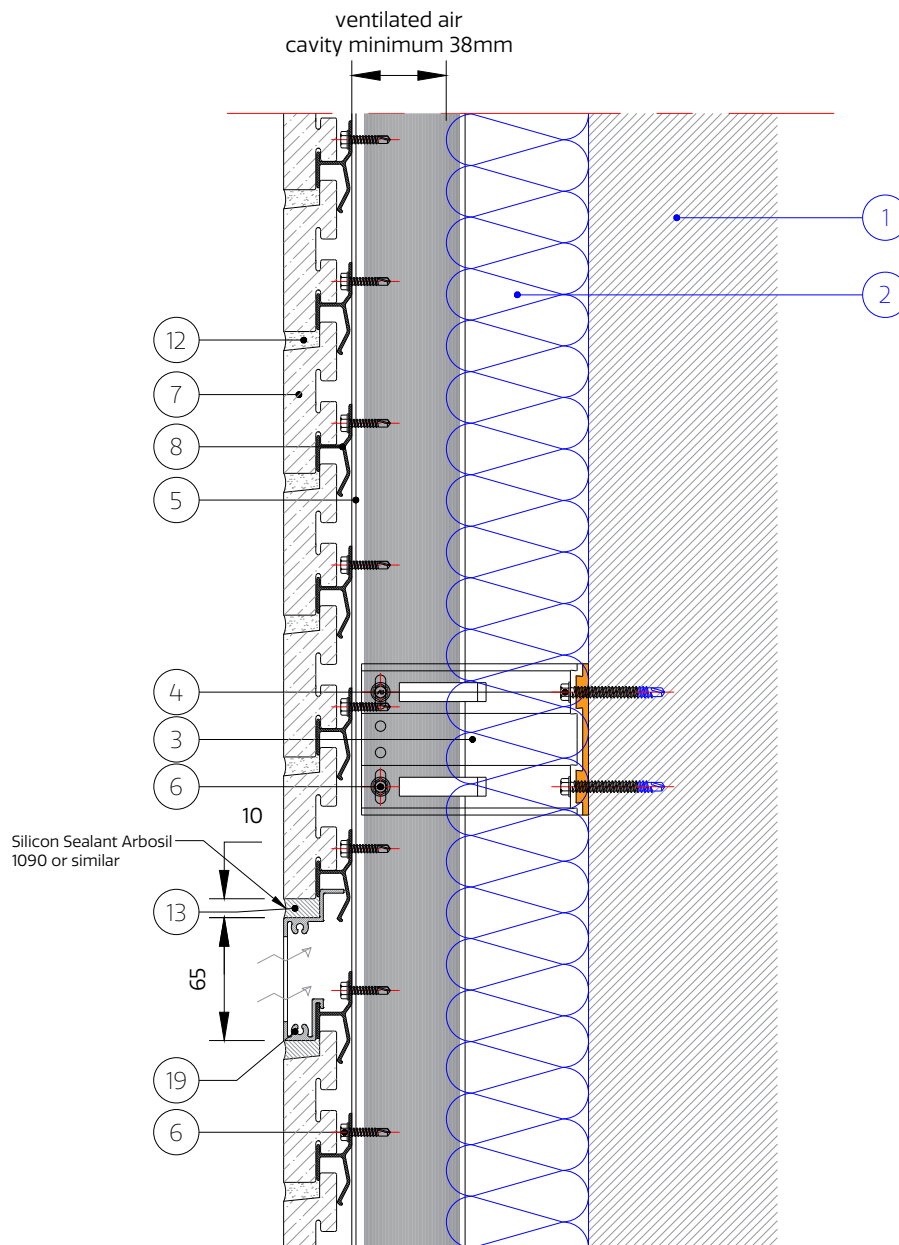
Drawn By: EJ	Checked By: YT	Date: 04/06/2020
Scale: NTS @ A3		
Drawing No: TD.NX.H1.G-14.00	Rev: A	

General Notes:

Do not scale this drawing - If in doubt contact the Technical Office.

It is the customers responsibility to ensure that Ash & Lacy products are correctly installed and that they are suitable for the customers particular requirement and application.

This drawing is copyright, reproduction or duplication of this drawing without the consent of Ash & Lacy is prohibited.



Note: Joint around Vent Brick Slip must be sealed using Sealant instead of Mortar.

- | | | | |
|---|--------------------------------|----------------------------|--|
| 1. Substrate (by others) | 7. NaturAL-X Brick Slip | 14. Aluminum Angle | 22. Stainless Steel Bracket |
| 2. Insulation (by others) | 8. Intermediate Brick Rail | 15. Cleat (to be site cut) | 23. Stainless Steel Mullion |
| 3. Bracket | 9. Brick Start Rail | 16. 'F' Trim Support | 24. Stainless Steel Bracket/Mullion Fixing |
| 4. Bracket/Wall Fixing (Depending on Substrate) | 10. Brick Top Rail | 17. Window Flashing | 25. Stainless Steel Start Rail |
| 5. Mullion | 11. Horizontal Bracket Adaptor | 18. Ventilated Section | 26. Stainless Steel Top Rail |
| 6. Support System/Brick Rail Fixing | 12. Mortar Joint | 19. Vent Brick Slip | 27. Aluminum Brick Slip |
| | 13. Sealant on back-up filler | 20. Coping to suit project | 28. Bird Beak Flashing |
| | | 21. Damp Proof Course | |

Note: All fixings, insulation and membranes indicated are for guidance only and need to be checked for each individual project

ASH & LACY

BROMFORD LANE
WEST BROMWICH
WEST MIDLANDS
B70 7JJ

TEL: 0121 525 1444

FAX: 0121 525 3444

WWW.ASHANDLACY.COM

Notes:

Rev	Description	Drawn	Check	Date
A	Update drawing box with new logo, amend element descriptions	EJ	YT	25/08/2021
B				
C				
D				

Drawing Title:

Horizontal Joint
With Vent Brick

Drawn By:

EJ

Checked By:

YT

Date:

04/06/2020

Scale: 1:4 @ A4



Drawing Status:

Information

Client:

Project:

NaturAL-X Typical Details

Drawing No:

TD.NX.H1.G-15.00

Rev:

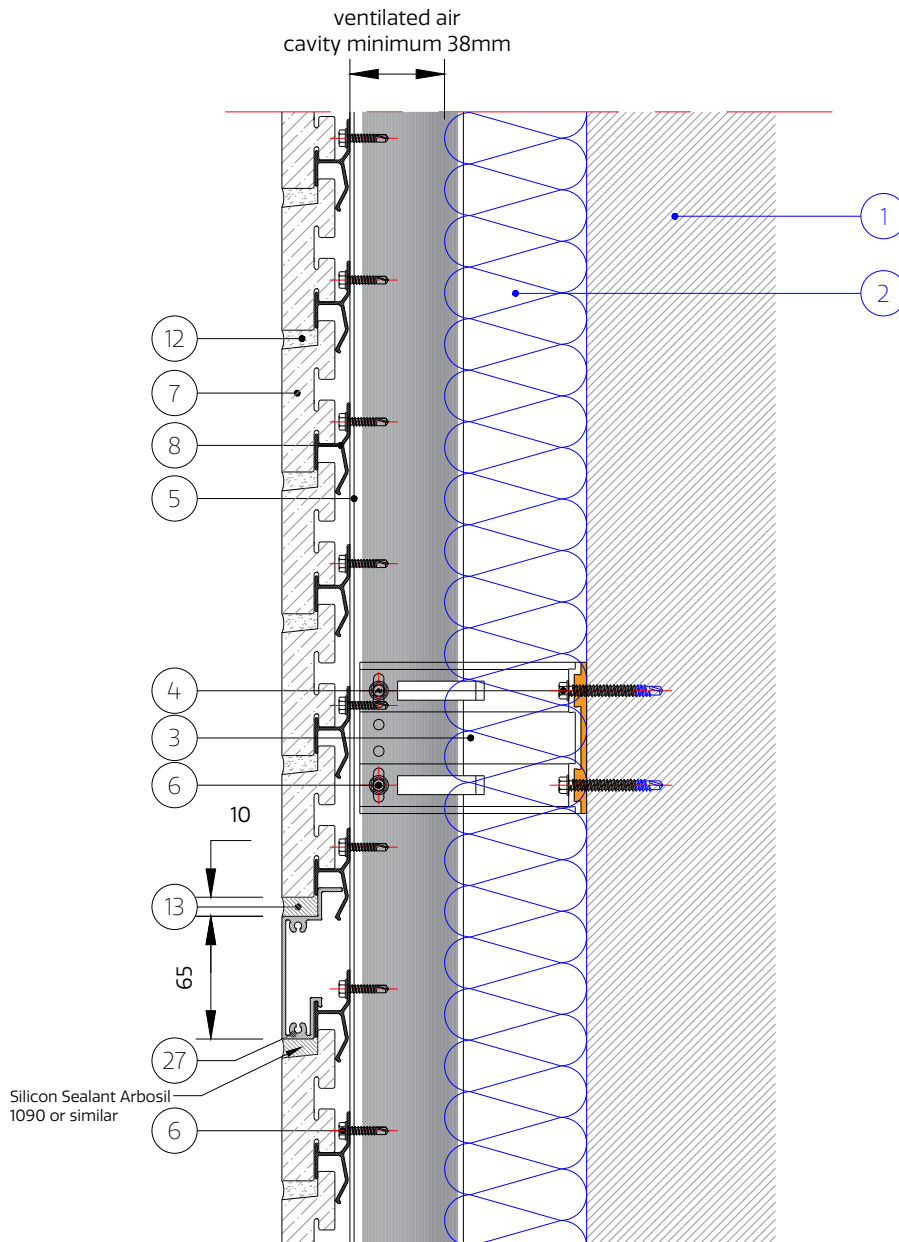
A

General Notes:

Do not scale this drawing - If in doubt contact the Technical Office.

It is the customers responsibility to ensure that Ash & Lacy products are correctly installed and that they are suitable for the customers particular requirement and application.

This drawing is copyright, reproduction or duplication of this drawing without the consent of Ash & Lacy is prohibited.



Note: Joint around Alum Brick Slip must be sealed using Sealant instead of Mortar.

- | | | | |
|--|-----------------------------------|----------------------------|--------------------------------|
| 1. Substrate (by others) | 7. NaturAL-X Brick Slip | 14. Aluminum Angle | 22. Stainless Steel Bracket |
| 2. Insulation (by others) | 8. Intermediate Brick Rail | 15. Cleat (to be site cut) | 23. Stainless Steel Mullion |
| 3. Bracket | 9. Brick Start Rail | 16. 'F' Trim Support | 24. Stainless Steel |
| 4. Bracket/Wall Fixing
(Depending on Substrate) | 10. Brick Top Rail | 17. Window Flashing | 25. Stainless Steel Start Rail |
| 5. Mullion | 11. Horizontal Bracket
Adaptor | 18. Ventilated Section | 26. Stainless Steel Top Rail |
| 6. Support System/Brick Rail
Fixing | 12. Mortar Joint | 19. Vent Brick Slip | 27. Aluminum Brick Slip |
| | 13. Sealant on back-up filler | 20. Coping to suit project | 28. Bird Beak Flashing |
| | | 21. Damp Proof Course | |

Note: All fixings, insulation and membranes indicated are for guidance only and need to be checked for each individual project

ASH & LACY

BROMFORD LANE
WEST BROMWICH
WEST MIDLANDS
B70 7JJ

TEL: 0121 525 1444

FAX: 0121 525 3444

WWW.ASHANDLACY.COM

Notes:

Rev	Description	Drawn	Check	Date
A	Update drawing box with new logo, amend element descriptions	EJ	YT	25/08/2021
B				
C				
D				

Drawing Title:

Horizontal Joint
With Alum Brick

Drawn By:

EJ

Checked By:

YT

Date:

27/10/2020

Scale: 1:4 @ A4



Drawing Status:

Information

Client:

Project:

NaturAL-X Typical Details

Drawing No:

TD.NX.H1.G-15.01

Rev:

A

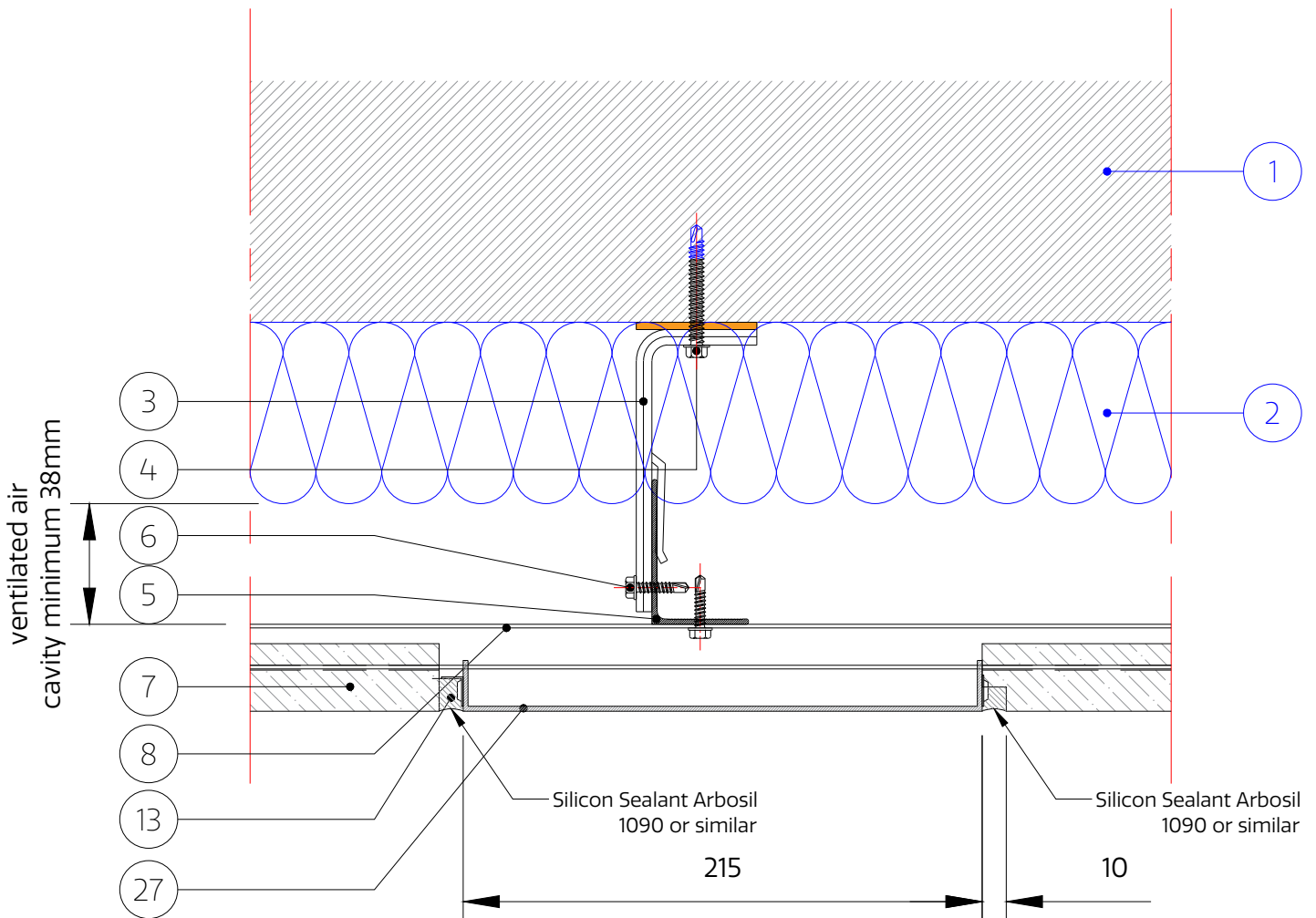


General Notes:

Do not scale this drawing - If in doubt contact the Technical Office.

It is the customers responsibility to ensure that Ash & Lacy products are correctly installed and that they are suitable for the customers particular requirement and application.

This drawing is copyright, reproduction or duplication of this drawing without the consent of Ash & Lacy is prohibited.



Note: Joint around Alum Brick Slip must be sealed using Sealant instead of Mortar.

- | | | | |
|--|-------------------------------|----------------------------|--------------------------------|
| 1. Substrate (by others) | 7. NaturAL-X Brick Slip | 14. Aluminum Angle | 22. Stainless Steel Bracket |
| 2. Insulation (by others) | 8. Intermediate Brick Rail | 15. Cleat (to be site cut) | 23. Stainless Steel Mullion |
| 3. Bracket | 9. Brick Start Rail | 16. 'F' Trim Support | 24. Stainless Steel |
| 4. Bracket/Wall Fixing
(Depending on Substrate) | 10. Brick Top Rail | 17. Window Flashing | Bracket/Mullion Fixing |
| 5. Mullion | 11. Horizontal Bracket | 18. Ventilated Section | 25. Stainless Steel Start Rail |
| 6. Support System/Brick Rail | Adaptor | 19. Vent Brick Slip | 26. Stainless Steel Top Rail |
| Fixing | 12. Mortar Joint | 20. Coping to suit project | 27. Aluminum Brick Slip |
| | 13. Sealant on back-up filler | 21. Damp Proof Course | 28. Bird Beak Flashing |

Note: All fixings, insulation and membranes indicated are for guidance only and need to be checked for each individual project

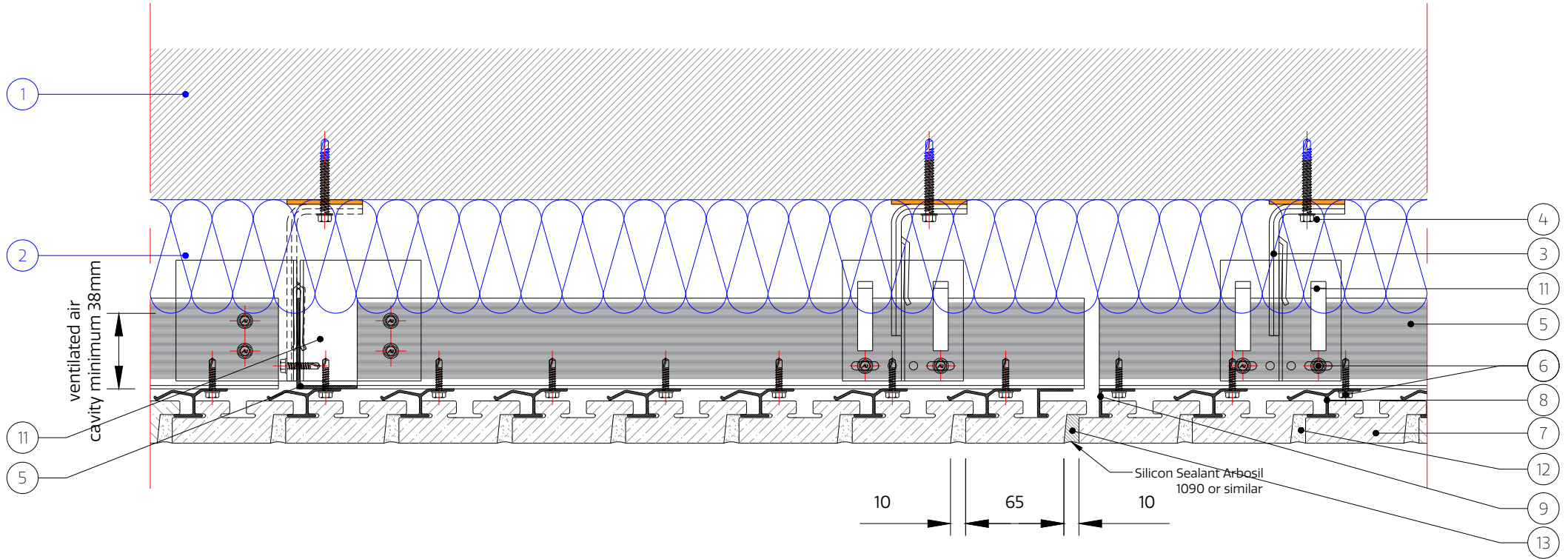
ASH & LACY BROMFORD LANE WEST BROMWICH WEST MIDLANDS B70 7JJ TEL: 0121 525 1444 FAX: 0121 525 3444 WWW.ASHANDLACY.COM	Notes:	Rev	Description	Drawn	Check	Date	Drawing Title: Vertical Joint With Alum Brick Draun By: EJ Checked By: YT Date: 27/10/2020 Scale: NTS @ A4	Drawing Status: Information Client: Project: NaturAL-X Typical Details Drawing No: TD.NX.H1.G-16.01 Rev: A
		A	Update drawing box with new logo, amend element descriptions	EJ	YT	25/08/2021		
		B						
		C						
		D						

General Notes:

Do not scale this drawing - If in doubt contact the Technical Office.

It is the customers responsibility to ensure that Ash & Lacy products are correctly installed and that they are suitable for the customers particular requirement and application.

This drawing is copyright, reproduction or duplication of this drawing without the consent of Ash & Lacy is prohibited.



ASH & LACY

BROMFORD LANE
WEST BROMWICH
WEST MIDLANDS
B70 7JJ

TEL: 0121 525 1444

FAX: 0121 525 3444

WWW.ASHANDLACY.COM

Notes:

- | | | | |
|------------------------------|-------------------------------|----------------------------|--------------------------------|
| 1. Substrate (by others) | 7. NaturAL-X Brick Slip | 14. Aluminum Angle | 22. Stainless Steel Bracket |
| 2. Insulation (by others) | 8. Intermediate Brick Rail | 15. Cleat (to be site cut) | 23. Stainless Steel Mullion |
| 3. Bracket | 9. Brick Start Rail | 16. 'F' Trim Support | 24. Stainless Steel |
| 4. Bracket/Wall Fixing | 10. Brick Top Rail | 17. Window Flashing | Bracket/Mullion Fixing |
| (Depending on Substrate) | 11. Horizontal Bracket | 18. Ventilated Section | 25. Stainless Steel Start Rail |
| 5. Mullion | 12. Mortar Joint | 19. Vent Brick Slip | 26. Stainless Steel Top Rail |
| 6. Support System/Brick Rail | 13. Sealant on back-up filler | 20. Coping to suit project | 27. Aluminum Brick Slip |
| Fixing | | 21. Damp Proof Course | 28. Bird Beak Flashing |
- Note: All fixings, insulation and membranes indicated are for guidance only and need to be checked for each individual project

Rev	Description	Drawn	Check	Date
A	Update drawing box with new logo, amend element descriptions	EJ	YT	25/08/2021
B				
C				
D				

Drawing Title:
**Vertical Thermal Movement Joint
Soldier Bond**

Drawn By: EJ
Checked By: YT
Date: 04/06/2020

Scale: NTS @ A4

Drawing Status:
Information

Client:

Project:
NaturAL-X Typical Detail

Drawing No:
TD.NX.H1.G-17.00

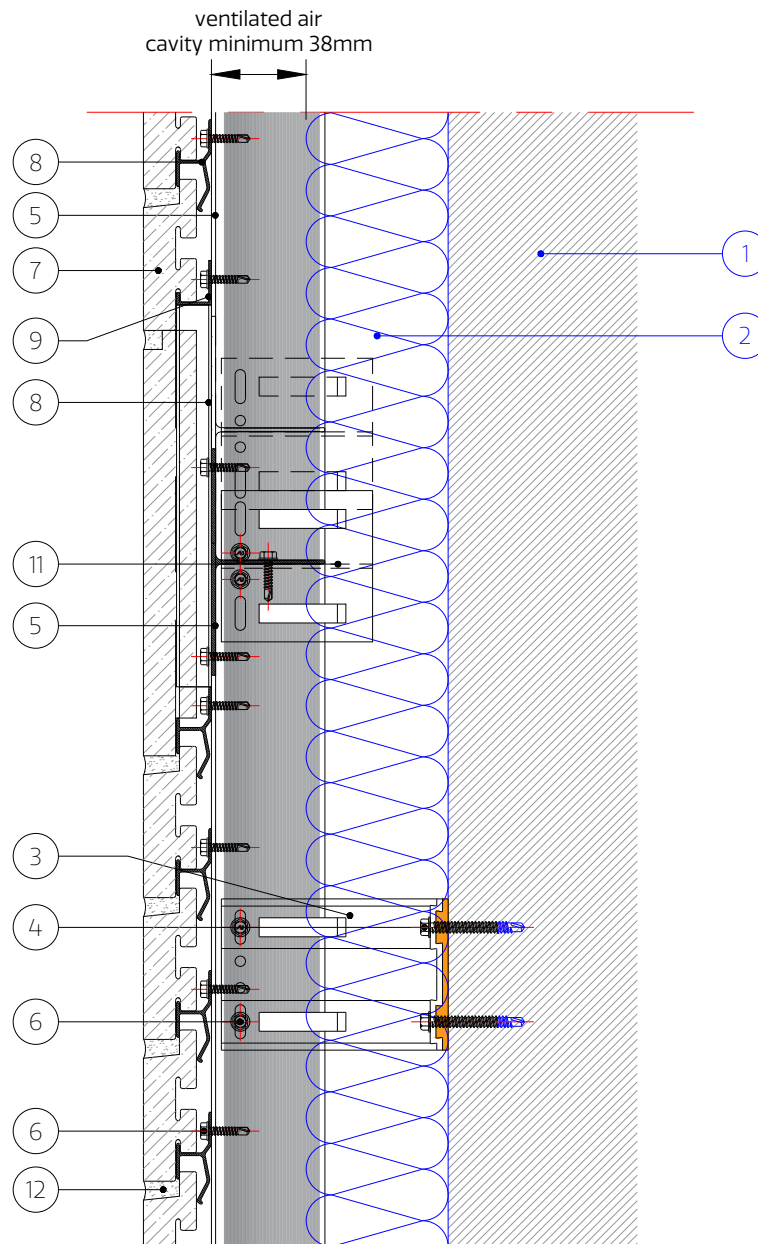
Rev:
A

General Notes:

Do not scale this drawing - If in doubt contact the Technical Office.

It is the customers responsibility to ensure that Ash & Lacy products are correctly installed and that they are suitable for the customers particular requirement and application.

This drawing is copyright, reproduction or duplication of this drawing without the consent of Ash & Lacy is prohibited.



- | | | | |
|---|--------------------------------|----------------------------|--|
| 1. Substrate (by others) | 7. NaturAL-X Brick Slip | 14. Aluminum Angle | 22. Stainless Steel Bracket |
| 2. Insulation (by others) | 8. Intermediate Brick Rail | 15. Cleat (to be site cut) | 23. Stainless Steel Mullion |
| 3. Bracket | 9. Brick Start Rail | 16. 'F' Trim Support | 24. Stainless Steel Bracket/Mullion Fixing |
| 4. Bracket/Wall Fixing (Depending on Substrate) | 10. Brick Top Rail | 17. Window Flashing | 25. Stainless Steel Start Rail |
| 5. Mullion | 11. Horizontal Bracket Adaptor | 18. Ventilated Section | 26. Stainless Steel Top Rail |
| 6. Support System/Brick Rail Fixing | 12. Mortar Joint | 19. Vent Brick Slip | 27. Aluminum Brick Slip |
| | 13. Sealant on back-up filler | 20. Coping to suit project | 28. Bird Beak Flashing |
| | | 21. Damp Proof Course | |

Note: All fixings, insulation and membranes indicated are for guidance only and need to be checked for each individual project

ASH & LACY

BROMFORD LANE
WEST BROMWICH
WEST MIDLANDS
B70 7JJ
TEL: 0121 525 1444
FAX: 0121 525 3444
WWW.ASHANDLACY.COM

Notes:

Rev	Description	Drawn	Check	Date
A	Update drawing box with new logo, amend element descriptions	EJ	YT	25/08/2021
B				
C				
D				

Drawing Title:

Horizontal Joint
With one Standing Soldier Course

Drawn By:

EJ

Checked By:

YT

Date:

26/03/2021

Scale:

1:4 @ A4



Drawing Status:

Information

Client:

Project:

NaturAL-X Typical Details

Drawing No:

TD.NX.H1.G-19.00

Rev:

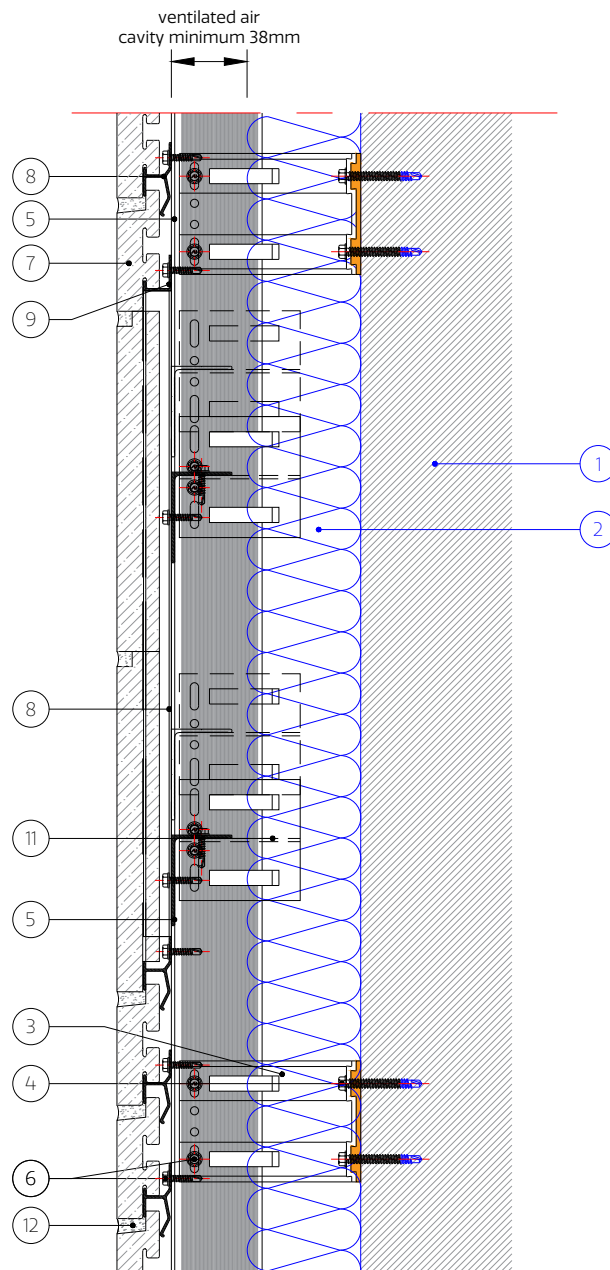
A

General Notes

Do not scale this drawing - If in doubt contact the Technical Office.

It is the customers responsibility to ensure that Ash & Lacy products are correctly installed and that they are suitable for the customers particular requirement and application.

This drawing is copyright, reproduction or duplication of this drawing without the consent of Ash & Lacy is prohibited.



- | | | | |
|---|--------------------------------|----------------------------|--|
| 1. Substrate (by others) | 7. NaturAL-X Brick Slip | 14. Aluminum Angle | 22. Stainless Steel Bracket |
| 2. Insulation (by others) | 8. Intermediate Brick Rail | 15. Cleat (to be site cut) | 23. Stainless Steel Mullion |
| 3. Bracket | 9. Brick Start Rail | 16. 'F' Trim Support | 24. Stainless Steel Bracket/Mullion Fixing |
| 4. Bracket/Wall Fixing (Depending on Substrate) | 10. Brick Top Rail | 17. Window Flashing | 25. Stainless Steel Start Rail |
| 5. Mullion | 11. Horizontal Bracket Adaptor | 18. Ventilated Section | 26. Stainless Steel Top Rail |
| 6. Support System/Brick Rail Fixing | 12. Mortar Joint | 19. Vent Brick Slip | 27. Aluminum Brick Slip |
| | 13. Sealant on back-up filler | 20. Coping to suit project | 28. Bird Beak Flashing |
| | | 21. Damp Proof Course | |

Note: All fixings, insulation and membranes indicated are for guidance only and need to be checked for each individual project

ASH & LACY

BROMFORD LANE
WEST BROMWICH
WEST MIDLANDS
B70 7JJ

TEL: 0121 525 1444

FAX: 0121 525 3444

WWW.ASHANDLACY.COM

Notes:

Rev	Description	Drawn	Check	Date
A	Update drawing box with new logo, amend element descriptions	EJ	YT	25/08/2021
B				
C				
D				

Drawing Title :

Horizontal Joint
With two Standing Soldier Courses

Drawn By:

EJ

Checked By:

YT

Date :

09/04/2021

Scale : 1:4 @ A4



Drawing Status:

Information

Client :

Project :

NaturAL-X Typical Details

Drawing No :

TD.NX.H1.G-19.01

Rev:

A