

A TRIUMPH IN E17

Challenging brief to award-winning result



“We are delighted with the finished result and with the awards and accolades that the building has subsequently received.”

JUSTIN LASKIN
ASSOCIATE ARCHITECT OF
POLLARD THOMAS EDWARDS



PROJECT NAME

THE SCENE, CLEVELAND PLACE, WALTHAMSTOW

BRICK FINISH



SR13-91

DEVELOPER

Hill Partnership

INSTALLER

LSC Facades

ARCHITECT

Pollard Thomas Edwards

CLIENT

Waltham Forest Council &
Islington and Shoreditch
Housing Association

Designed by architects Pollard Thomas Edwards for developer Hill Partnership, the mixed-use Walthamstow Arcade development featured some 2,000m² of Gebrik insulating brick cladding system, supplied by Aquarian. Despite several design and technical challenges, Aquarian's technical expertise and assiduous support contributed to an award-winning flagship development.

Curved, non-90 degree cornering, carefully colour-matched 'metallic' brick finishes - plus the need for rigorous warranty testing - allowed us to show off our design and technical skills on this flagship inner-city project.

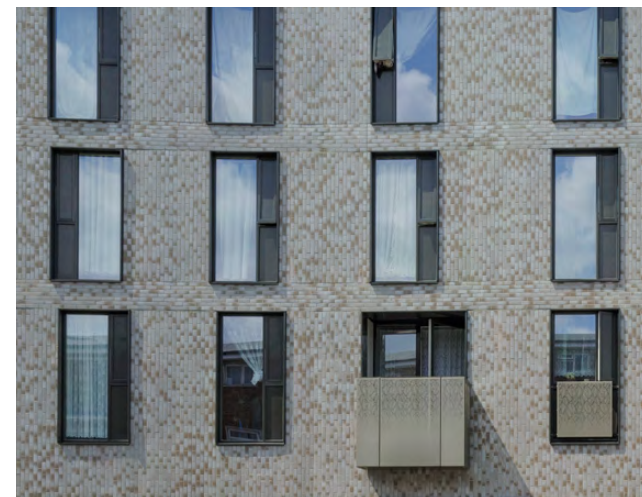
The mixed-use development, known as The Scene at Cleveland Place, includes a new nine-screen cinema, restaurants, retail units, apartments and houses around a communal garden – and is key to Waltham Forest Council's revitalisation of the town.

Designed by architects PTE for developer Hill Partnership, it featured approximately 2,000m² of the Gebrik insulating brick cladding system, supplied by Aquarian.

We worked closely with the architects and developer to create a bespoke solution to meet their brief. Our technical team also had to make sure that new homes warranty provider NHBC would include the Gebrik system in its New Homes Warranty.

"The curved façades and vertical bond pattern called for in our design, together with a requirement for NHBC approval, meant Gebrik provided the perfect solution," said scheme architect Justin Laskin. "Although I hadn't worked with Aquarian before, the process was extremely smooth and we received superb support throughout."

"We were impressed with the remarkable speed of construction of Gebrik, and given our very specific requirements, we are delighted with the final product - the iridescent, reflective



glazed finish of the bricks is spectacular. We're also delighted with the finished result - as well as the awards that the building has subsequently received."

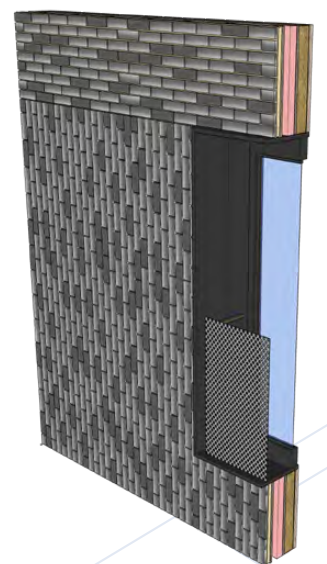
Matt Wilson from Hill Partnership said: "the structure was designed to be a concrete frame and we always had in mind that a brick cladding system would be used for the façades to deliver the desired combination of finish, performance, speed and cost. We looked at a number of systems, but ultimately the support we received from Aquarian and the fact that they worked so closely with NHBC were key to our final specification. Another key issue was getting a good colour match, but Aquarian's team worked tirelessly to get the exact finish we were looking for."



"The support we received from Aquarian and the fact that they worked so closely with NHBC were key to our final specification."

MATT WILSON
DEVELOPER, HILL PARTNERSHIP

www.aquariancladding.co.uk
0044 (0)808 223 9080



AQUARIAN
CLADDING SYSTEMS