

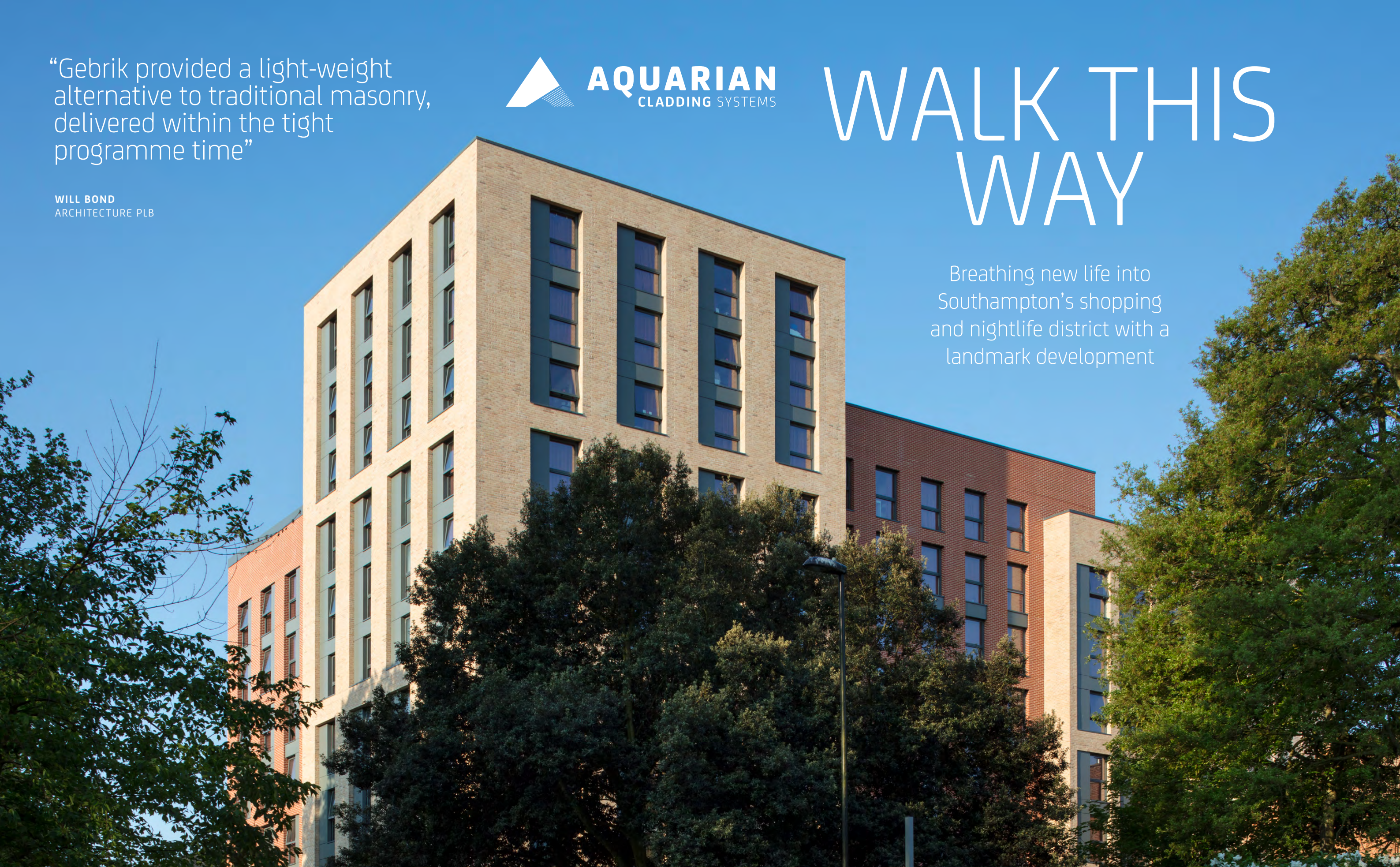
“Gebrik provided a light-weight alternative to traditional masonry, delivered within the tight programme time”

**WILL BOND**  
ARCHITECTURE PLB



# WALK THIS WAY

Breathing new life into  
Southampton's shopping  
and nightlife district with a  
landmark development





## PROJECT NAME

# VINCENT'S WALK, SOUTHAMPTON

## BRICK FINISH



FE00-28



FE00-50

## CLIENT / DEVELOPER

Victoria Hall Management Ltd

## MAIN CONTRACTOR

Galliford Try

## INSTALLER

T&T Facades

## ARCHITECT

ArchitecturePLB

Vincent's Walk is an elegant new development by Victoria Hall Management Ltd in Central Southampton, providing accommodation for 283 students, with a cinema room, gym and roof terrace, plus retail space on the ground floor. Having worked closely with ArchitecturePLB and main contractor Galliford Try at early stages, Aquarian Cladding Systems provided support to installer T&T Facades as they made expert use of over 4000m<sup>2</sup> of the Gebrik brick cladding system.

Reliability, predictability and time savings made Aquarian's Gebrik system the perfect choice for this stylish development at the edge of Southampton's main retailing and nightlife area. A stone's throw from Southampton Solent University's campus, and standing between eight and eleven storeys high, it provides purpose-built accommodation for over 280 students.

Alongside its exemplary aesthetics, the main drivers for using Gebrik were programme savings and reduction of loadings on the frame. "The challenging programme steered the project towards a light-gauge steel frame solution but it was unable to take the loads of the proposed traditional masonry facades", says Will Bond of ArchitecturePLB. Will continues, "Gebrik provided a light-weight alternative to traditional masonry that was delivered within the tight programme time for the main contractor."

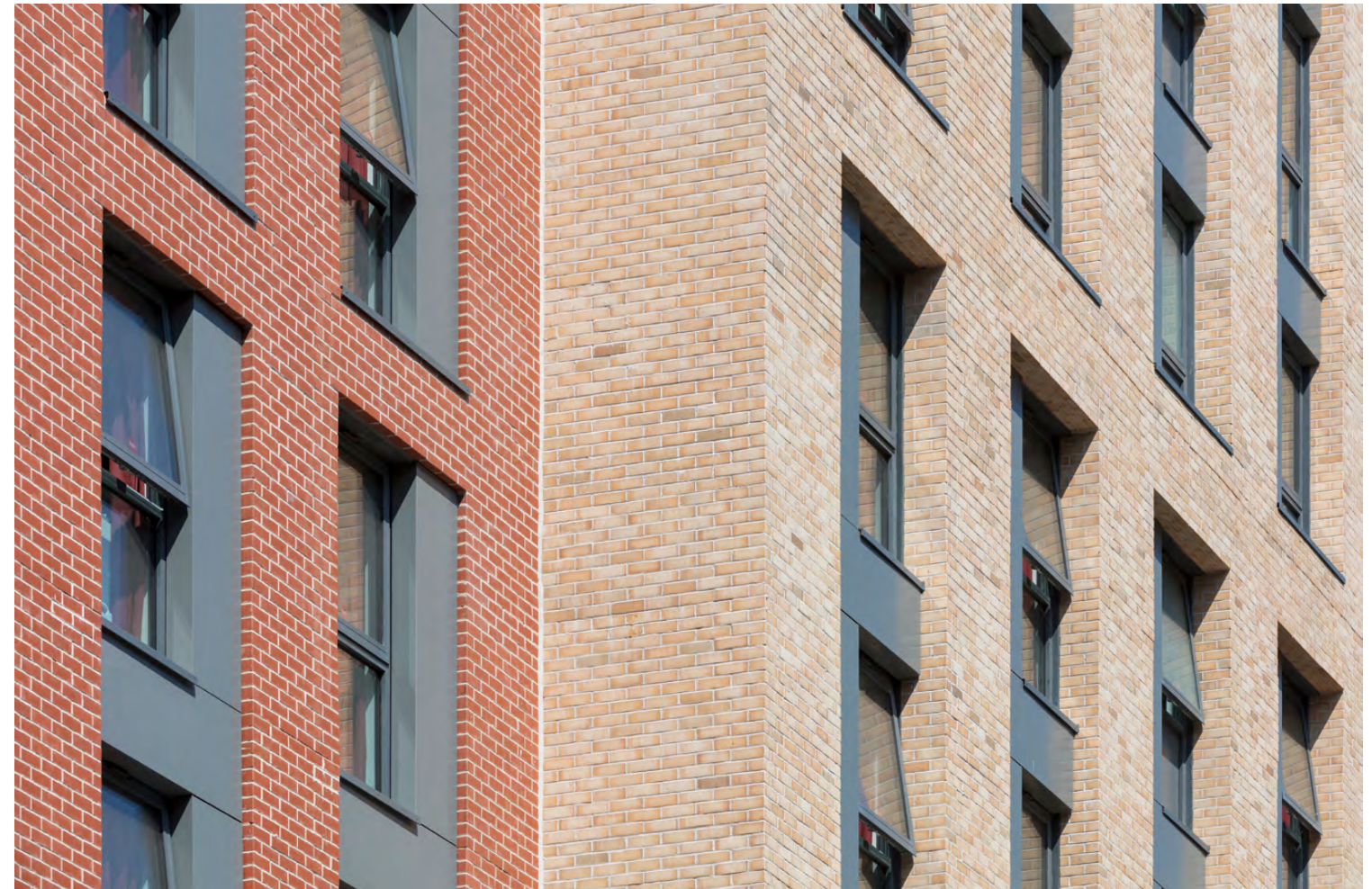
As a select company from Aquarian's Approved Installer Network, cladding specialist T&T Facades worked closely with Galliford Try to achieve deep window reveals and meet the approved planning drawings - innovatively designing and installing a bespoke support system for the cladding. "Gebrik's comparative ease of delivery, storage and installation

meant that challenging programme targets could be met," confirms T&T owner Tom Rutter. "It also made planning more straightforward, knowing that the product could be relied upon to replicate traditional brickwork while increasing productivity."

Aquarian's expert team worked closely to support the project through design and installation. Particular attention was given to the two separate build-ups, which included a 15mm drained cavity with timber battens and a larger cavity using helping hand brackets to achieve deep window reveals. As the building is over 18m it was also crucial that any approved details were in accordance with Gebrik's BR135 Assessment report.

"Aquarian delivered on their promises," says Tom Rutter. "When they said something would be delivered on a certain date - or something would be done, it was. And there was no slippage on the programme."

Now completed, Vincent's Walk is an impressive new landmark in the heart of Southampton's bustling city centre. It's proving to be a popular place in which to live and study - and is another success story for Aquarian and Gebrik.



"Aquarian delivered on their promises. When they said something would be delivered on a certain date, it was. And there was no slippage on the programme."

**TOM RUTTER**  
OWNER, T&T

[www.aquariancladding.co.uk](http://www.aquariancladding.co.uk)  
0044 (0)808 223 9080



**AQUARIAN**  
CLADDING SYSTEMS