

# A STYLISH & ROBUST REFURBISHMENT

A fraction of the time, cost and work of  
conventional construction methods

“Using Gebrik proved to be  
quieter, faster and less disruptive  
than conventional construction  
methods, which helped us  
maintain a much tidier and  
smaller site storage compound.”

**LEWIS ROGERS**  
SITE MANAGER OF RAYMOND BROWN

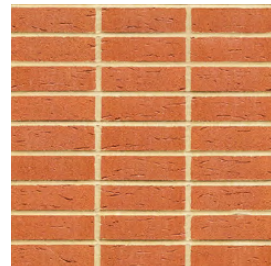




PROJECT NAME

HAMPSHIRE  
COUNTY COUNCIL  
SCHOOL REFURBISHMENT  
PROGRAMME

BRICK FINISH



FE40-44

CONTRACTOR

Raymond Brown

INSTALLER

Facade Concepts

ARCHITECT

HCC Property Services

CLIENT

Hampshire County Council

Greater efficiency, lower costs and improved learning environments were among the many benefits achieved by using our Gebrik system to refurbish Hampshire County Council's prefabricated school buildings. This major, ongoing project demanded swift build times, phased working and minimal disruption.

A growing demand for classroom space and a need for improved efficiency and lower costs have led Hampshire County Council to update many of its prefabricated school buildings. Using Gebrik from Aquarian to clad the existing frames has allowed for real enhancement of external aesthetics and internal space whilst reducing heating and maintenance costs.

The original buildings' large windows and inefficient wall construction meant heating and maintenance costs were rising. But the steel frame structures remained sound, allowing for a full refurbishment of the façade, increasing both efficiency and interior space.

Colin Burville, Technical Services Manager at Hampshire County Council explains: "Conventional cavity brickwork was not an option as we would have had to excavate and construct new foundations. So we opted for light-gauge steel infill panels with lightweight, insulating cladding systems to provide a quick, clean and cost-effective solution, removing extensive site works from the extremely tight build programmes."

To minimise the build cost and programme, the existing structural frame and foundations were retained, with stackbond Gebrik and render considered the best option for the cladding. The façade's external corners, door and window openings were framed with powder-coated aluminium flashings, providing a contemporary design which was quick and easy to install. One of the key benefits of Gebrik is that the slips

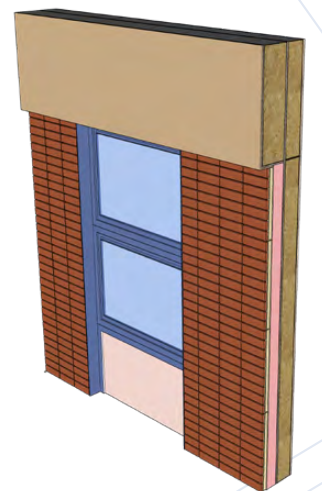
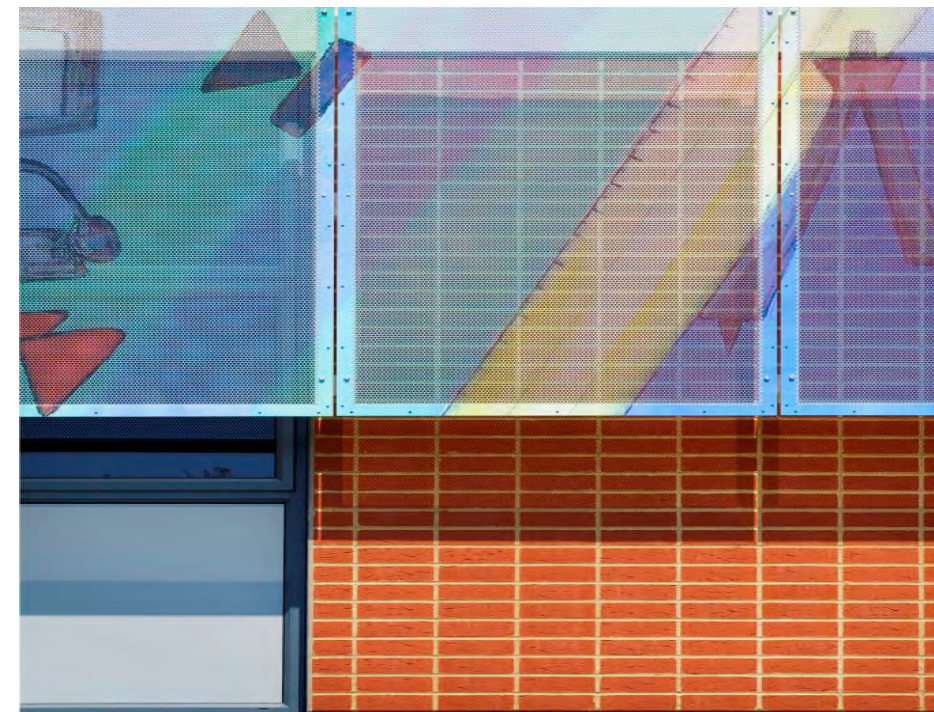
"We estimated a time reduction of 33 to 50% for Gebrik when compared with conventional masonry construction."

LEWIS ROGERS  
SITE MANAGER OF RAYMOND BROWN

are cast into the polyurethane panels at the factory, so as well as the lightweight, thermal and aesthetic improvements, the new classrooms are protected from the day to day school environment, requiring little or no long-term maintenance.

Raymond Brown's site manager, Lewis Rogers, was impressed: "The design solution proved to be quieter, faster and less disruptive. We estimated a time reduction of 33 to 50% for Gebrik when compared with conventional masonry construction, which enabled us to deliver a brick façade for a fraction of the time, cost and work involved, whilst providing a high quality, well-insulated and robust rain screen."

Over 30 such schemes have been completed by Hampshire council so far, delivering stylish revitalised buildings, a greatly improved learning environment and cost-savings for years to come.



**AQUARIAN**  
CLADDING SYSTEMS

[www.aquariancladding.co.uk](http://www.aquariancladding.co.uk)

0044 (0)808 223 9080