

REACHING NEW HEIGHTS



“This project has set the benchmark for our ‘Homes For Success’ initiative, with a ‘wow’ factor quality of finish.”

ANTONY ARNOLD,
CONSTRUCTION DIRECTOR OF UNITE STUDENTS

Lightweight materials and light-enhancing finishes deliver a beautiful building, on time and under budget



PROJECT NAME

ANGEL LANE, LONDON, E15

Designed by architects Hadfield Cawkwell Davidson for developer UNITE Students, this new-build student accommodation project in Stratford, East London presented a range of complex challenges for Aquarian, both in terms of design and delivery. But using a bespoke blend of Aquarian's Gebrik insulating brick cladding systems, the ground-breaking build was completed under budget and on time for the start of the academic year.

BRICK FINISH



RB10-20
& FE01-91 / FE71-91 / FE70-91

DEVELOPER

McAleer & Rushe

INSTALLER

Errigal Contracts

ARCHITECT

Hadfield Cawkwell Davidson

CLIENT

UNITE Students & King's
College, London

The Angel Lane project presented a range of challenges, including a delayed start due to late land purchase, a complex architectural specification and access over two A-roads and a live railway line.

Despite these challenges, the landmark 14-storey build went so well that in 2016 the CIOB Project Manager of the Year Award was won by the main contractor's Project Manager Paul Marlow, in part because of his adoption of Gebrik for the scheme. It was also shortlisted for Construction News 'Project of the Year £10M-30M' award.

The entire building, comprising 759 student bedrooms, as well as commercial space, storage and communal areas around an open courtyard, was built in 18 months, with Gebrik installation taking around 7 months to complete. A bespoke blend of Gebrik was installed at a rate of approx. 1000m² per month, taking brickwork off the critical path and helping ensure that the completed building was delivered under budget and on schedule.

Having switched from a post-tensioned concrete frame to reinforced in situ, the critical benefit of using Gebrik for Paul and his team was that it eliminated the extensive tower-crane hook time required by a precast solution as it could be installed from scaffold, mast climbers and cradles.

The triangular site was flanked on two sides by the busy A112 & A118 and DLR & Overground railway line, meaning access was severely restricted but with

approx. 600m² of brick cladding per load, Gebrik's efficient load size reduced the number of deliveries to site by 75% compared with brickwork.

Dominic Trainor, Contracts Director of main contractor McAleer & Rushe, was more than satisfied. "Having thoroughly researched our options, we concluded that Gebrik was an ideal alternative to brickwork, enabling us to meet the requirements of the architect's design despite our initial two month delay to our start date - which was critical to our client as the completion date had to fall in with the start of the academic year. This ground-breaking project was the first time that we had used Gebrik on a project of this scale, so it was essential that Aquarian Cladding was an integral part of the team. Their cooperation ensured that our demanding requirements were met to achieve a stunning building that was delivered on time and on budget."

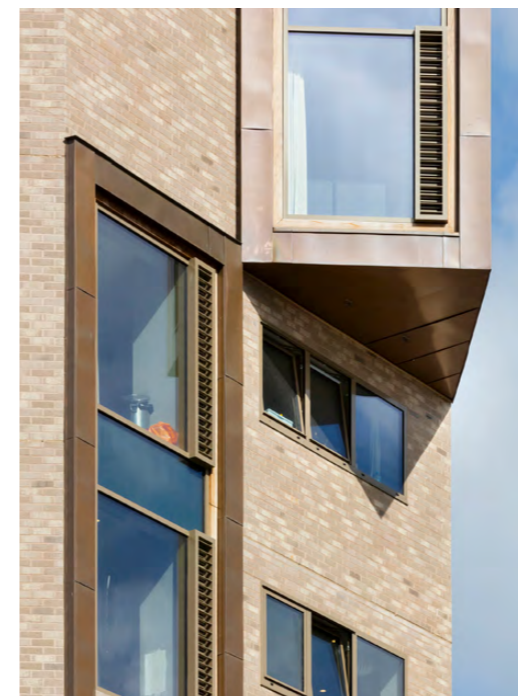
Aquarian was well equipped to ensure the architect's design specifications were realised, sourcing a bright yellow brick finish to create the desired light reflection within the courtyard, whilst the multi-coloured grey finish used elsewhere was factory-blended from three different finishes. Corners were prefabricated to produce non-standard angles, with some finished in contrasting colours to suit the changing façade colour where elevations met.

Gebrik's light weight meant cost savings for the contractor, reducing the



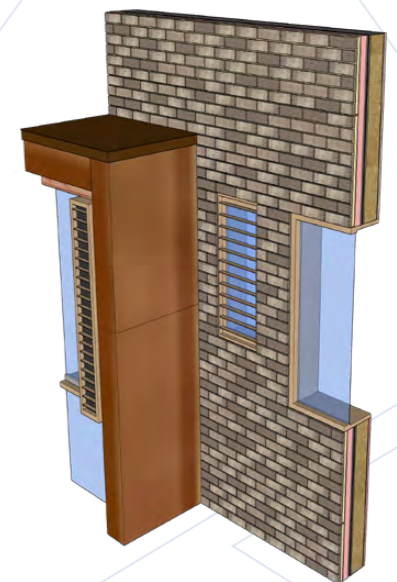
"Aquarian ensured that our demanding requirements were met to achieve a stunning building that was delivered on time and on budget."

DOMINIC TRAINOR
CONTRACTS DIRECTOR
OF MCALEER & RUSHE



structural support required over the building from around 200kg/m² of brickwork to around 50kg/m² of Gebrik. In addition to lower scaffold and structural support costs, Gebrik also contributed to a reduction in prelim costs, thanks to its impressive speed of installation.

The scheme was also a first for cladding specialist Errigal Contracts. After extensive training and regular site visits from Aquarian, Managing Director Damien Treanor said "Aquarian's technical support and professional approach right from initial concept, through detailed design and post installation inspections aided us in delivery of a highly challenging build. The working relationships established and the high standard of finish achieved on this scheme has led to further opportunities to work together with Aquarian."



www.aquariancladding.co.uk
0044 (0)808 223 9080

