

MORTAR (APPLIED TO WHOLE SYSTEM, AFTER FIXING TO SUBSTRATE)

MIN 10MM SHEATHING BOARD

MIN 12MM CEMENT PARTICLE BOARD OR MIN 15MM PLY/OSB BOARD

INSULATION CHAMBER

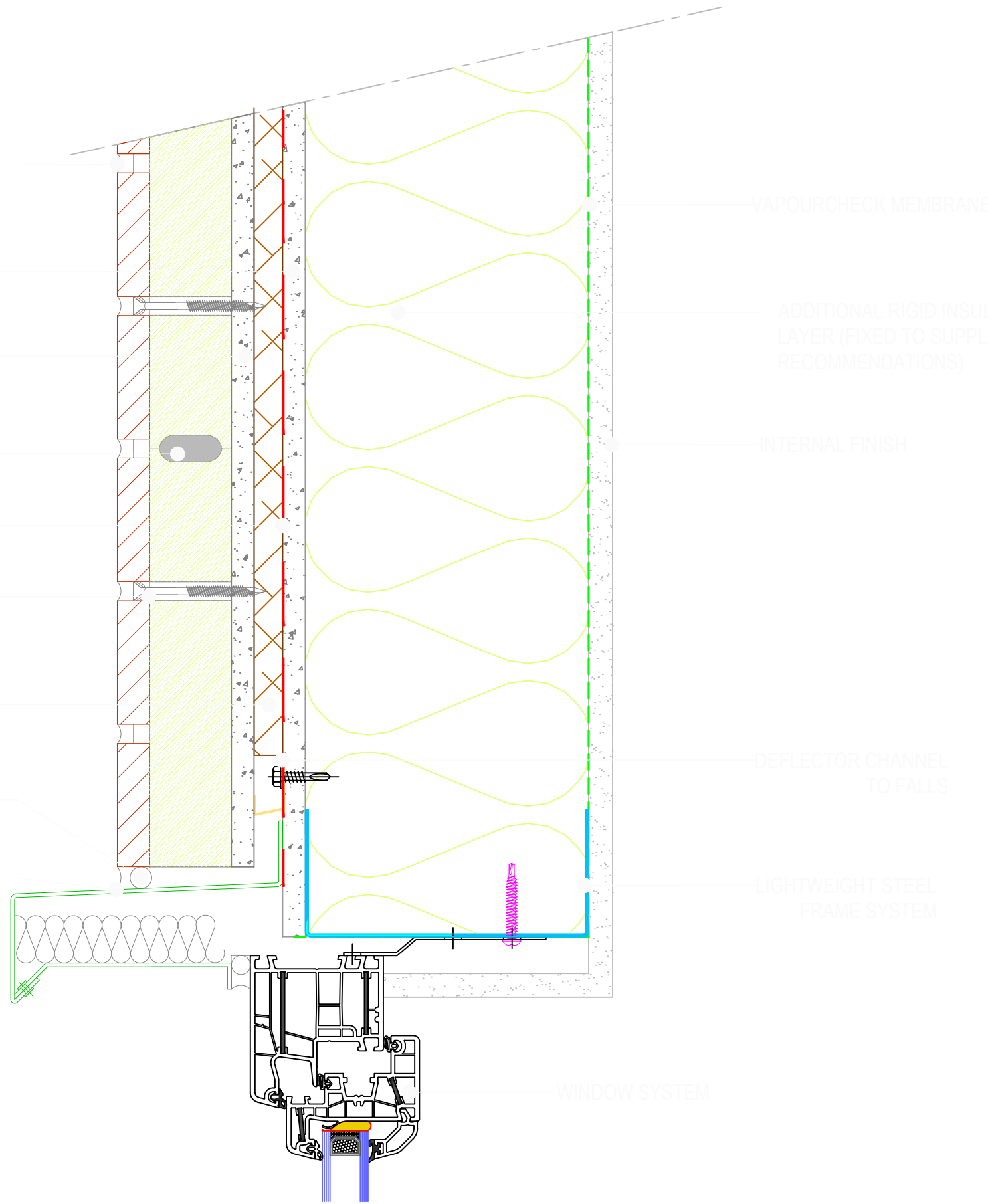
EPDM DRESSED & BONDED FROM THE WINDOW UNIT

GEBRIK SCREWS & PLUGS (VARIABLE LENGTH & TYPE TO SUIT SUBSTRATE)

15MM TIMBER BATTEN TO CREATE 15MM DRAINAGE CAVITY

10MM COMPRIBAND COMPRESSIBLE SEALANT

10MM FLEXIBLE SEALANT



VAPOURCHECK MEMBRANE

ADDITIONAL RIGID INSULATION LAYER (FIXED TO SUPPLIERS RECOMMENDATIONS)

INTERNAL FINISH

DEFLECTOR CHANNEL TO FALLS

LIGHTWEIGHT STEEL FRAME SYSTEM

WINDOW SYSTEM

COPYRIGHT NOTICE:
 THIS DRAWING AND ITS CONTENT IS COPYRIGHT OF
 AQUARIAN CLADDING SYSTEMS LTD.
 ALL RIGHTS RESERVED
 ANY REDISTRIBUTION OR REPRODUCTION OF PART OR
 ALL OF THE CONTENTS IN ANY FORM IS PROHIBITED AND
 YOU MAY NOT, EXCEPT WITH OUR EXPRESS WRITTEN ,
 DISTRIBUTE OR COMMERCIALY EXPLOIT THE
 CONTENT.PERMISSION

NOTES:
 ALL DRAWN ELEMENTS OTHER THAN THOSE ELEMENTS
 DIRECTLY RELATING TO THE GEBRIK PANEL AND/OR
 FIXINGS (INCLUDING DIMENSIONS) ARE SHOWN AS
 INDICATIVE AND ARE NOT TO BE USED FOR
 CONSTRUCTION DETAILING PURPOSES.

REV:	DESCRIPTION:	BY:	DATE:
STATUS:			

AQUARIAN
 CLADDING SYSTEMS
 Eversea Business Centre
 13 Gardens Road, Clevedon
 North Somerset, BS21 7QQ
 0844 334 0077
 www.aquariancladding.co.uk

CLIENT:

SITE:
 N/A
 N/A

TITLE:
 GEBRIK ONTO SFS WITH CAVITY:
 FLASHING HEAD DETAIL

SCALE AT A3: NTS	DATE: 18/11/2016	DRAWN: CG	CHECKED: PR
PROJECT NO: N/A	DRAWING NO: AQ/FHD/001	REVISION: 0	