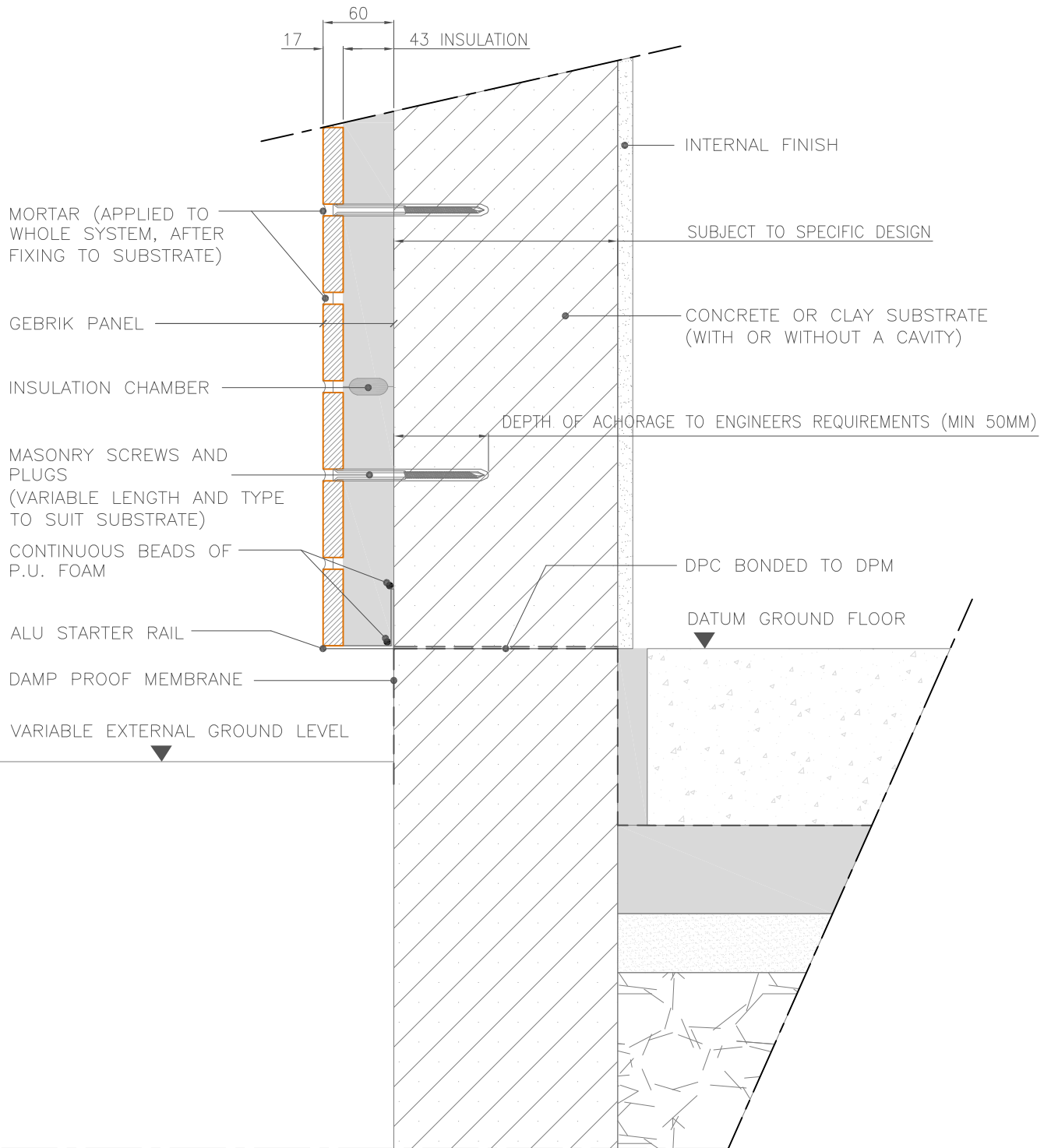


ALL DRAWN ELEMENTS OTHER THAN THOSE ELEMENTS DIRECTLY RELATING TO THE GEBRIK PANEL AND/OR FIXINGS (INCLUDING DIMENSIONS) ARE SHOWN AS INDICATIVE AND ARE NOT TO BE USED FOR CONSTRUCTION DETAILING PURPOSES.



DRAWING REFERENCE:
AQ/BL/GD001

SCALE: 1:5 @A4

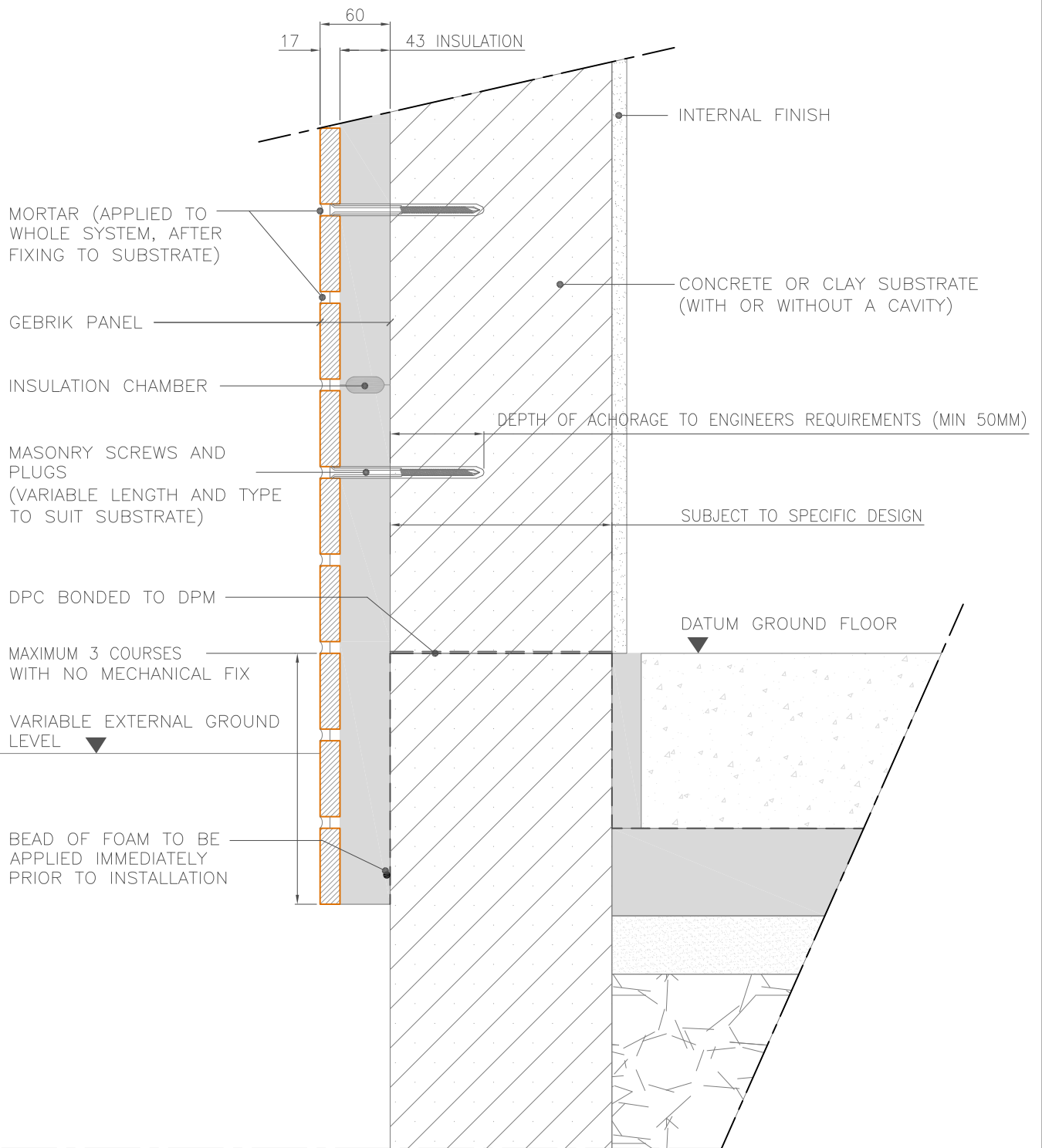
GEBRIK ONTO MASONRY
SUBSTRATE: GROUND DETAIL
ABOVE GROUND



Aquarian Cladding Systems Ltd
Lower Ground Floor
14 Marine Parade
Clevedon
BS21 7QS

Tel/fax (office) : 01275 543812
Email : info@aquariancladding.co.uk
www.aquariancladding.co.uk

ALL DRAWN ELEMENTS OTHER THAN THOSE ELEMENTS DIRECTLY RELATING TO THE GEBRIK PANEL AND/OR FIXINGS (INCLUDING DIMENSIONS) ARE SHOWN AS INDICATIVE AND ARE NOT TO BE USED FOR CONSTRUCTION DETAILING PURPOSES.



DRAWING REFERENCE:
AQ/BL/GD002

SCALE: 1:5 @A4

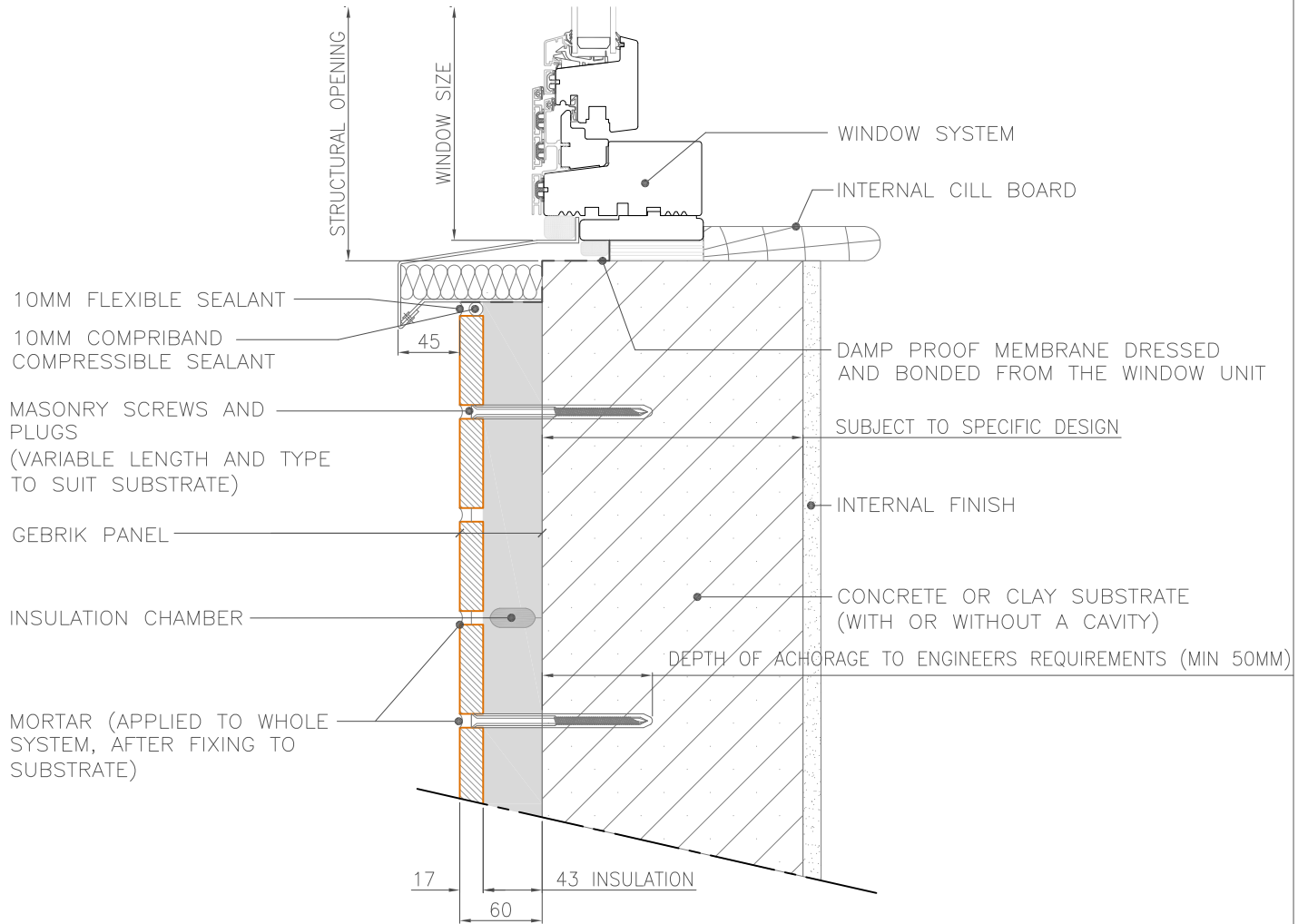
GEBRIK ONTO MASONRY
SUBSTRATE: GROUND DETAIL
BELOW GROUND



Aquarian Cladding Systems Ltd
Lower Ground Floor
14 Marine Parade
Clevedon
BS21 7QS

Tel/fax (office) : 01275 543812
Email : info@aquariancladding.co.uk
www.aquariancladding.co.uk

ALL DRAWN ELEMENTS OTHER THAN THOSE ELEMENTS DIRECTLY RELATING TO THE GEBRIK PANEL AND/OR FIXINGS (INCLUDING DIMENSIONS) ARE SHOWN AS INDICATIVE AND ARE NOT TO BE USED FOR CONSTRUCTION DETAILING PURPOSES.



DRAWING REFERENCE:
AQ/BL/CD001

SCALE: 1:5 @A4

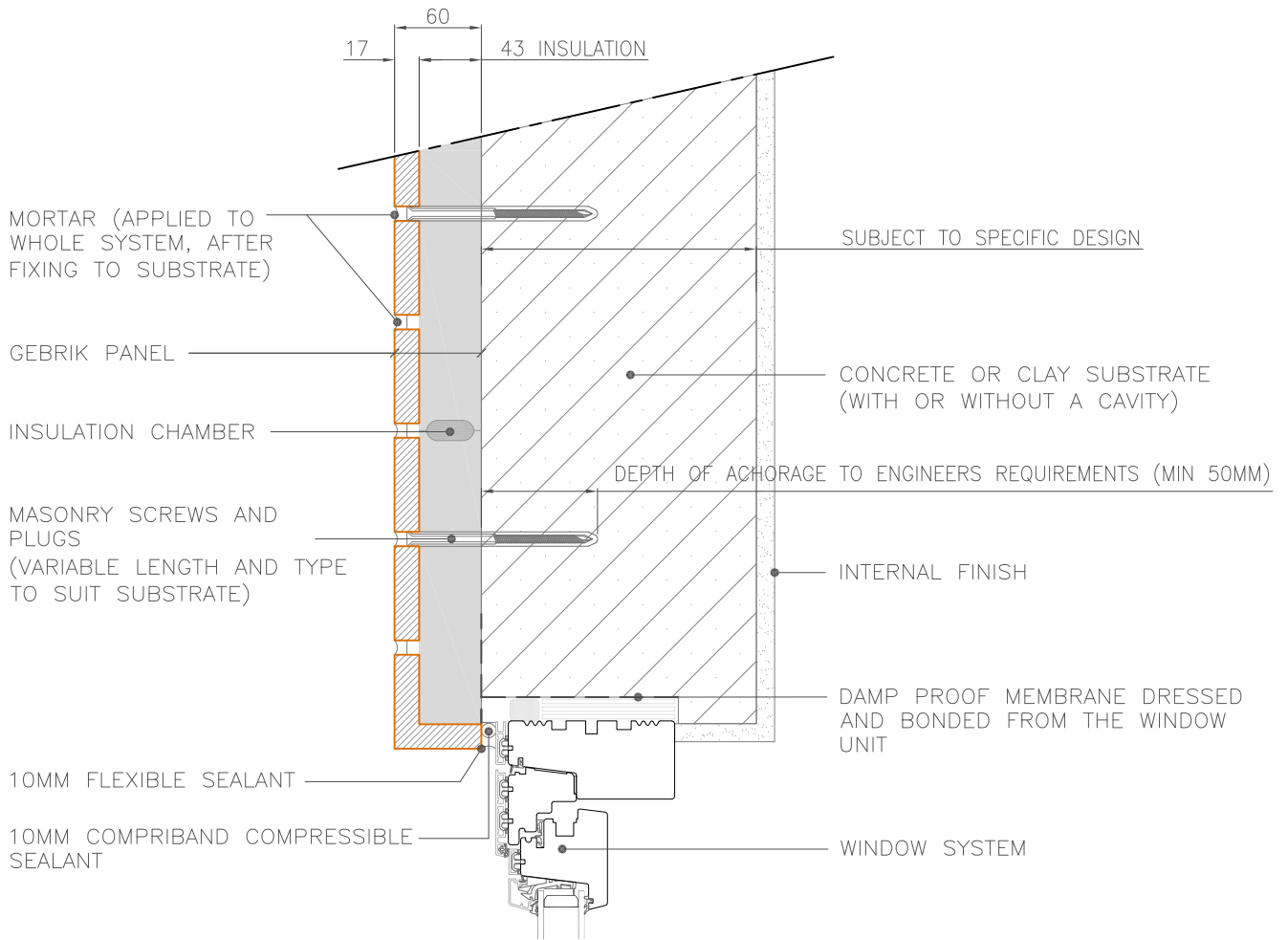
GEBRIK ONTO MASONRY
SUBSTRATE: CILL DETAIL



Aquarian Cladding Systems Ltd
Lower Ground Floor
14 Marine Parade
Clevedon
BS21 7QS

Tel/fax (office) : 01275 543812
Email : info@aquariancladding.co.uk
www.aquariancladding.co.uk

ALL DRAWN ELEMENTS OTHER THAN THOSE ELEMENTS DIRECTLY RELATING TO THE GEBRIK PANEL AND/OR FIXINGS (INCLUDING DIMENSIONS) ARE SHOWN AS INDICATIVE AND ARE NOT TO BE USED FOR CONSTRUCTION DETAILING PURPOSES.



DRAWING REFERENCE:
AQ/BL/HD001

SCALE: 1:5 @A4

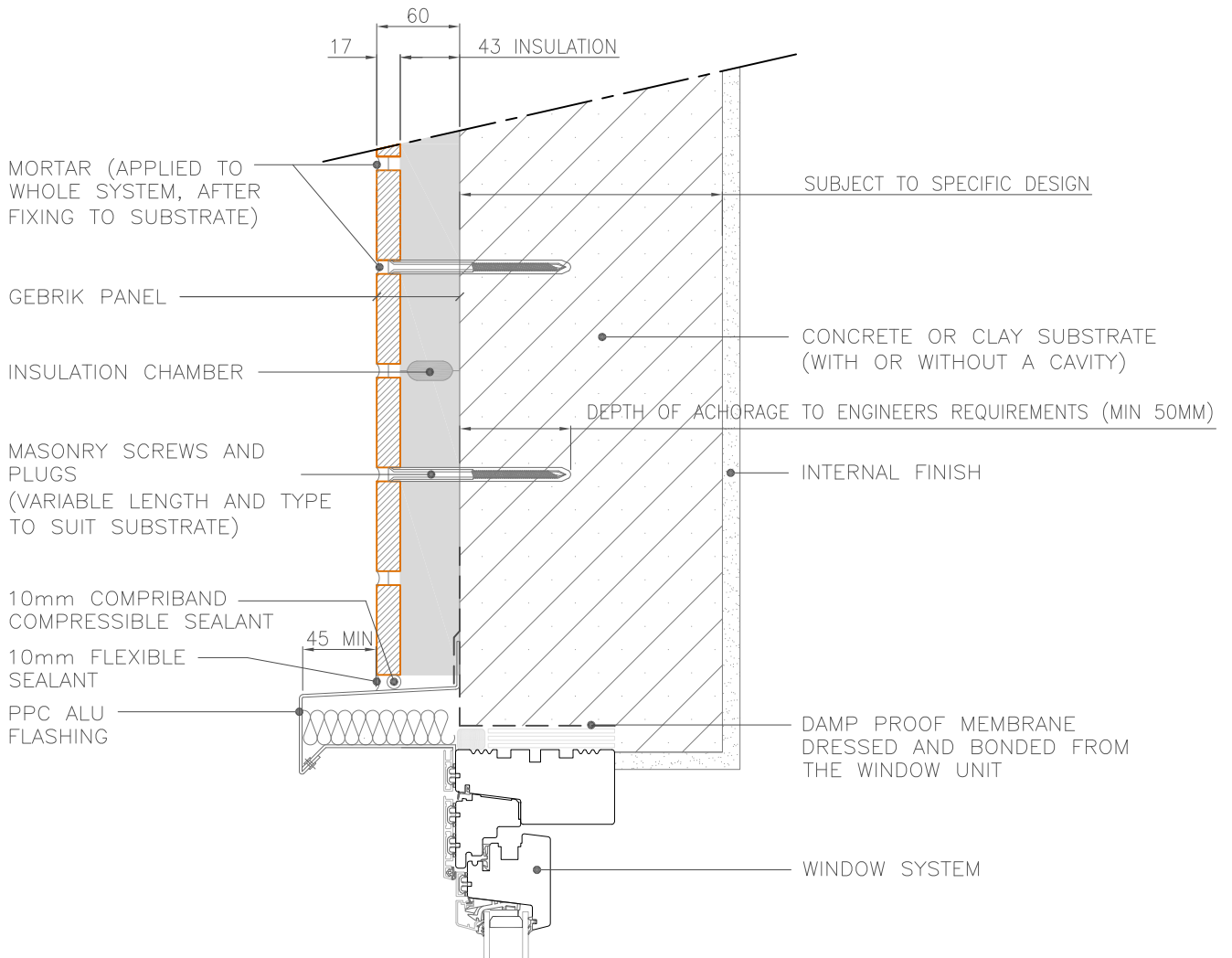
GEBRIK ONTO MASONRY
SUBSTRATE: HEAD DETAIL BRICK
RETURN



Aquarian Cladding Systems Ltd
Lower Ground Floor
14 Marine Parade
Clevedon
BS21 7QS

Tel/fax (office) : 01275 543812
Email : info@aquariancladding.co.uk
www.aquariancladding.co.uk

ALL DRAWN ELEMENTS OTHER THAN THOSE ELEMENTS DIRECTLY RELATING TO THE GEBRIK PANEL AND/OR FIXINGS (INCLUDING DIMENSIONS) ARE SHOWN AS INDICATIVE AND ARE NOT TO BE USED FOR CONSTRUCTION DETAILING PURPOSES.



DRAWING REFERENCE:
AQ/BL/HD002

SCALE: 1:5 @A4

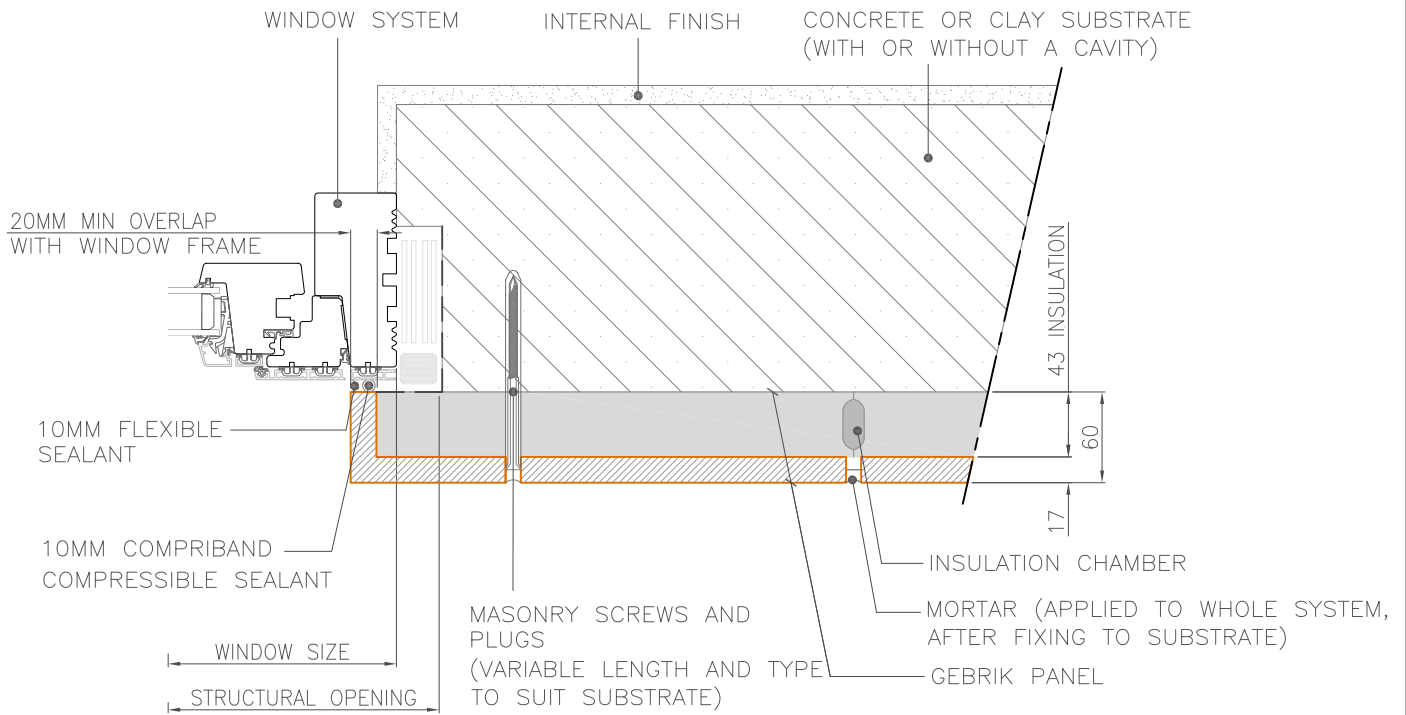
GEBRIK ONTO MASONRY
SUBSTRATE: HEAD DETAIL
FLASHING RETURN



Aquarian Cladding Systems Ltd
Lower Ground Floor
14 Marine Parade
Clevedon
BS21 7QS

Tel/fax (office) : 01275 543812
Email : info@aquariancladding.co.uk
www.aquariancladding.co.uk

ALL DRAWN ELEMENTS OTHER THAN THOSE ELEMENTS DIRECTLY RELATING TO THE GEBRIK PANEL AND/OR FIXINGS (INCLUDING DIMENSIONS) ARE SHOWN AS INDICATIVE AND ARE NOT TO BE USED FOR CONSTRUCTION DETAILING PURPOSES.



DRAWING REFERENCE:
AQ/BL/JD001

SCALE: 1:5 @A4

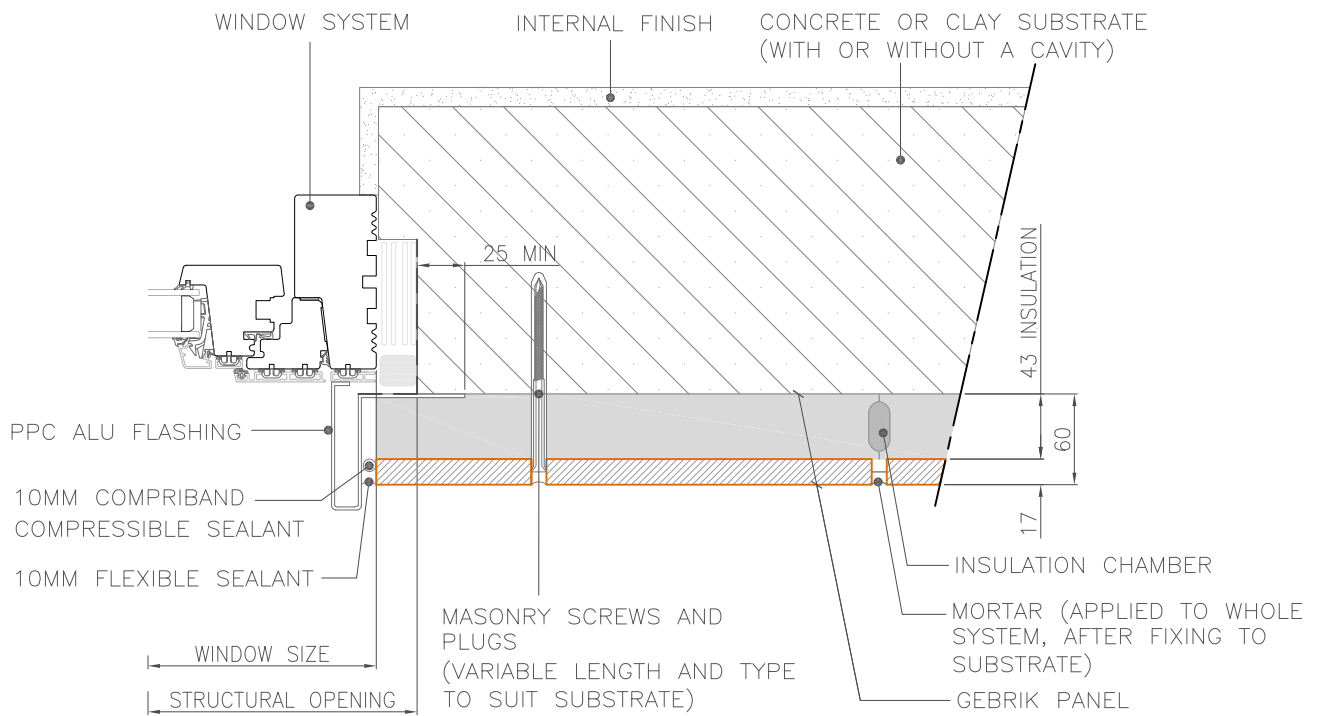
GEBRIK ONTO MASONRY
SUBSTRATE: JAMB DETAIL



Aquarian Cladding Systems Ltd
Lower Ground Floor
14 Marine Parade
Clevedon
BS21 7QS

Tel/fax (office) : 01275 543812
Email : info@aquariancladding.co.uk
www.aquariancladding.co.uk

ALL DRAWN ELEMENTS OTHER THAN THOSE ELEMENTS DIRECTLY RELATING TO THE GEBRIK PANEL AND/OR FIXINGS (INCLUDING DIMENSIONS) ARE SHOWN AS INDICATIVE AND ARE NOT TO BE USED FOR CONSTRUCTION DETAILING PURPOSES.



DRAWING REFERENCE:
AQ/BL/JD003

SCALE: 1:5 @A4

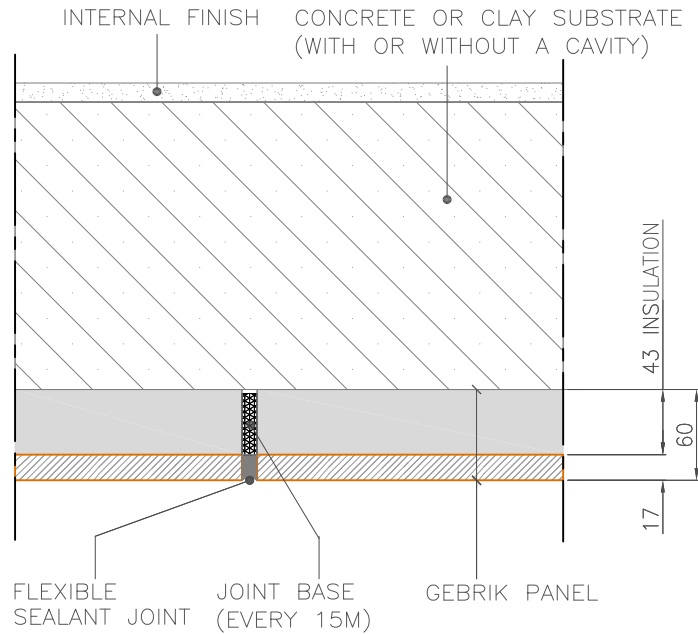
GEBRIK ONTO MASONRY
SUBSTRATE: JAMB DETAIL
FLASHING RETURN



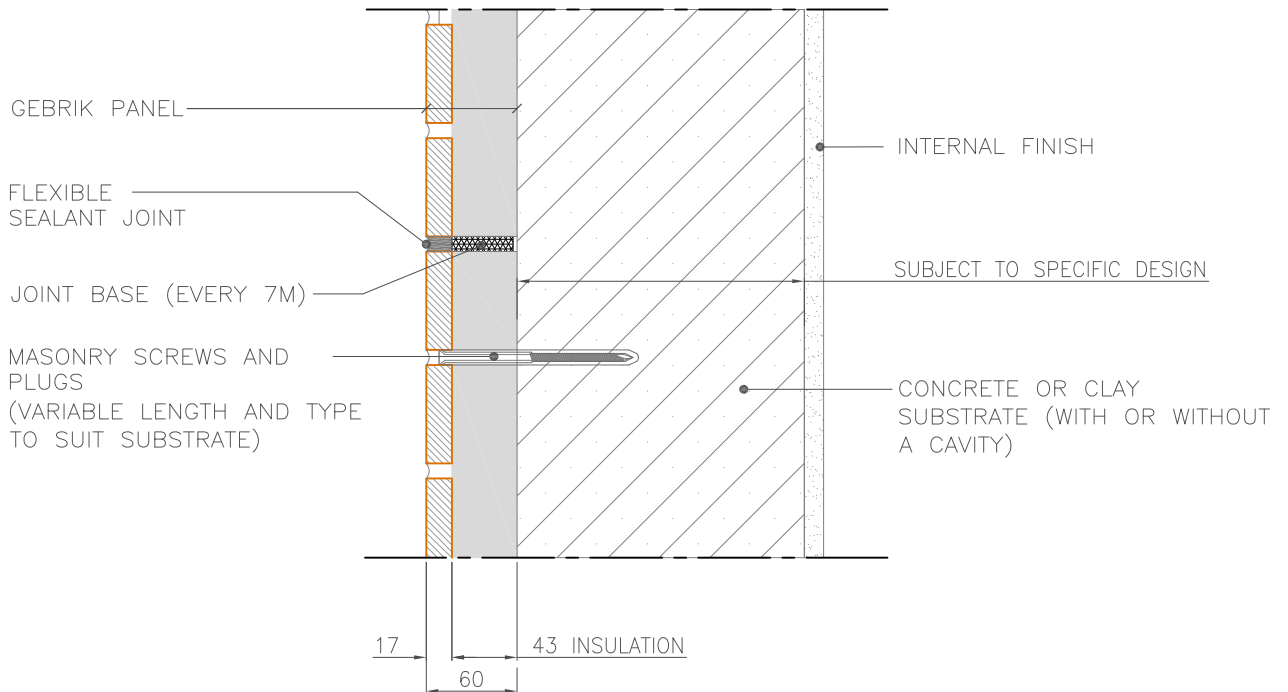
Aquarian Cladding Systems Ltd
Lower Ground Floor
14 Marine Parade
Clevedon
BS21 7QS

Tel/fax (office) : 01275 543812
Email : info@aquariancladding.co.uk
www.aquariancladding.co.uk

ALL DRAWN ELEMENTS OTHER THAN THOSE ELEMENTS DIRECTLY RELATING TO THE GEBRIK PANEL AND/OR FIXINGS (INCLUDING DIMENSIONS) ARE SHOWN AS INDICATIVE AND ARE NOT TO BE USED FOR CONSTRUCTION DETAILING PURPOSES.



PLAN: VERTICAL JOINT



SECTION: HORIZONTAL JOINT



DRAWING REFERENCE:
AQ/BL/MOV001/2

SCALE: 1:5 @A4

GEBRIK ONTO MASONRY
SUBSTRATE: MOVEMENT JOINT
DETAILS



Aquarian Cladding Systems Ltd
Lower Ground Floor
14 Marine Parade
Clevedon
BS21 7QS

Tel/fax (office) : 01275 543812
Email : info@aquariancladding.co.uk
www.aquariancladding.co.uk